



Encampment Cleanup Update

387.86 Tons Removed Feb 1 – Apr 30

Environmental Creek Cleanup Committee

May 17, 2024

Cherry Avenue Emergency Interim Housing Update

- Valley Water and City of San José are negotiating development of Emergency Interim Housing
- Location: Valley Water property on Guadalupe River Reach 12, near Cherry Avenue
- City of San José will provide a progress update



Encampment Cleanup Schedule

2/1 – 2/9

- Enhanced Cleanup: Los Gatos Creek (behind Timber Cove), Private Property Owner Abatement: Los Gatos Creek (behind Sofi Apartments)
- Trash Hot Spots: Llagas Watershed
- Enhanced Cleanup: Guadalupe River - West Alma Avenue to West Virginia Street
- Enhanced Cleanup: Guadalupe Creek – Almaden Expressway to Camden Avenue

2/12 – 2/23

- Enhanced Cleanup: Guadalupe River - Blossom Hill Road to Branham Lane
- Enhanced Cleanup: Calabazas Creek - El Camino Real to D/S Cabrillo Avenue
- Trash
- Enhanced Cleanup: Coyote Creek - Montague Expressway to McCarthy Boulevard
- Enhanced Cleanup: Upper Penitencia Creek – Jackson Avenue to Capitol Expressway
- Trash Hot Spots: Guadalupe Watershed
- Hot Spots: West Valley Watershed

2/26 – 3/8

- Enhanced Cleanup: Los Gatos Creek - Bascom Avenue to Meridian Avenue
- Enhanced Cleanup: Los Gatos Creek - San Carlos Street to Santa Clara Street
- Enhanced Cleanup: Guadalupe River - West Santa Clara Street to Coleman Avenue
- Enhanced Cleanup: Calabazas Creek - El Camino Real to D/S Cabrillo Avenue
- Abatement due to extreme rating on risk assessment: Lower Silver Creek - San Antonio Abatement

3/11 – 3/29

- Mitigation Site Abatement: Guadalupe River – U/S Blossom Hill Road
- Enhanced Cleanup: Thompson Creek – Quimby Road to Keaton Loop
- CSJ Abatement for public safety: Los Gatos Creek - West San Fernando Street
- Enhanced Cleanup: West Branch Llagas – Monterey Road to Llagas Creek Confluence
- Enhanced Cleanup: Los Gatos Creek- San Carlos Street to Santa Clara Street
- Enhanced Cleanup: Los Gatos Creek - Lonus Street to Auzerais Avenue

Encampment Cleanup Schedule

3/25 – 4/3

- Enhanced Cleanup: Thompson Creek - Quimby Road to Keaton Loop
- Enhanced Cleanup: Guadalupe Creek - Almaden Expressway to Coleman Avenue
- Enhanced Cleanup: Guadalupe River - Branham Lane to Almaden Expressway

4/4 – 4/16

- Enhanced Clean Up: Calabazas Creek - El Camino Real to D/S Cabrillo Avenue
- Enhanced Cleanup : Saratoga Creek - Lawrence Expressway to Benton Street
- Trash Hot Spots: Calabazas Creek
- Enhanced Cleanup: Los Gatos Creek – Bascom Avenue to Meridian Avenue
- Enhanced Cleanup: Guadalupe River - West Alma Avenue to West Virginia Street

4/17 – 4/23

- Enhanced Cleanup: Upper Penitencia Creek – Jackson Avenue to Capitol Expressway
- Abatements due to Risk: Coyote Creek near San Jose Highschool, Sunnyvale East Channel @ Tasman Ave
- Enhanced Cleanup: Coyote Creek – Capitol Expressway to Tully Road
- Enhanced Cleanup: Thompson Creek – Quimby Road to Keaton Loop

4/24 – 4/30

- Enhanced Cleanup: Thompson Creek – Quimby Road to Keaton Loop
- CSJ Joint Abatement for trail safety: Los Gatos Creek – Lonus Street to Auzerais Avenue

Encampment Cleanup Costs & Funding

	FY20	FY21	FY22	FY23	FY24 (As of 5/3/24)
Encampment Cleanup Budget	\$1,515,073	\$922,107	\$1,923,736	\$2,406,885	\$4,129,753
Encampment Cleanup Expenditures	\$845,455	\$364,895	\$2,218,126	\$2,430,071	\$2,962,590
Encampment Cleanup Budget Remaining	\$669,618	\$557,212	(\$294,390.00)	(\$23,186.00)	\$1,167,162
Encampment Cleanup Budget Expended	56%	40%	115%	101%	72%

Encampment Cleanup Cost Breakdown

Encampment Cleanup Cost Categories	FY20	FY21	FY22	FY23	FY24 (As of 5/3/24)
Internal Labor <i>(Salaries, benefits, and overhead)</i>	\$504,411	\$153,523	\$1,321,519	\$1,428,700	\$1,358,431
Skilled Contract Labor	\$321,131	\$131,368	\$810,216	\$850,515	\$751,044
SCC Outreach Services	N/A	N/A	N/A	N/A	\$13,000
Portable Toilet Facilities Program	N/A	N/A	N/A	N/A	\$70,624
SJPD Secondary Employment	N/A	\$3,743	\$10,675	\$77,595	\$134,890
SJPD Stream Stewardship Law Enforcement (SSLE)* <i>*FY20-23 SSLE expenditures of \$524,160.21 were charged to SCW Priority B projects rather than Encampment Cleanup</i>	N/A	N/A	N/A	N/A	\$209,000
Trash Disposal	\$10,699	\$6,566	\$42,525	\$25,115	\$57,180
Lease & Rental Equipment	\$1,829	\$10,148	\$11,711	\$10,699	\$12,664
Other Costs <i>(General construction materials, operating supplies, safety supplies, minor equipment, small tools, fuel, chemicals, etc.)</i>	\$7,350	\$59,548	\$19,650	\$37,446	\$37,756
Encumbered Agreement Amounts	N/A	N/A	N/A	N/A	\$318,000
Totals	\$845,419	\$364,896	\$2,216,297	\$2,430,070	\$2,962,590

Trash & Debris Impacts on Waterways

Encampment/Trash and Debris Cleanup Efforts

CY = cubic yards of trash, debris, and hazardous pollutants removed from waterways

Budget Year	SCW Project F5		SCW Project F6		SCW Priority B Projects
	Encampment Cleanup (CY)	Encampment Cleanup Cost	Litter Removal (CY)	Litter Removal Cost	Trash accumulation point mapping & removal, Trash Booms, Hot Spots, & Volunteer Cleanup Efforts (CY)
FY 2013-14	9,982	\$ 786,085	1,174	\$ 130,881	450
FY 2014-15	17,024	\$ 1,341,166	1,793	\$ 189,675	420
FY 2015-16	11,746	\$ 929,727	1,589	\$ 198,269	615
FY 2016-17	12,698	\$ 1,018,873	1,148	\$ 144,733	478
FY 2017-18	16,923	\$ 1,485,693	1,704	\$ 219,078	731
FY 2018-19	11,480	\$ 968,819	1,045	\$ 512,487	637
FY 2019-20	9,536	\$ 845,455	1,219	\$ 639,570	295
FY 2020-21	1,523	\$ 364,896	2,347	\$ 864,082	706
FY 2021-22	12,158	\$ 2,216,292	1,009	\$ 605,620	649
FY 2022-23	11,161	\$ 2,430,070	1,172	\$ 532,918	1,005
FY 2023-24 (As of 5/3/24)	12,330	\$ 2,962,590	824	\$ 268,725	194
Estimated Totals	126,561	\$ 15,349,666	15,024	\$ 4,306,038	6,179

Valley Water Encampment Management

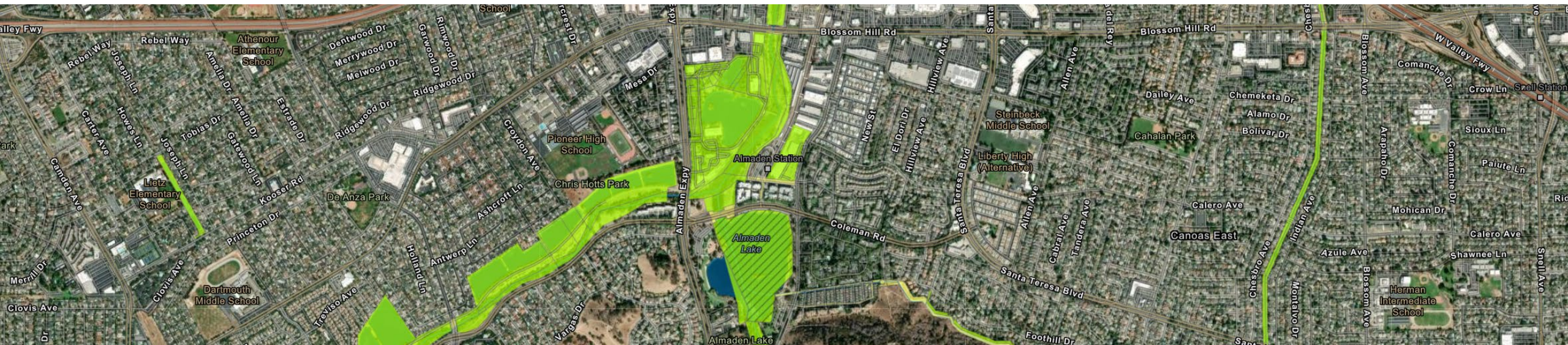
Property Owner Responsibilities

- Valley Water owns or has access to maintain approximately **295** miles of the **800** miles of the creeks and rivers in Santa Clara County.
- The remainder is owned by Santa Clara County, private entities, cities in which the creeks are located, and other public agencies.
- Valley Water performs encampment management activities only on the property where it has built flood protection projects and possesses land rights, including sections of Valley Water right-of-way.
- Management of encampments on land owned by other entities is the responsibility of those entities.

Valley Water Encampment Management Property Ownership Map

- This link provides a map showing Valley Water land ownership:

<https://gis.valleywater.org/FeeEasement/>



Guadalupe River – Downstream Willow Street



Before



After

Accomplishments:

- 8.01 Tons Removed
- 25.83 Acres Managed

Los Gatos Creek - Downstream Bascom Avenue



Before



After

Accomplishments:

- 17.26 Tons Removed
- 24.49 Acres Managed

Lower Silver Creek – King Road



Before



After

Accomplishments:

- 21.29 Tons Removed
- 5.00 Acres Managed

Fence Repairs

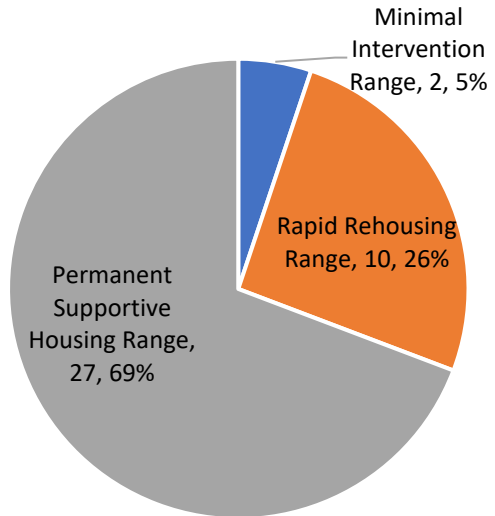


- Fence repairs completed by Watersheds Operations and Maintenance staff.
- Fence repair requests responded to within 1 business day.
- Work completed on average of 5 business days.
- 1,366 LF of Standard Chain-Link fence installed.
- 968 LF of Expanded Metal fence installed.

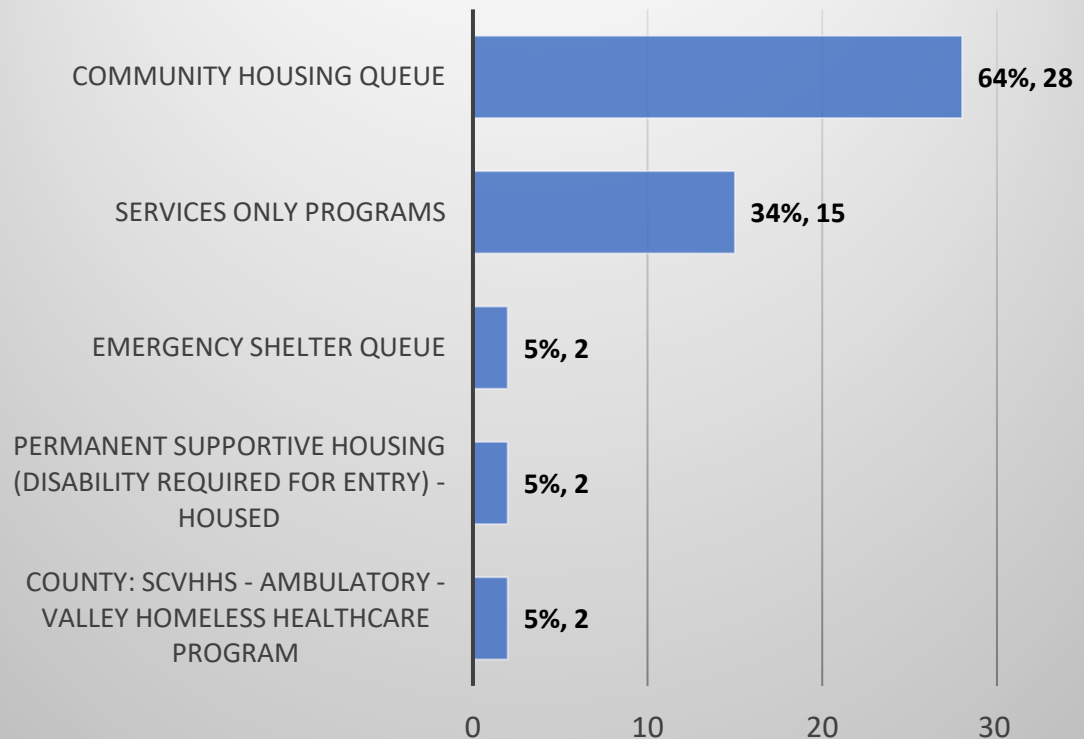
Valley Water Outreach Report– April 2024

- The following show characteristics for 44 households (47 individuals) currently enrolled in Community Hotline - Hotline Outreach (Valley Water OSH)
 - Enrollments are from August 2023 to March 2024
 - No clients have exited from the program yet
- 39 households have taken a VI-SPDAT assessment with 10 (26%) scoring in the Rapid Rehousing level of need and 27 (69%) scoring in the Permanent Supportive Housing level of need (based on their most recent VI-SPDAT assessment).
- 28 households are currently on the Community Housing Queue waiting for a housing opportunity.
- 2 households are currently enrolled and housed in a Permanent Supportive Housing program (housed in February and March 2024)
- 19 households were enrolled in an Emergency Shelter at some point, but none are actively enrolled as of April 19, 2024.

By VI-SPDAT Level of Intervention

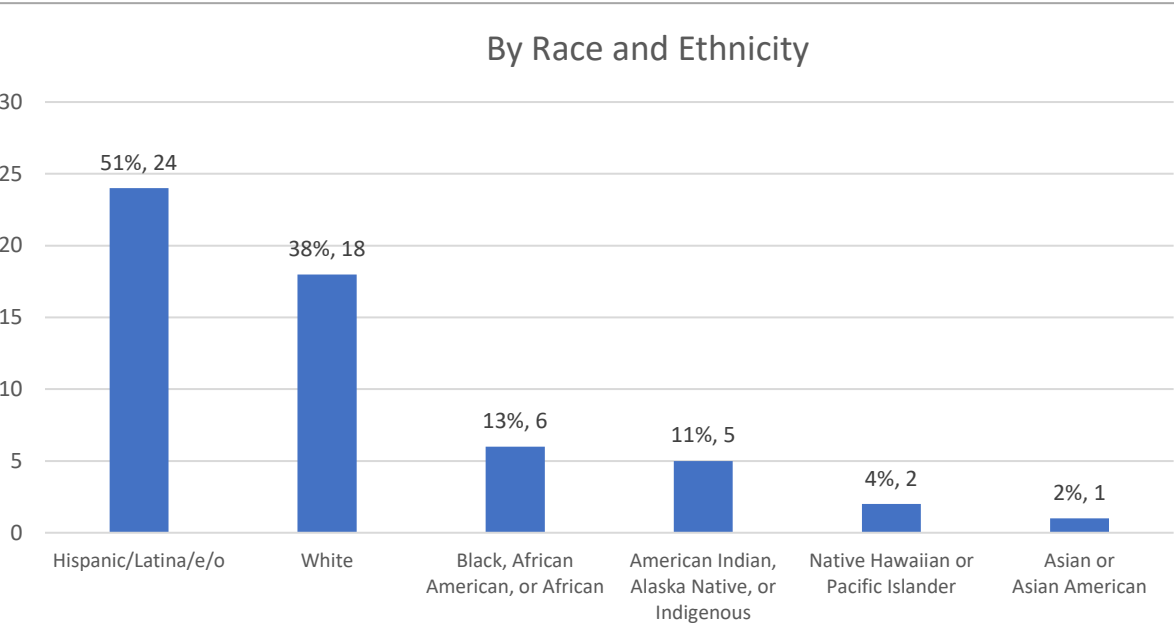
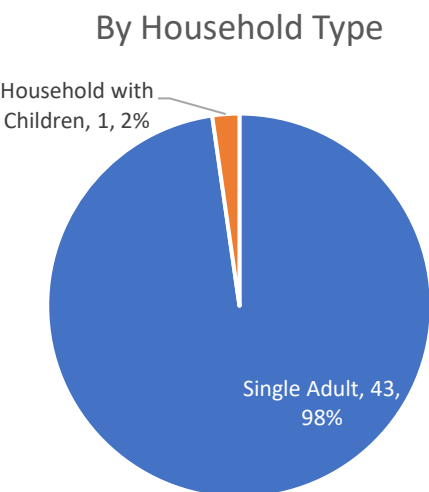
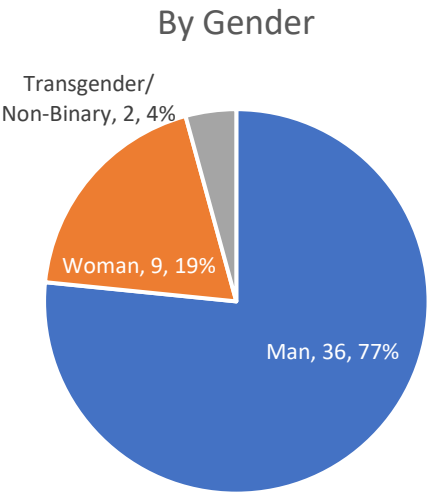
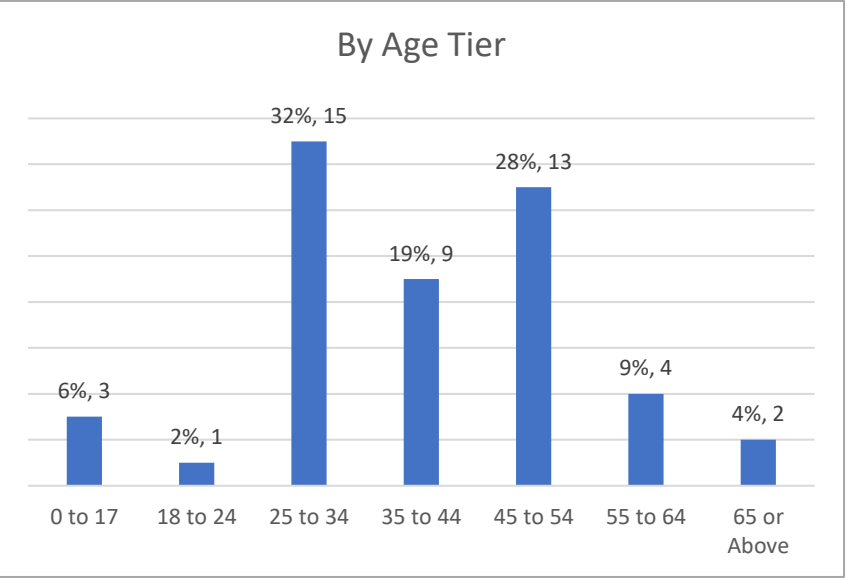


Valley Water Outreach Households Active on Community Queues or HMIS Programs (as of 4/19/2024)

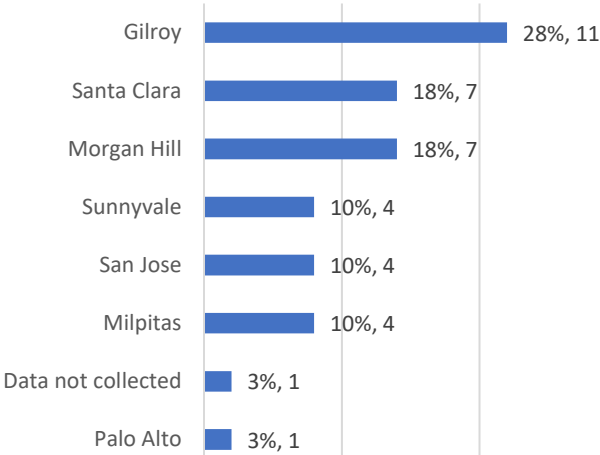


Valley Water Outreach Report– FY24 Q1 (Cont’d)

- The following are and demographics for 47 individuals currently enrolled in Community Hotline - Hotline Outreach (Valley Water OSH).



In which city do you spend most of your time (Most recent VI-SPDAT)



Stream Stewardship Law Enforcement (SSLE)

- **February 9 Statistics:** 2 arrests; 0 citations; 2 warrants associated to the individuals arrested/cited.
- **February 16 Statistics:** 7 arrests; 4 citations; 10 warrants associated to the individuals arrested/cited.
- **March 15 Statistics:** 1 arrests; 4 citations; 2 warrants associated to the individuals arrested/cited.
- **March 26 Statistics:** 1 arrests; 2 citations; 3 warrants associated to the individuals arrested/cited.

Outreach Services Update: CCFMMP MOA with CSJ

Census Count Description	Number of Individuals
Individuals identified by name in Project area	171
Individuals in the Project area with no identifying information	29
Total number of individuals counted in Project area	200
Individuals currently enrolled in HomeFirst outreach services	41
Individuals exited from HomeFirst outreach services	94
Total individuals provided outreach services to date (includes currently enrolled and exited)	135

During the course of its outreach, HomeFirst identified 13 children who are associated with households in the Project area. The children were not in the encampment when it was abated, but are connected to some of the households living in the Project area. HomeFirst will continue to support these children and households.

Housing Update: CCFMMP MOA with CSJ

Housing/Shelter Services	Total
Individuals exited to Guadalupe EIH site	43
Individuals exited to other destinations (e.g., other EIH sites, Bridge Housing Communities, etc.)	43
Remaining Unsheltered Individuals	77
Total individuals identified by name	163

The City's agreement with Valley Water allocates \$1,782,000 to implement housing strategies. To date, these funds have been used for the 30 units set aside at the Guadalupe EIH site; these units were established as a core component of the Project. The cost of the 30 set aside units is being used to spend down a portion of Valley Water funding at approximately \$75,000 per month. As units at the Guadalupe EIH site become available, HomeFirst's outreach team will continue to refer individuals from the Project area to the Guadalupe EIH site.

Cost Update: CCFMMP MOA with CSJ

Agreement Services	Current Expenditures	Budgeted Amount	Percentage Spent
Coordination of Abatement Activities, Personal Property, and Security Efforts	\$ 15,131	\$ 312,544	5%
Unhoused Services, Support, Outreach	\$ 649,051	\$ 3,611,870	18%
Trash Disposal	\$ 14,726	\$ 100,000	15%
SJPD Secondary Employment Unit - Initial Abatement	\$ -	\$ 100,000	0%
Tow Officers (SJPD)	\$ -	\$ 50,000	0%
Processing of Personal Property	\$ 25,780	\$ 75,000	34%
Conex boxes for storage of Personal Property	\$ -	\$ 20,000	0%
Removing/towing/disposing of vehicles - City Tow Vendors	\$ 20,130	\$ 225,000	9%
Installation and Repair of structural deterrents	\$ 124	\$ 350,000	0%
Grand Total:	\$ 724,941	\$ 4,844,414	15%

QUESTIONS

