



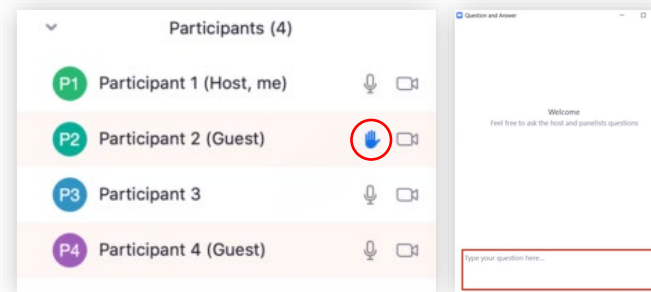
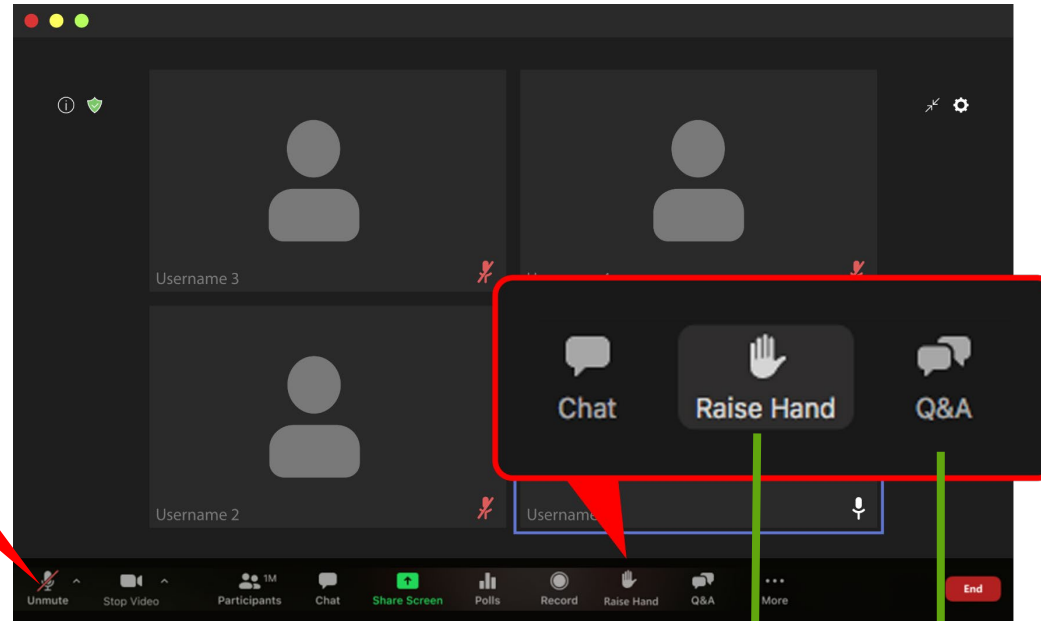
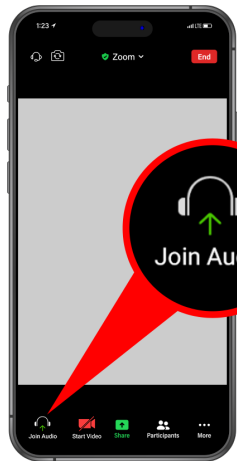
# Valley Water

Clean Water • Healthy Environment • Flood Protection

**Thank you for joining us. We will  
be starting our meeting shortly.**

# Zoom Webinar Instructions

## JOIN COMPUTER AUDIO



### If internet is unstable, use Phone Audio

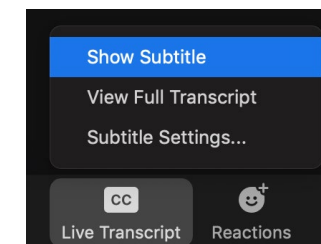
- Check your invite/email for call-in number and meeting ID
- Dial call-in number: **1-669-900-9128**
- Enter webinar ID then #

## ASK A QUESTION

- After we enable your mic, you have to unmute yourself before you verbally ask your question.

### If only on phone:

- Press \*9 to **raise your hand**.
- Press \*6 to **mute/unmute** yourself.



## ENABLE CLOSED CAPTIONS/LIVE TRANSCRIPT



# Palo Alto Flood Basin Tide Gate Structure Project Seismic Retrofit & Rehabilitation

August 2025

Project website: [valleywater.org/pafbtidegates](https://valleywater.org/pafbtidegates)



Valley Water

# WHY ARE WE HERE?

- Provide updated project details since November 2024
- Offer new information on the construction phase
- Inform and answer questions of the revised scope of work & construction



# EXISTING TIDE GATE STRUCTURE BUILT IN 1957

- Palo Alto Flood Basin (PAFB) provides flood protection for Matadero, Barron and Adobe Creeks
- City of Palo Alto operates one of the gates for managing the basin
- Tide gate structure part of the SF Bay Trail
- The gates hold high-tide water out and allow the basin to drain at low-tide



# PROJECT LOCATION



# PROJECT OBJECTIVES & BENEFITS

## Objectives

- Retrofit tide gate to reduce seismic vulnerabilities
- Rehabilitate structure to extend the service life (+20 Years)
- Enhance maintenance access

## Benefits

- Improved tide gate deck surface quality and safety for trail users
- Reduced trail closure needs when staff needs to access the area below tide gate structure deck

# EXISTING TIDE GATE STRUCTURE CONDITIONS

Spalled concrete spots on deck surface

42" fence height is substandard for bicyclist safety

Spalled concrete and corroded steel reinforcement

basin side

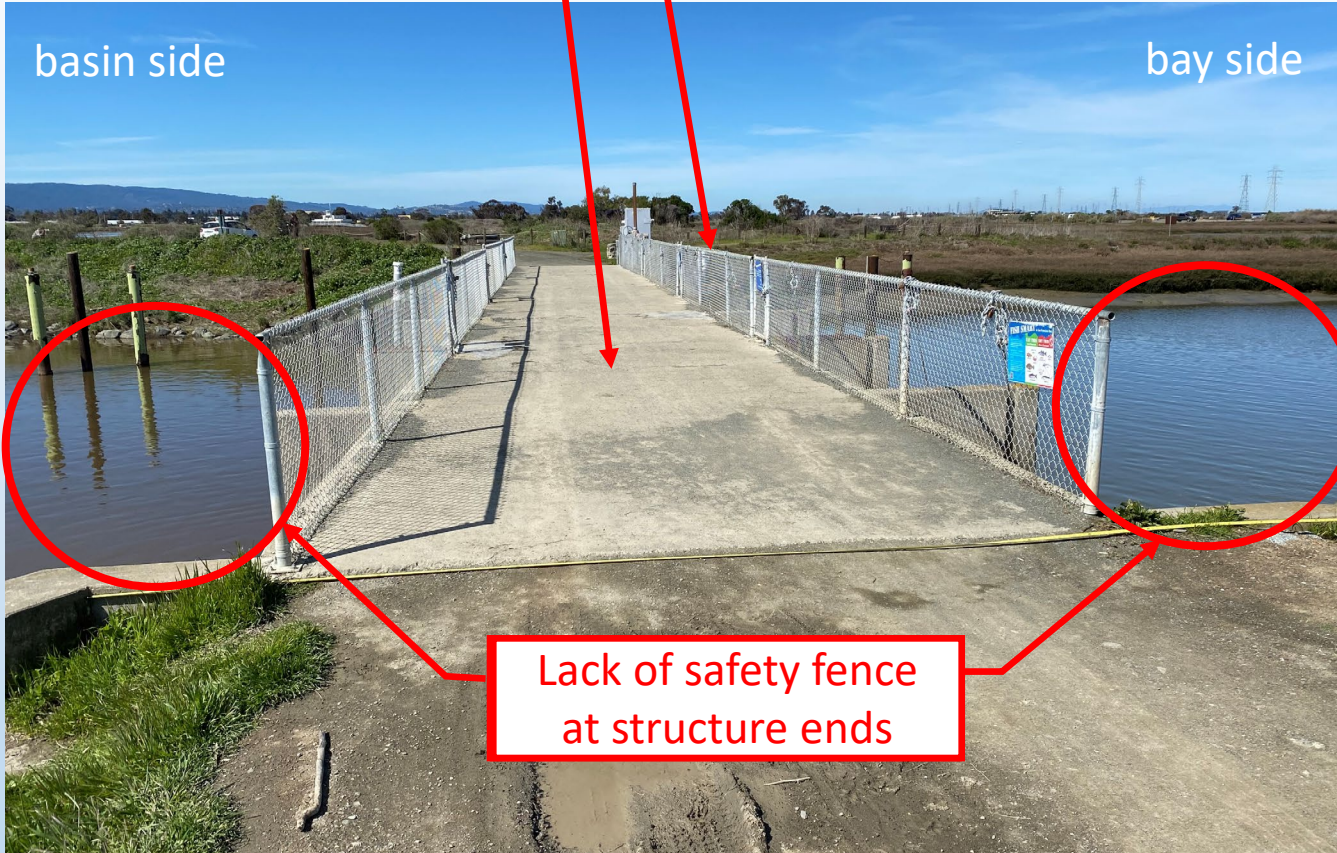
bay side

Trash rack needs to be lifted to access area below the deck

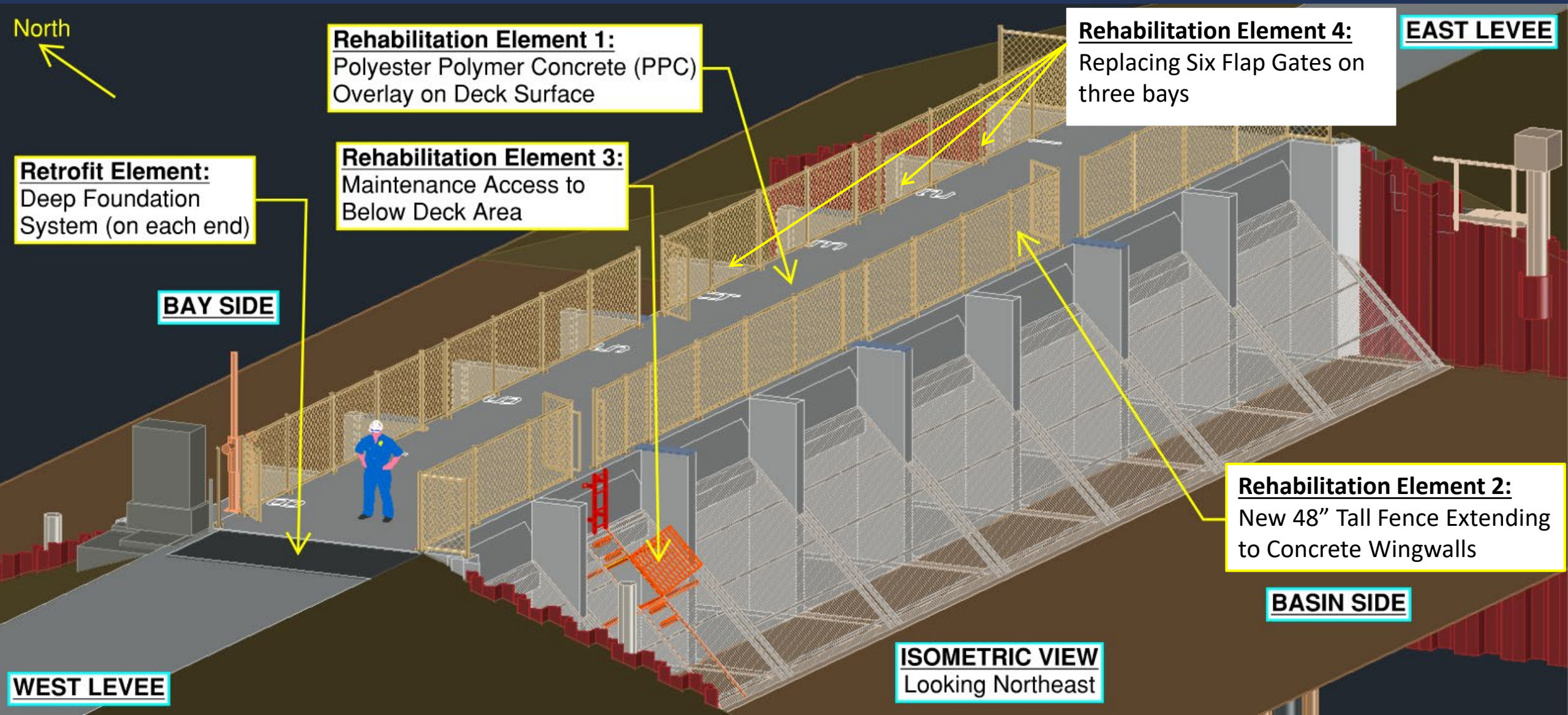
Lack of safety fence at structure ends

View of the structure from the east.

Trash rack located on the basin side.



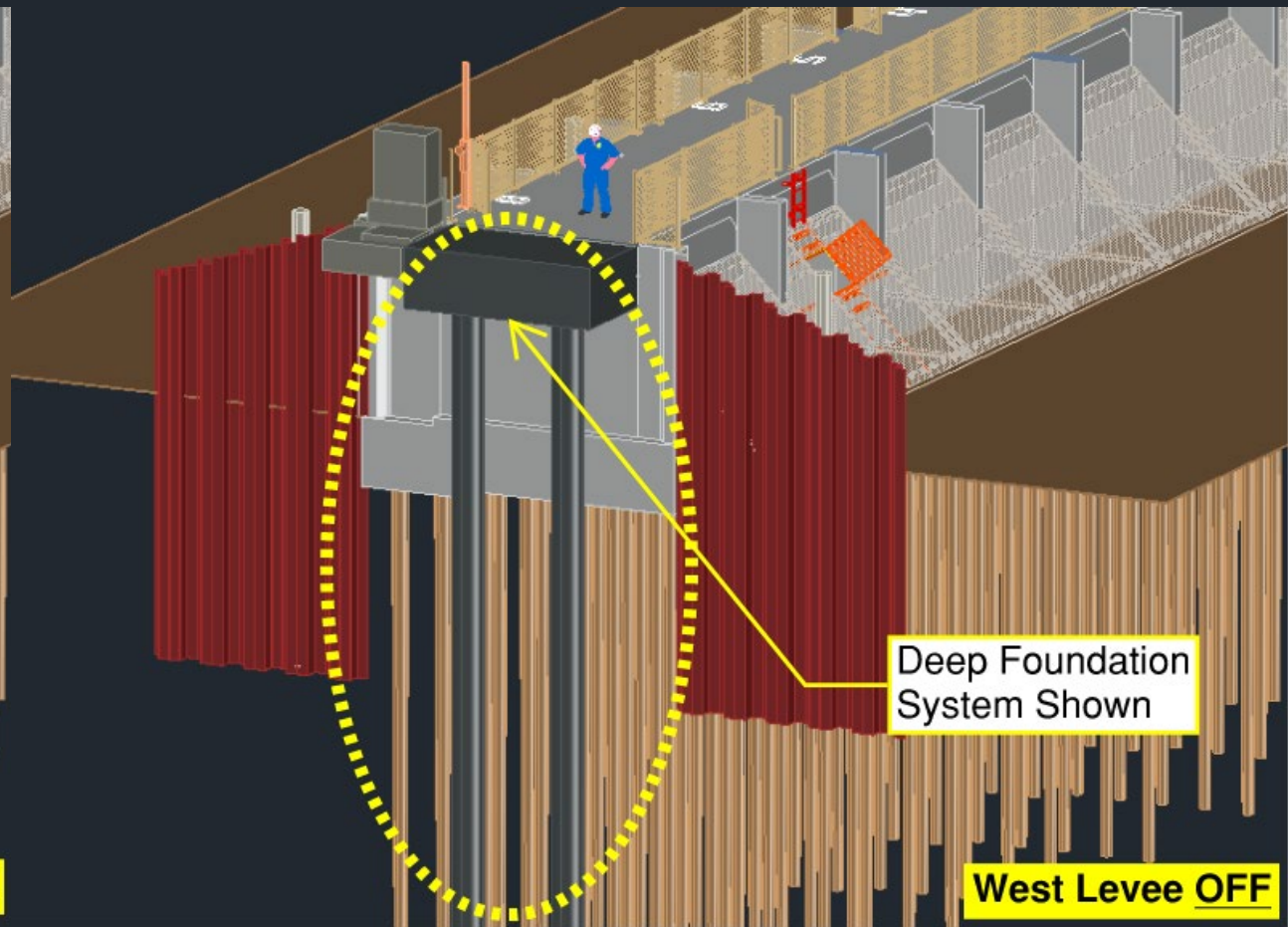
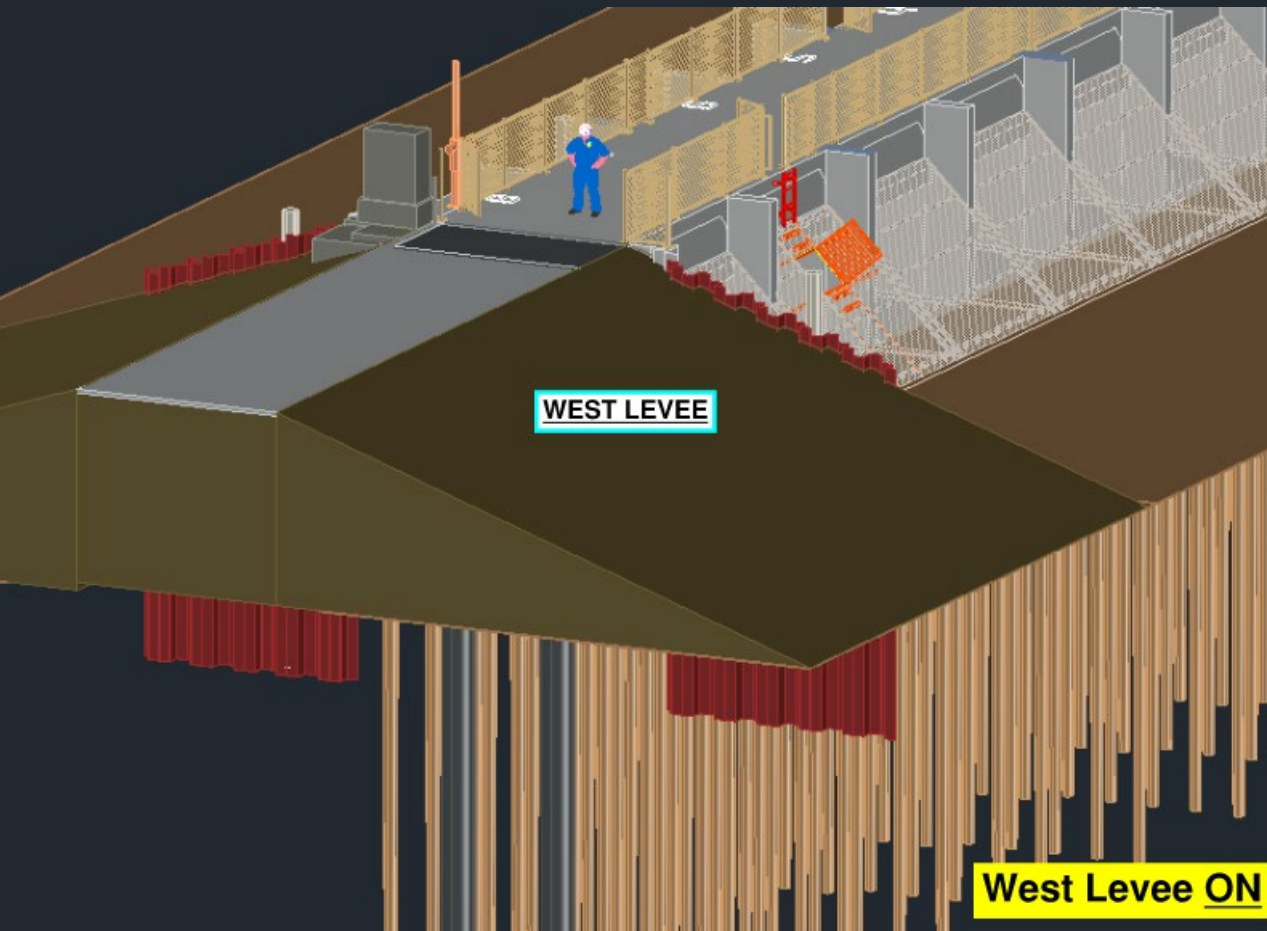
# WORK SCOPE



**CONCEPTUAL DESIGN:** These displays are intended to provide visualization of the design concepts. Final design may not be exactly as shown.

Construction worker 3D model source:  
G. O'Donoghue. (2018, September 5). Ernie2b.dwg. Available: <https://grabcad.com/library/826937>

# WORK SCOPE: DEEP FOUNDATION



**CONCEPTUAL DESIGN:** These displays are intended to provide visualization of the design concepts. Final design may not be exactly as shown.

Construction worker 3D model source:  
G. O'Donoghue. (2018, September 5). Ernie2b.dwg. Available: <https://grabcad.com/library/826937>

# POLYESTER POLYMER CONCRETE (PPC) OVERLAY

- Paving material, hardened polyester resin and aggregate
- Provide durable and improved surface

*Local example: Cropley Avenue overpass above Interstate 680*

BEFORE



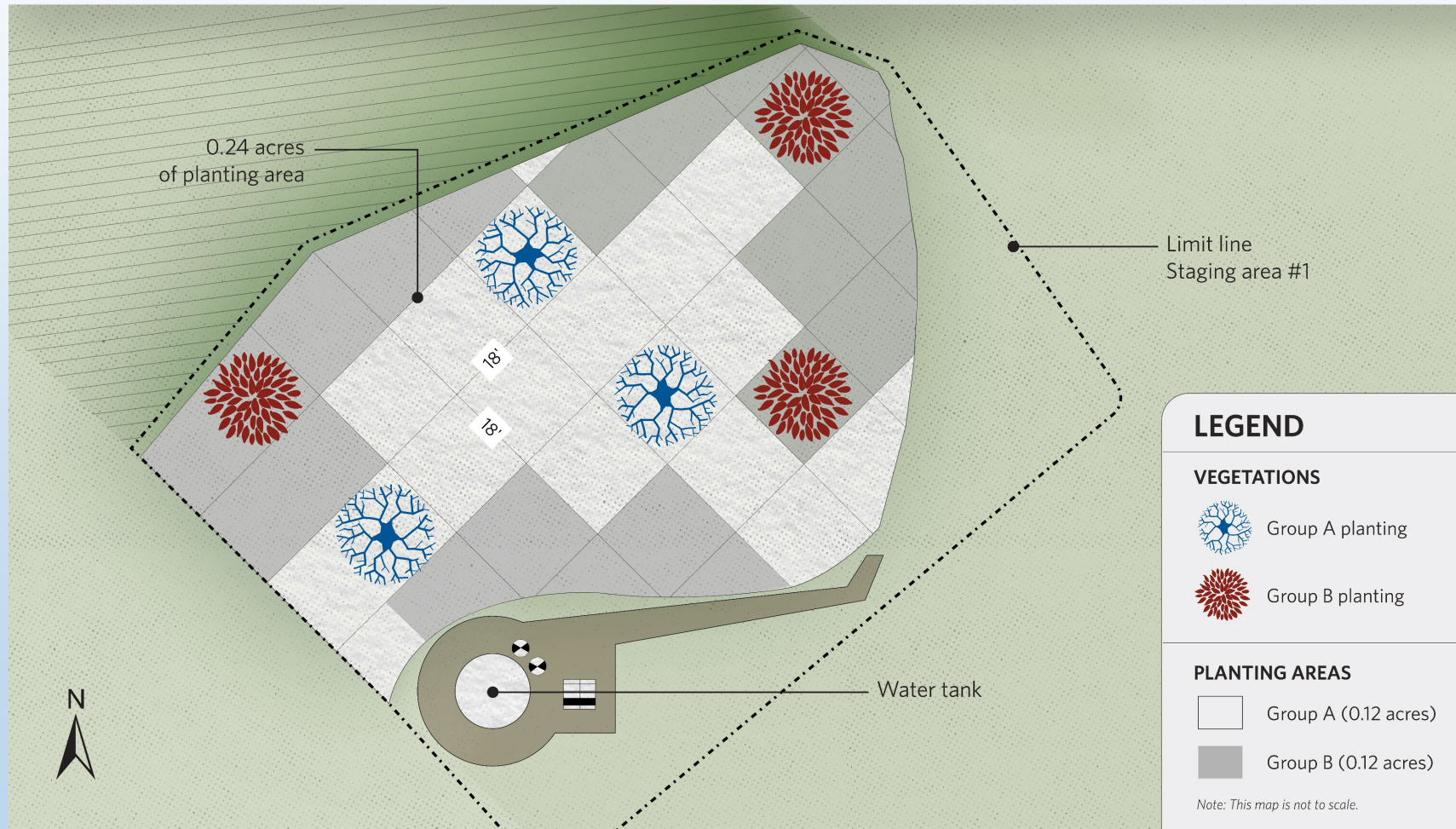
AFTER



*Photos are courtesy of the City of San Jose Department of Transportation*

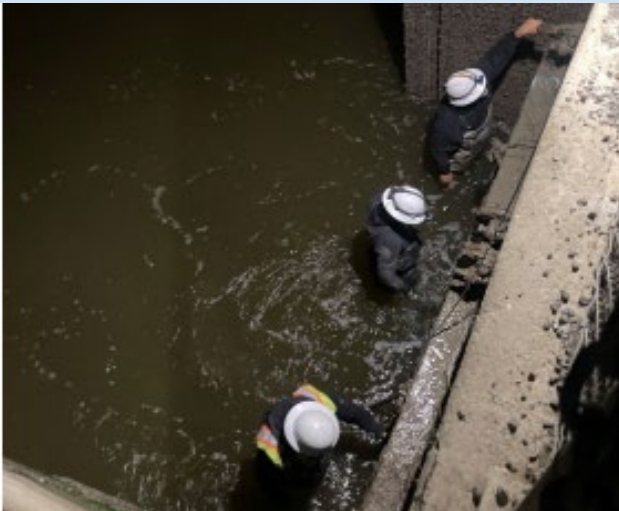
# PLANTINGS AND PLANT ESTABLISHMENT

- Native plants will be planted west of tide gate
- Planting area irrigated for at least 3 years
- Plants maintaining and monitored for 10 years



# WORK SCOPE: FLAP GATES REPLACEMENT

Existing conditions:



# WORK SCOPE: FLAP GATES REPLACEMENT

Examples:



# OVERALL PROJECT SCHEDULE



**Apr. 2, 2024 to Jan. 13, 2025: Public Meeting/Stakeholder Engagement**



**Oct. 22, 2024: VW Board Approves Project**



**Spring 2025: Obtain environmental permits**



**Aug. 12, 2025: Board Awards Contract (GSW Construction)**



**Sept. 15, 2025 to Jan. 31, 2026: Construction Season 1**



**Sept. 1, 2026 to Oct. 15, 2026: Construction Season 2**



**Feb. 1, 2026 to Jan. 1, 2029: Plant Establishment Period**

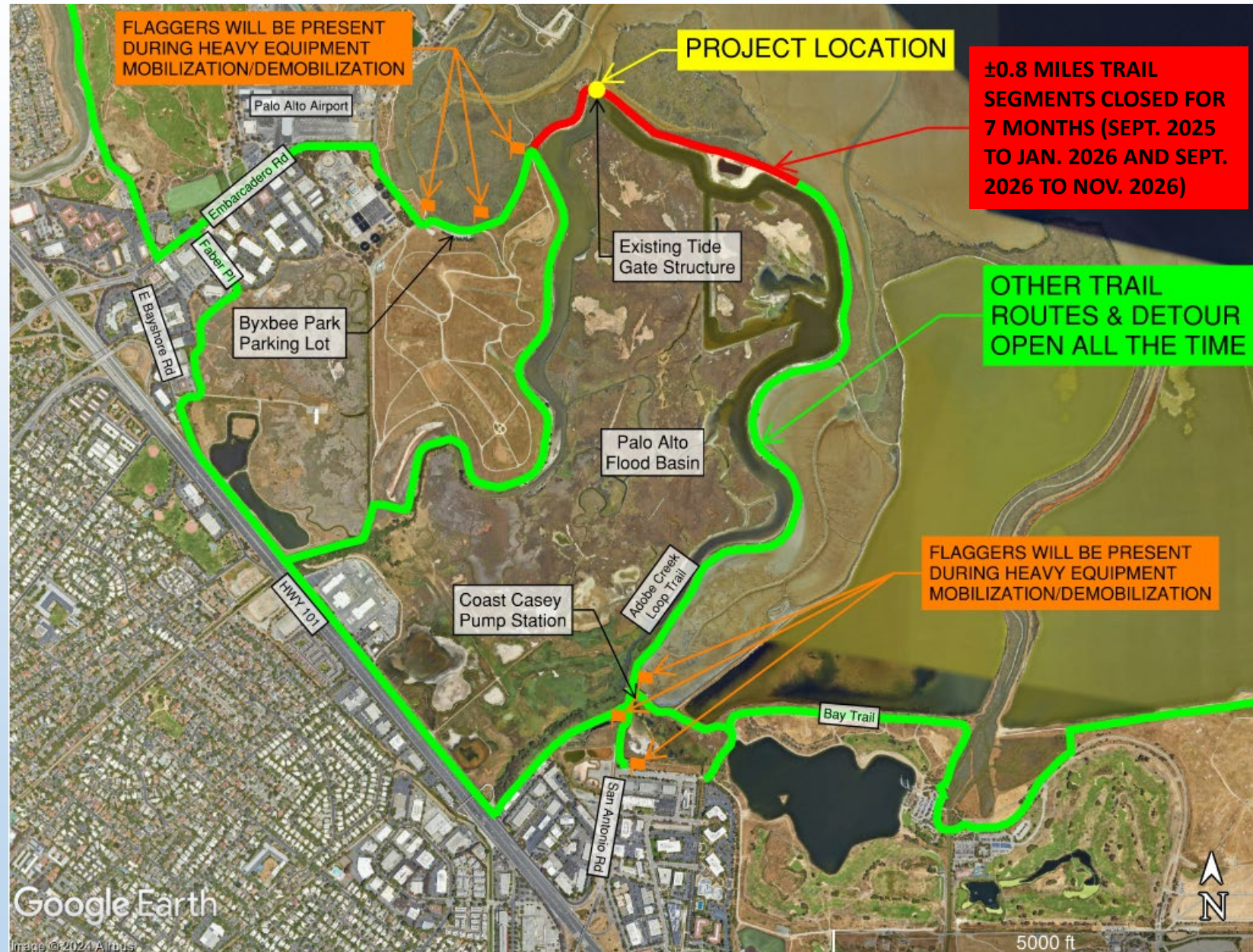
# ENVIRONMENTAL REVIEW AND PERMITTING

- City of Palo Alto Approved Parks Improvement Ordinance January 2025.
- California Environmental Quality Act (CEQA) Review Completed October 2024.
- Other Environmental Permits Received June 2025.



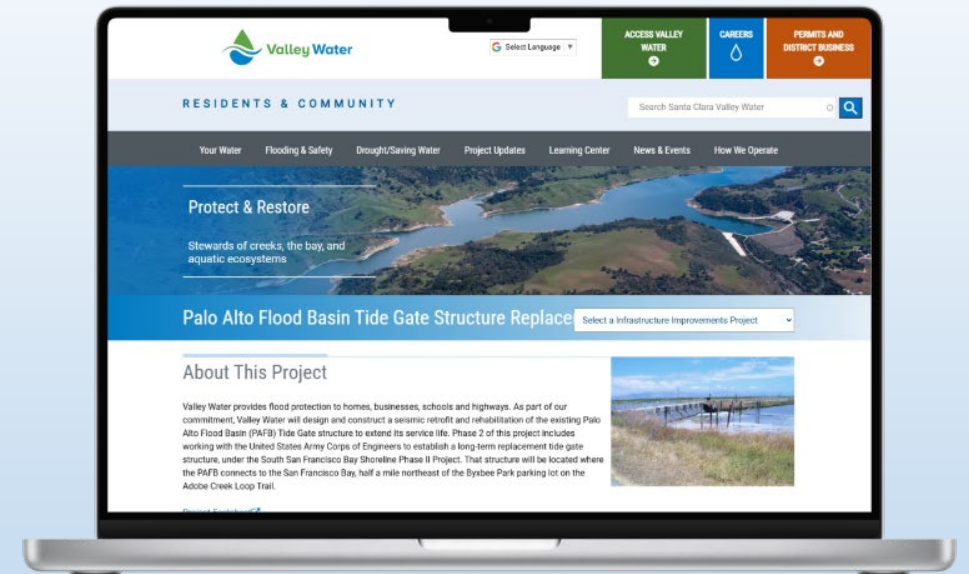
# CONSTRUCTION IMPACT: TRAIL CLOSURES

- Closure of approximately 0.8 mile of trail segment between Sept. 2025 – Jan. 2026 and Sept. 2026 – Nov. 2026
- Work hours: Monday to Friday, 8 a.m. to 6 p.m.; Saturday as necessary. (Access from San Antonio Road 7:30 a.m. to 4 p.m.)
- Occasional construction traffic during work hours
- Flaggers will be present during mobilization/demobilization of heavy equipment



# PROJECT WEBSITE AND CONTACTS

- Reports, documents, etc. available at our project website: [valleywater.org/pafbttidegates](https://valleywater.org/pafbttidegates)
- Mohammad Hussaini, Project Manager  
[Mhussaini@valleywater.org](mailto:Mhussaini@valleywater.org)
- Jiana Escobar, Neighborhood Liaison  
[JEscobar@valleywater.org](mailto:JEscobar@valleywater.org)



QUESTIONS?





# Valley Water

Clean Water • Healthy Environment • Flood Protection