

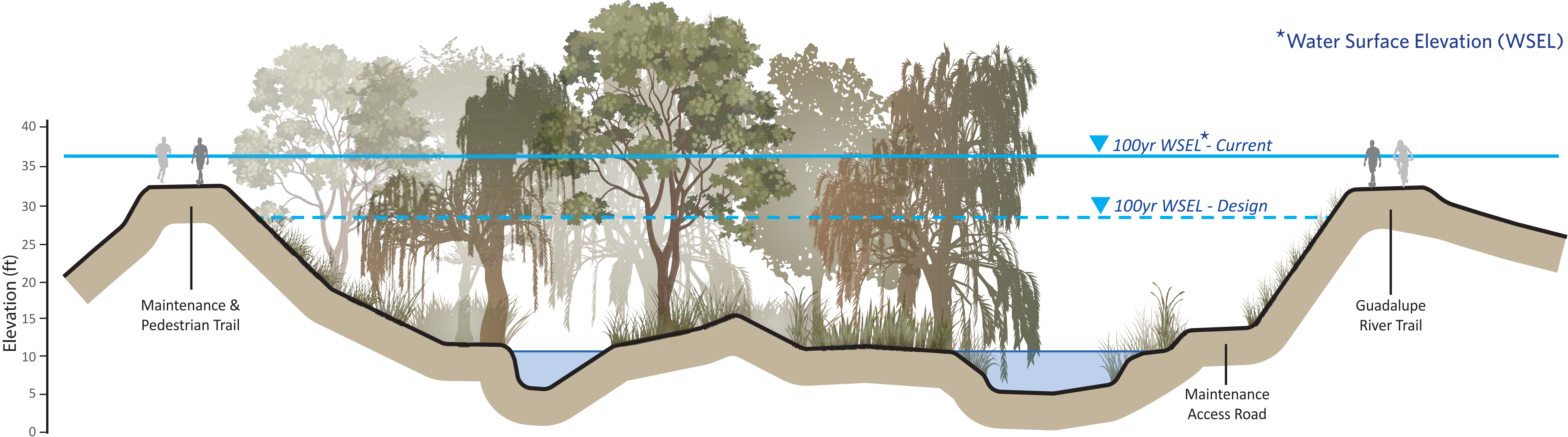
Lower Guadalupe River Project

Typical Section: Trimble Road to Montague Expressway

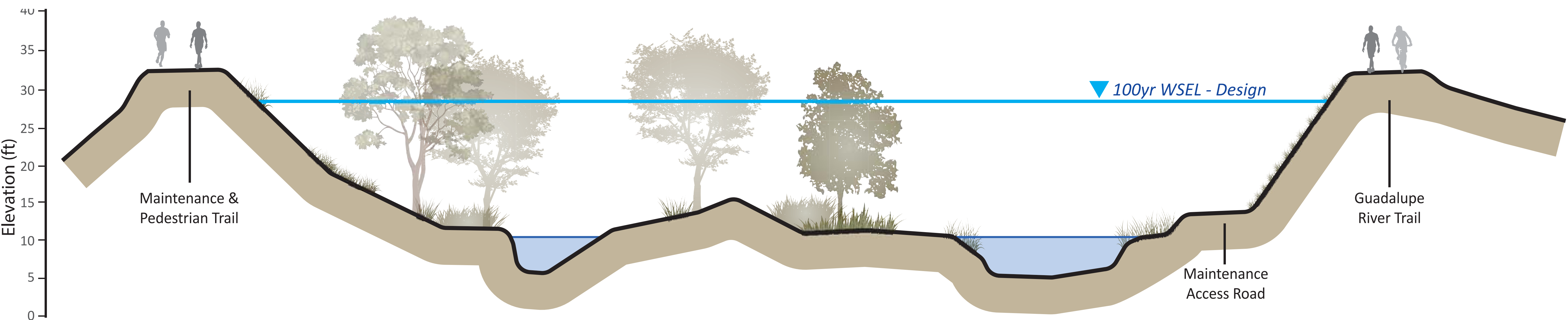


Facing Downstream to Montague Expressway

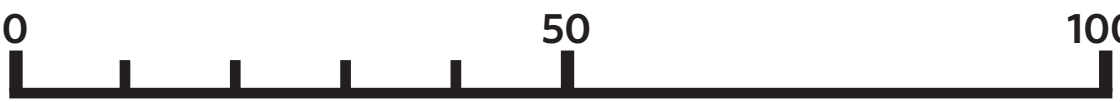
*Water Surface Elevation (WSEL)



Current Condition

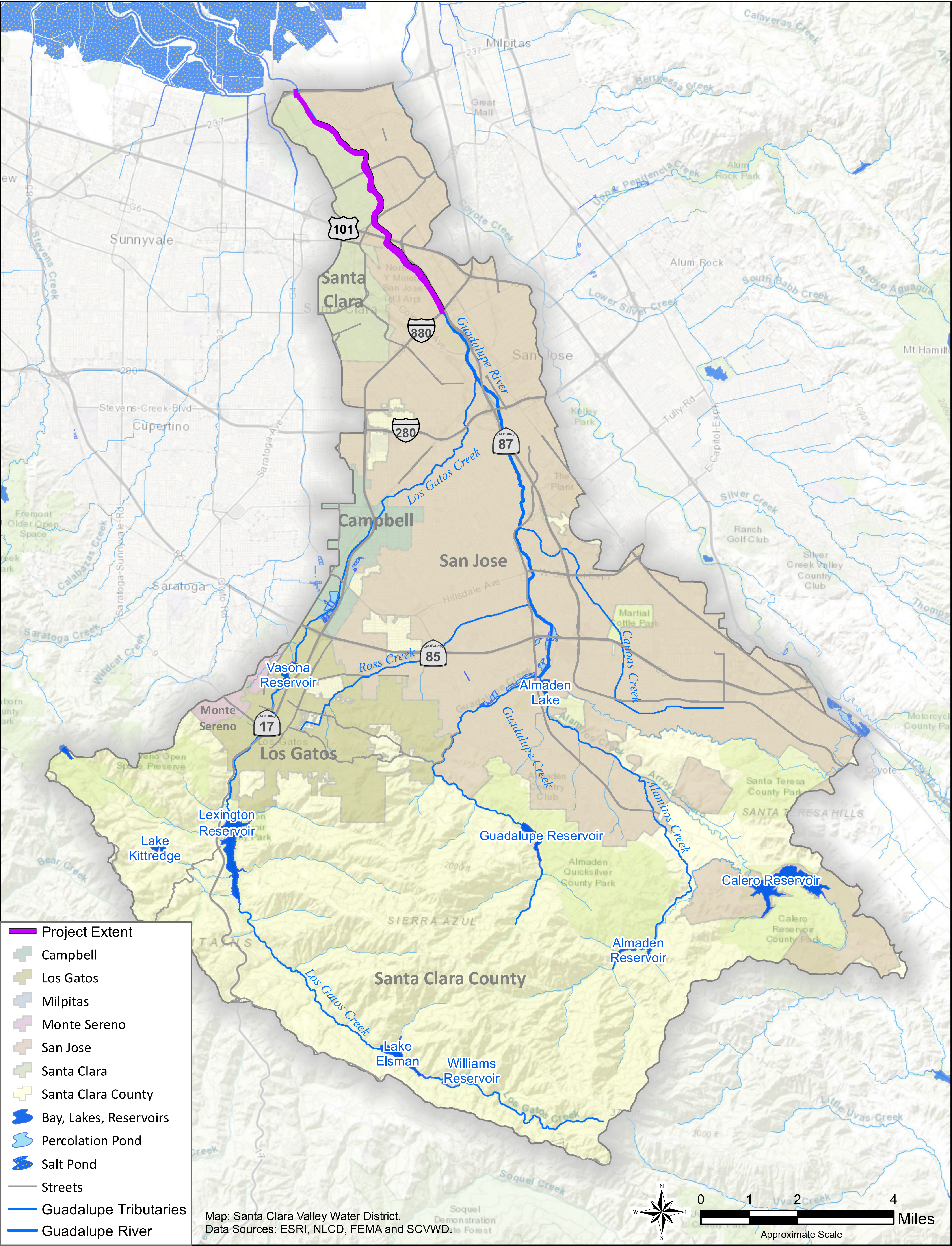


2004 Design Condition



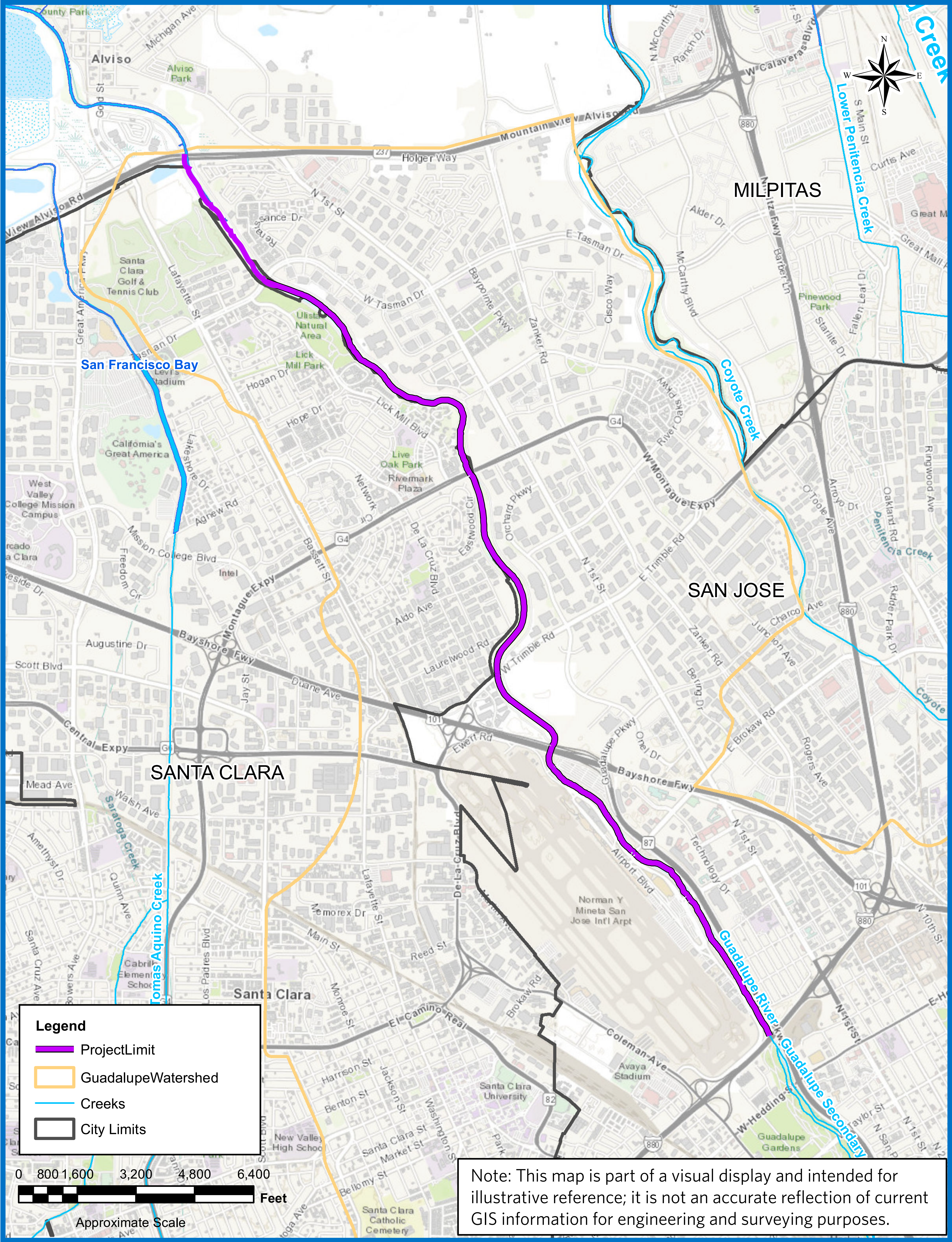
Lower Guadalupe River Project

Guadalupe Watershed



Lower Guadalupe River Project

Project Limit

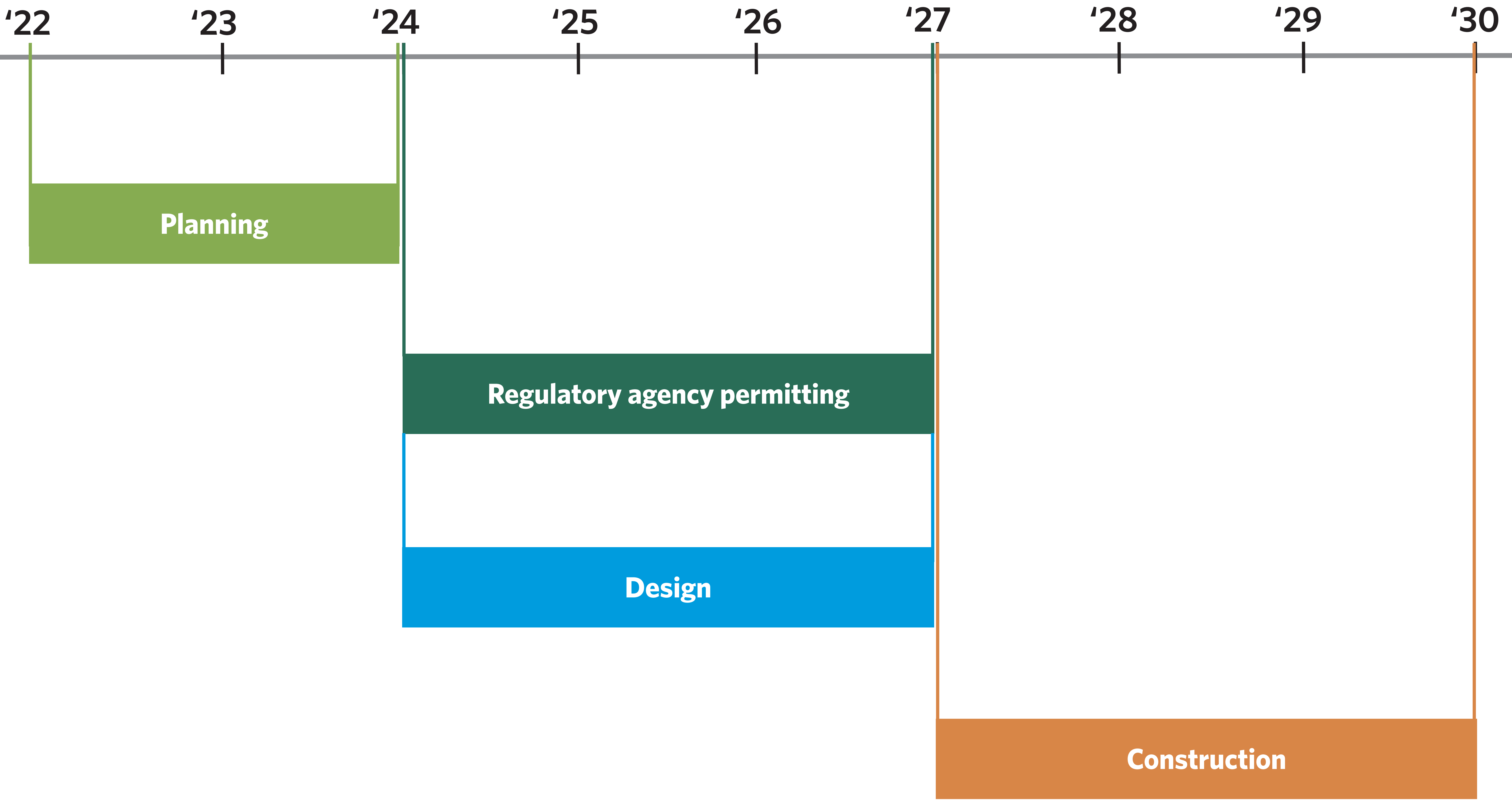


Lower Guadalupe River Project

Project Phases and Projected Schedule



Calendar Year



Lower Guadalupe River Project

Valley Water Recommended Alternative

