



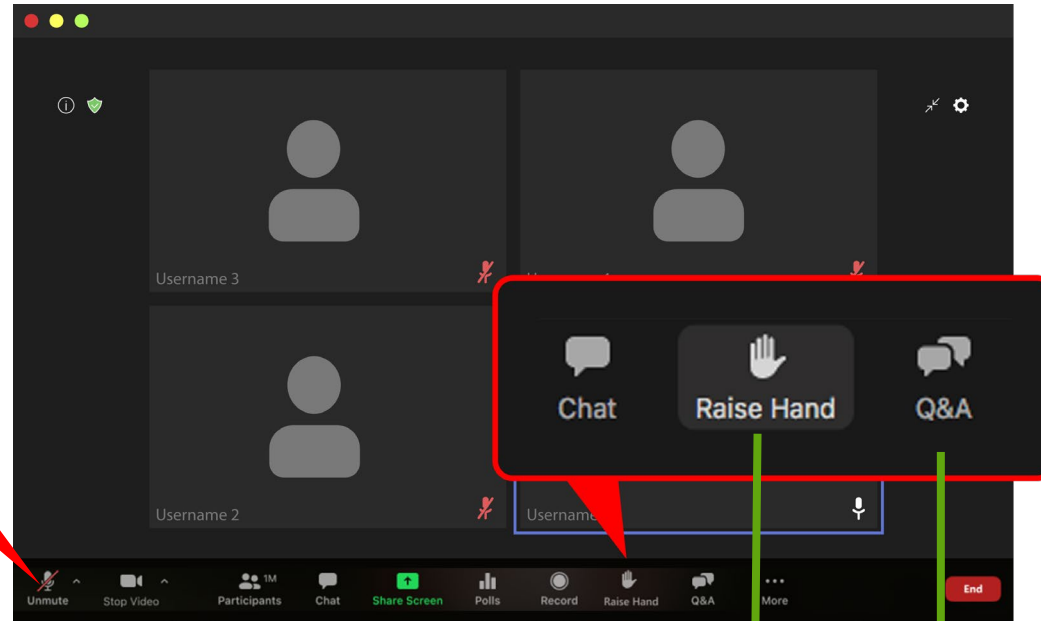
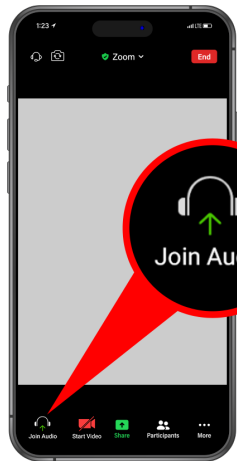
Valley Water

Clean Water • Healthy Environment • Flood Protection

**Thank you for joining us. We will
be starting our meeting shortly.**

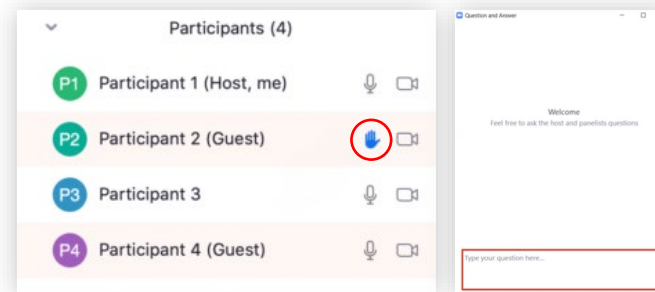
Zoom Webinar Instructions

JOIN COMPUTER AUDIO



If internet is unstable, use Phone Audio

- Check your invite/email for call-in number and meeting ID
- Dial call-in number: **1-669-900-9128**
- Enter webinar ID then #

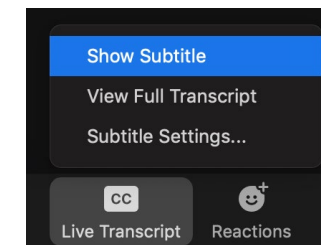


ASK A QUESTION

- After we enable your mic, you have to unmute yourself before you verbally ask your question.

If only on phone:

- Press *9 to **raise your hand**.
- Press *6 to **mute/unmute** yourself.



ENABLE CLOSED CAPTIONS/LIVE TRANSCRIPT



Palo Alto Flood Basin Tide Gate Structure Project Seismic Retrofit & Rehabilitation

November 20, 2024 Public Meeting

Project website: www.valleywater.org/pafbtidegates



Valley Water

WHY ARE WE HERE?

- Provide updates from April 14, 2020 public meeting
- Inform and answer questions of the revised scope of work



EXISTING TIDE GATE STRUCTURE BUILT IN 1957

- Palo Alto Flood Basin (PAFB) provides critical flood protection for Matadero, Barron, and Adobe Creeks
- City of Palo Alto operates one of the gates for managing the basin
- Tide Gate Structure bridges between PAFB levees as part of the SF Bay Trail
- The gates hold high-tide water out and allow the basin to drain at low-tide



PROJECT LOCATION



SEISMIC AND FLOOD RISK

- Existing structure constructed in 1957, outdated seismic code
- Large earthquake could damage the connection to the timber piles, causing displacement or settlement and subsequently preventing flap gates to properly open or close
- Stuck open flap gates allow bay water to enter PAFB
- Stuck closed flap gates prevent creeks water from leaving PAFB
- Coastal flooding, creek flooding, inundated PAFB habitat
- Significant structural damage requires closure of Adobe Creek Loop Trail portion

PROJECT OBJECTIVES

Current Work

- A. Retrofit the existing tide gate structure to reduce seismic vulnerabilities
- B. Rehabilitate the existing tide gate structure to extend the service life of the structure
 - Design estimate at least an additional 20 years life usage



PROJECT BENEFITS

- Continued coastal flood protection function
- Continued use of the Adobe Creek Loop Trail
- Improved tide gate structure deck surface quality and safety
- Continued protection for flood basin wildlife and habitat
- Reduced trail closure needs when staff requires below tide gate structure deck access



EXISTING TIDE GATE STRUCTURE CONDITION

Spalled concrete spots
on deck surface

42" fence height is
substandard for bicyclist safety

Spalled concrete and corroded
steel reinforcement

basin side

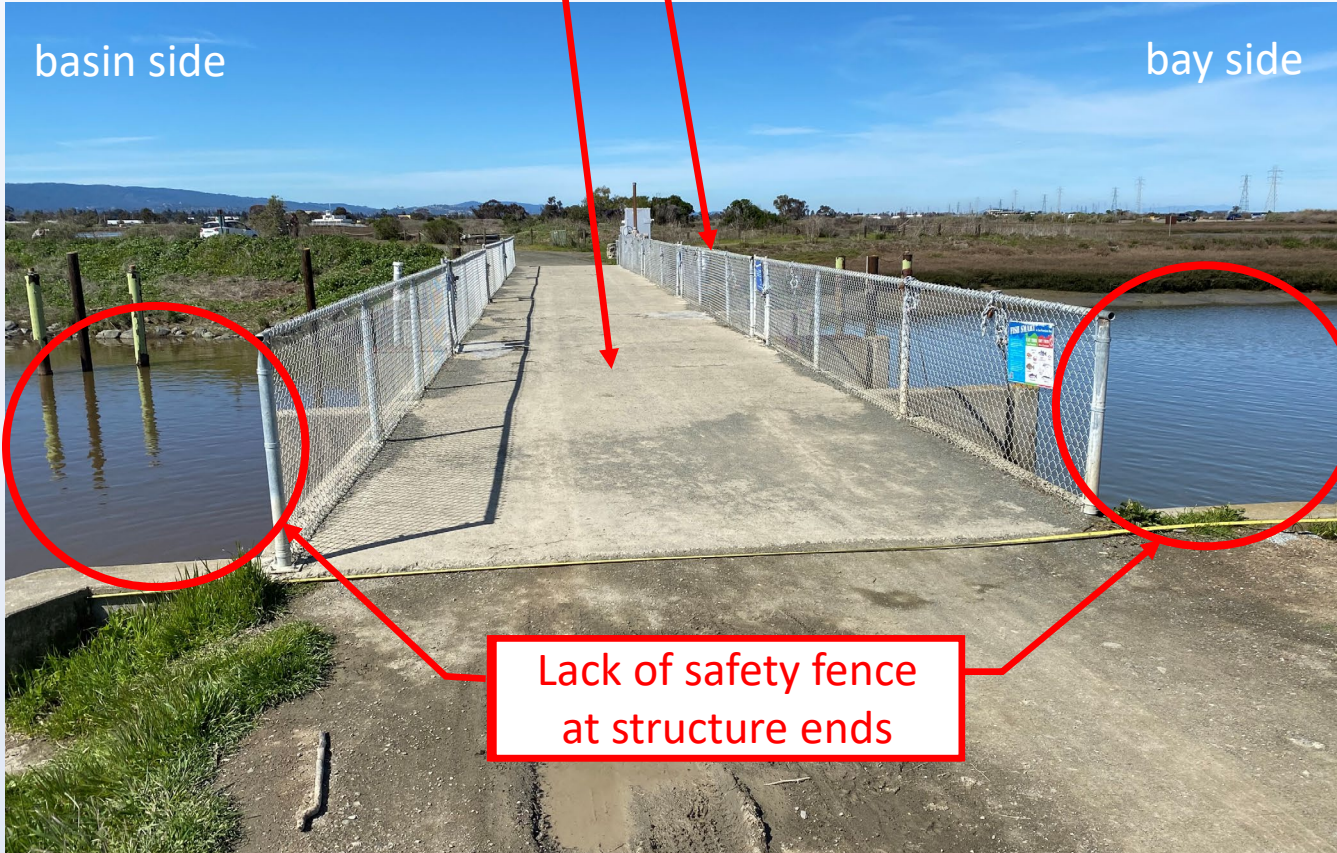
bay side

Trash rack needs to be
lifted to access area
below the deck

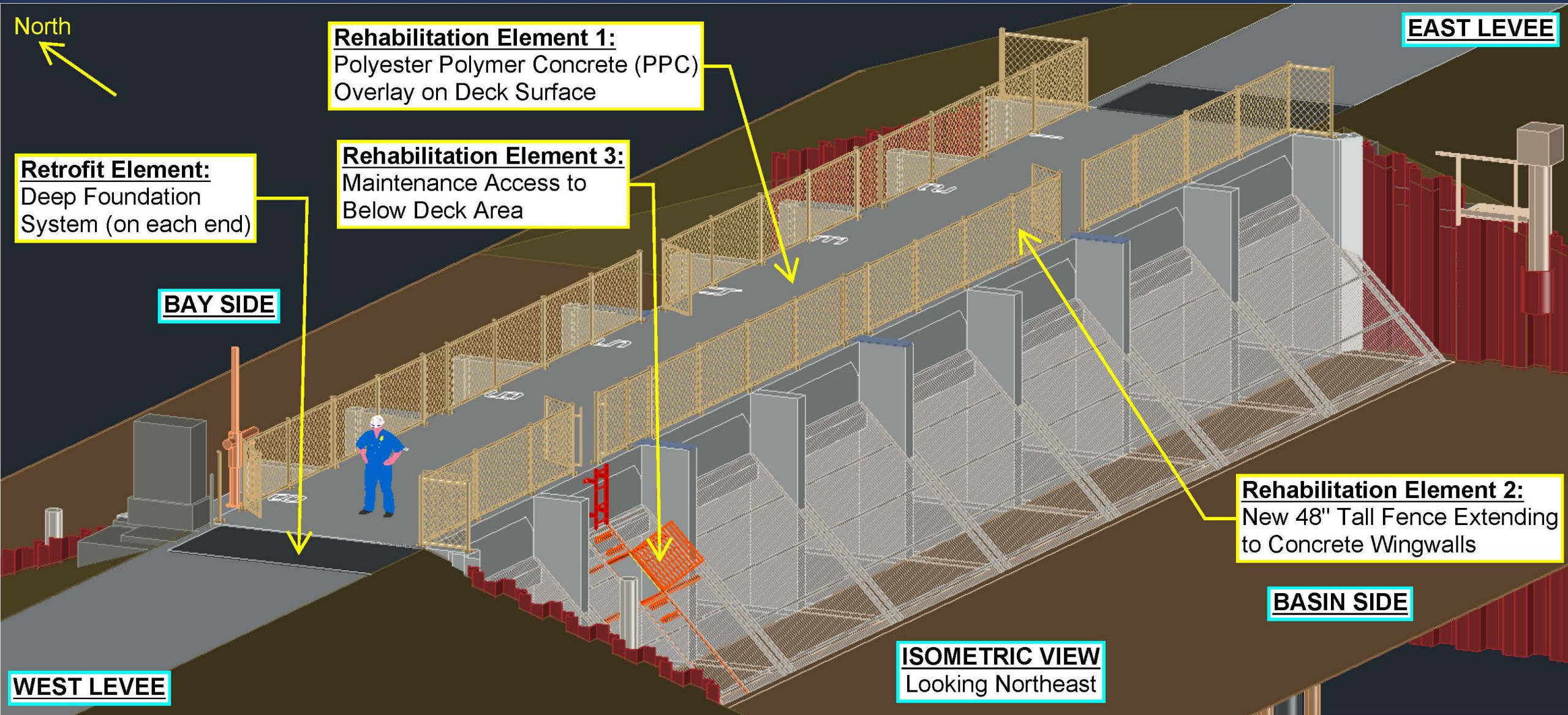
Lack of safety fence
at structure ends

View of the structure from the east

Trash rack located on the basin side



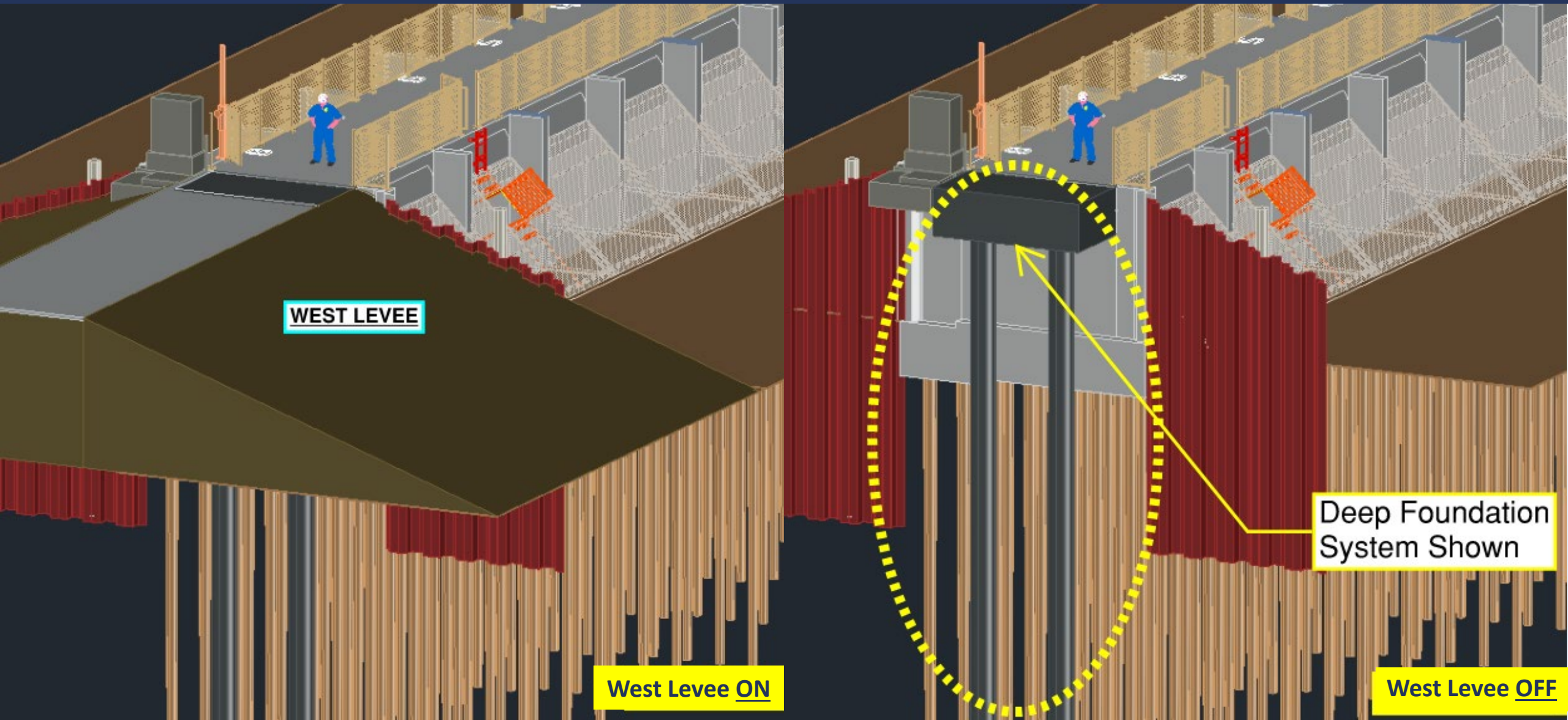
CURRENT WORK SCOPE



CONCEPTUAL DESIGN: This display is intended to provide visualization of the design concepts. Final design may not be exactly as shown.

Construction worker 3D model source:
G. O'Donoghue. (2018, September 5). Ernie2b.dwg. Available: <https://grabcad.com/library/826937>

CURRENT WORK SCOPE: DEEP FOUNDATION



WEST LEVEL

West Level ON

Deep Foundation System Shown

West Level OFF

CONCEPTUAL DESIGN: These displays are intended to provide visualization of the design concepts. Final design may not be exactly as shown.

Construction worker 3D model source:
G. O'Donoghue. (2018, September 5). Ernie2b.dwg. Available: <https://grabcad.com/library/826937>

POLYESTER POLYMER CONCRETE (PPC) OVERLAY

- Paving material, hardened polyester resin and aggregate
- Provide durable and improved surface
- Local example: Cropley Avenue overpass above Highway 680

BEFORE

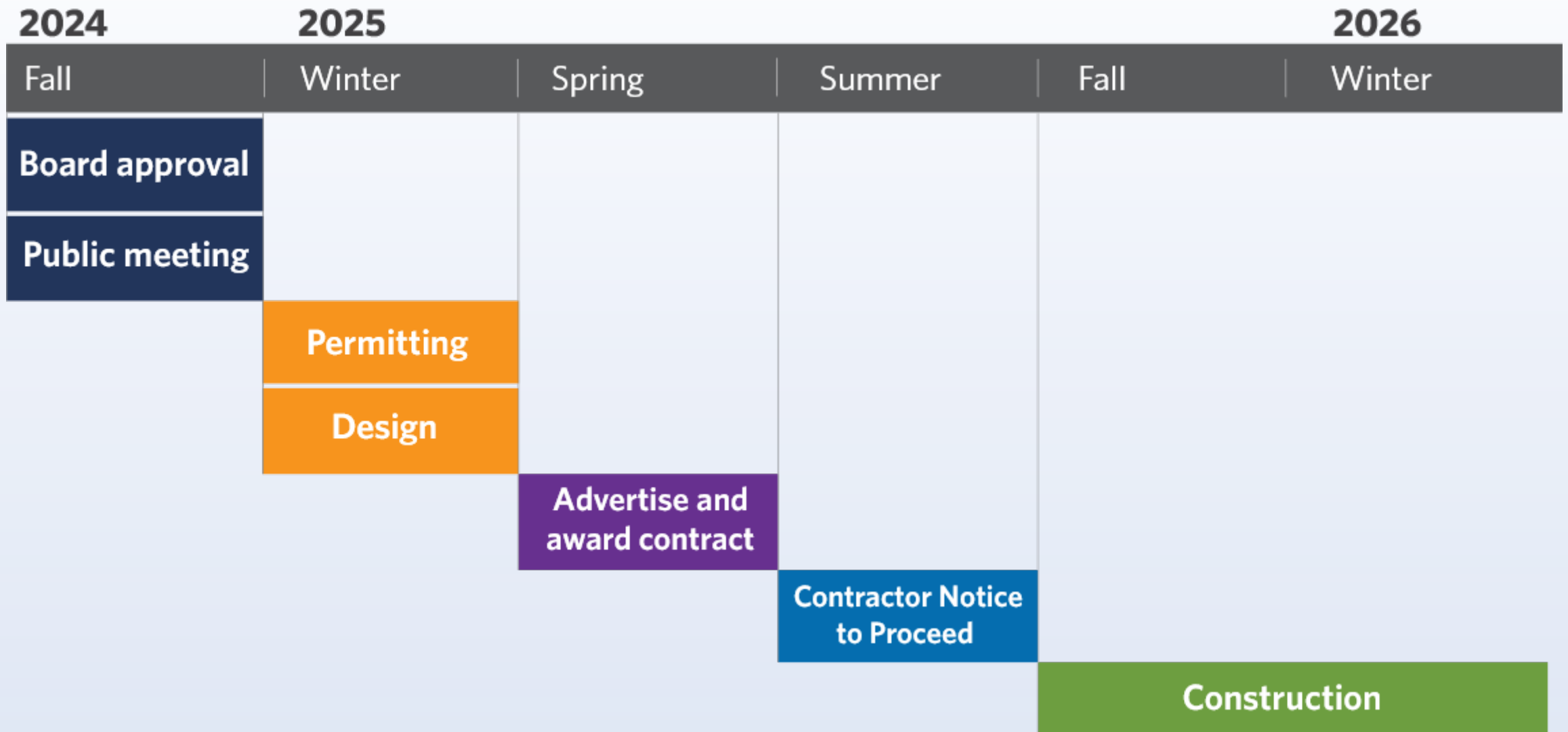


AFTER



Photos are courtesy of the City of San Jose Department of Transportation

TENTATIVE PROJECT SCHEDULE

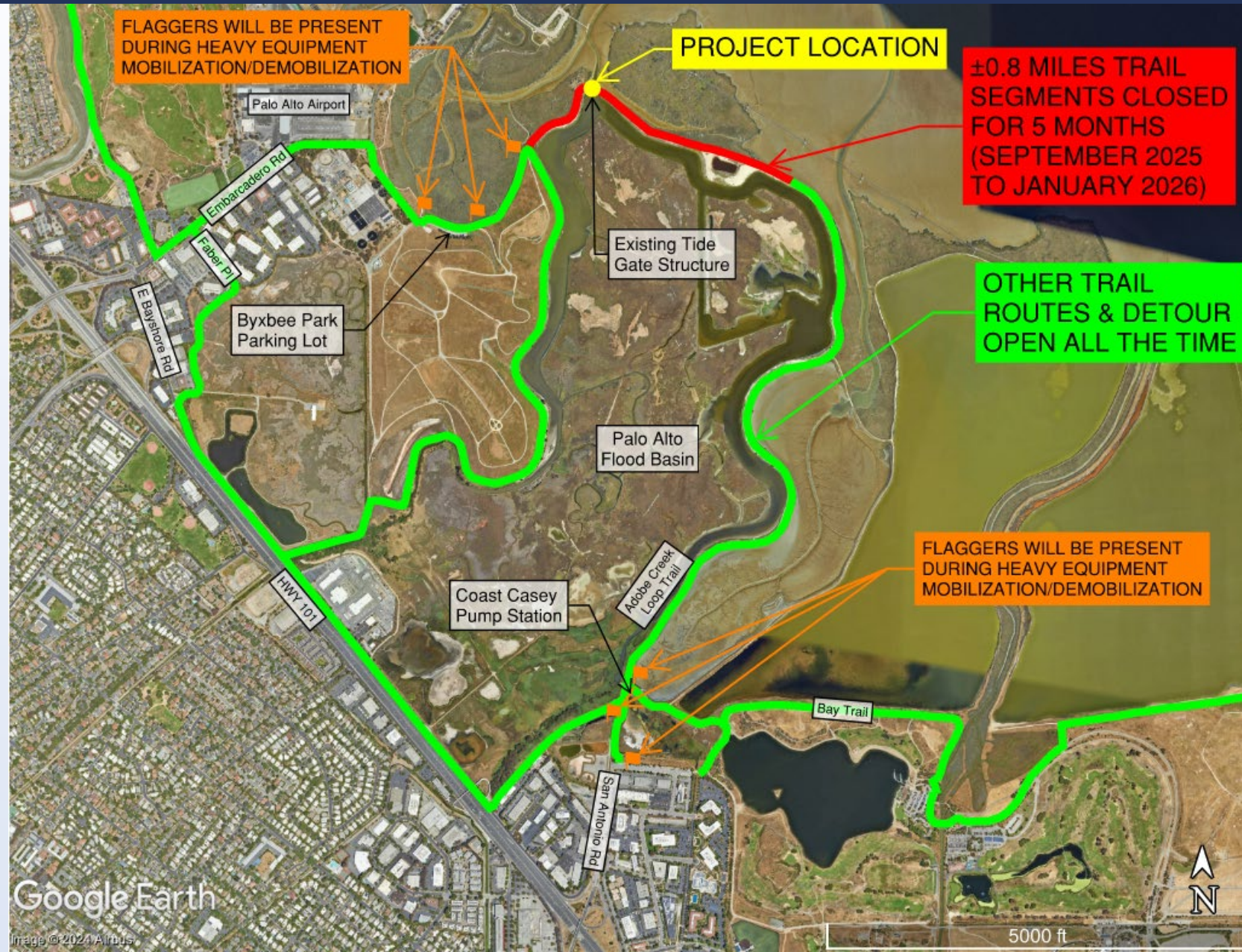


**All dates shown in this presentation are estimates and subject to change pending project development and acquisition of all required permits.*

CONSTRUCTION IMPACT: TRAIL CLOSURE

- Closure of approximately .8 mile of trail segment between September 2025 - January 2026
- Work hours: Monday to Friday, 7 a.m. to 6 p.m.* and on Saturdays when necessary
- Occasional construction traffic during work hours
- Flaggers will be present during mobilization/demobilization of heavy equipment
- Public outreach efforts

**Only if Noise Exception Permit is approved*



PUBLIC OUTREACH FOR TRAIL CLOSURES

- Pre-Construction Public Meeting
- Main project construction signage: 4' x 4' metal sign
- A-frame with project QR code at access points
- Project website:
valleywater.org/pafbtidegates
- Social media posts
- Nextdoor
- Postcard mailers and email to interested parties



ENVIRONMENTAL RESOURCES

- Unique setting along the Bay
- Sensitive fish and wildlife species
- Salt marsh, Bay, and PAFB habitat
- Adobe Creek Loop Trail/San Francisco Bay Trail
- Byxbee Park and Palo Alto Baylands



MINIMIZING ENVIRONMENTAL IMPACTS

- Work scheduled outside of the Ridgway's rail nesting season
- Work hours during civil twilight hours, no outdoor lighting
- Environmentally sensitive area fencing
- No direct impact to salt marsh
- No dewatering
- Noise limitation
- Full time biologist on site
- Implement Best Management Practices



ENVIRONMENTAL REVIEW AND PERMITTING

Mitigated Negative Declaration (MND)

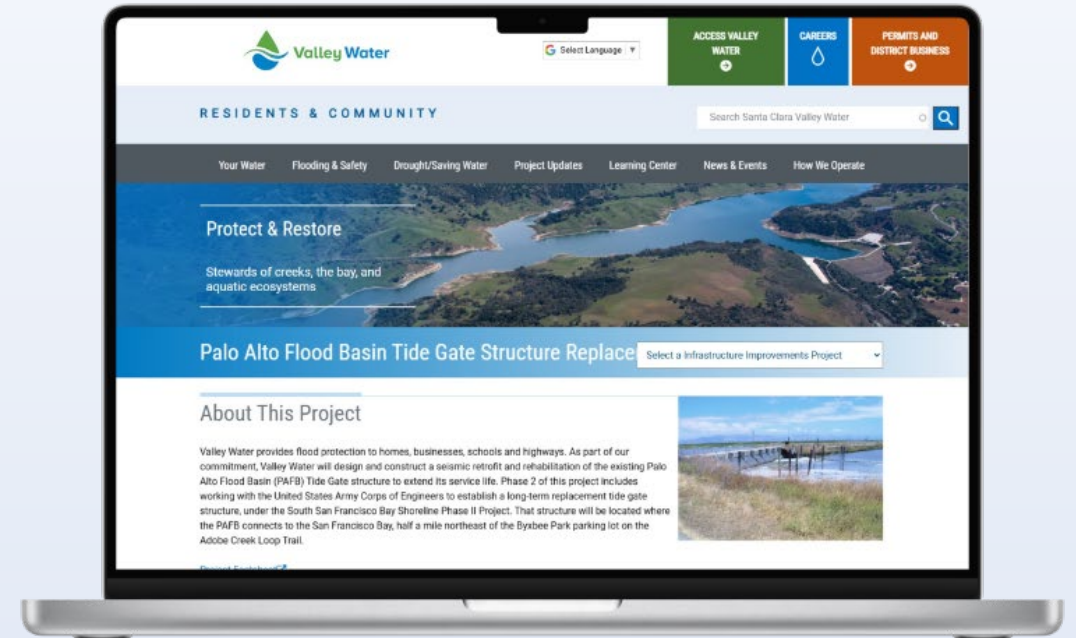
- Final MND was adopted on April 27, 2021, and is available on project website
- Addendum to the MND prepared in August 2024 and considered by Valley Water Board on October 22, 2024.

Environmental Permits:



PROJECT WEBSITE AND CONTACTS

- Reports, Documents, etc. available at our project website: valleywater.org/pafbttidegates
- Karl Neuman, Project Manager
KNeuman@valleywater.org
- Jiana Escobar, Neighborhood Liaison
JEscobar@valleywater.org



QUESTIONS



WATER SUPPLY MASTER PLAN 2050

More information on the
Water Supply Master
Plan can be found at
<https://delivr.com/2st85>.



For any questions
please contact **Jing Wu**
at jwu@valleywater.org.

The Water Supply Master Plan is Valley Water's guiding document for long-term water supply investments to ensure water supply reliability for Santa Clara County. Updated about every five years, this long-range plan assesses future countywide demands and evaluates and recommends water supply and infrastructure projects to meet those demands to achieve Valley Water's level of service goal through the planning horizon. The Water Supply Master Plan 2050 extends the planning horizon to 2050. Once developed, the plan will detail Valley Water's investment strategies to provide a safe, clean, and reliable water supply for Santa Clara County.



Valley Water

Clean Water • Healthy Environment • Flood Protection