



WELCOME

10th ANNUAL LANDSCAPE
SUMMIT

22nd CENTURY
LANDSCAPES



© Caitlin Atkinson, 2025



Story Wiggins

Terremoto, San
Francisco

GARDENS FOR THE NEXT CIVILIZATION
JUST - ALIVE - RELATIONAL - KIND - GENTLE
TERRE MOTO WITH LOVE FROM



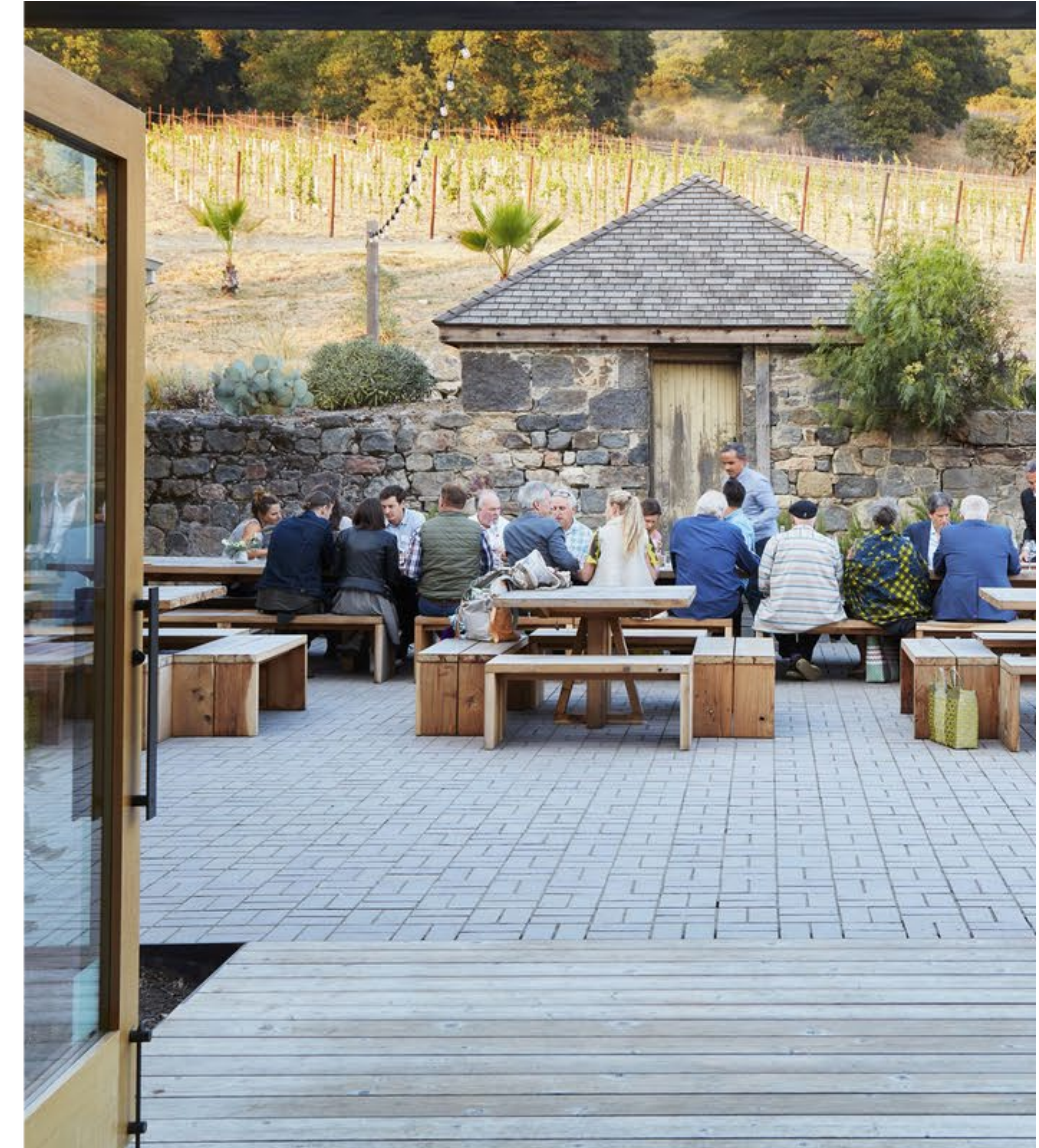




RESIDENTIAL



INSTITUTIONAL



HOSPITALITY

















A GARDEN IS A HUMAN-LED CURATION OF
MATERIALS AND BEINGS, BUILT AND
MAINTAINED WITH LABOR, ON THE MEDIUM
OF LAND THROUGH TIME.

A GARDEN IS A HUMAN-LED CURATION OF
MATERIALS AND BEINGS, BUILT AND
MAINTAINED WITH LABOR, ON THE MEDIUM
OF LAND THROUGH TIME.

A GARDEN IS A HUMAN-LED CURATION OF
MATERIALS AND BEINGS, BUILT AND
MAINTAINED WITH LABOR, ON THE MEDIUM
OF LAND THROUGH

TIM





MAK CENTER / SCHINDLER
INSTALLATION LOS
ANGELES



TWO BUNCH PALMS
HOT SPRINGS + RESORT
DESERT HOT SPRINGS







NICASIO
RESIDENCE
SONOMA COUNTY





SANTA YNEZ
RESIDENCE SANTA
YNEZ VALLEY



EICHLER #1
RESIDENCE
LOS ANGELES



LATIMER
RESIDENCE
LOS ANGELES



AMBER
RESIDENCE SAN
FRANCISCO



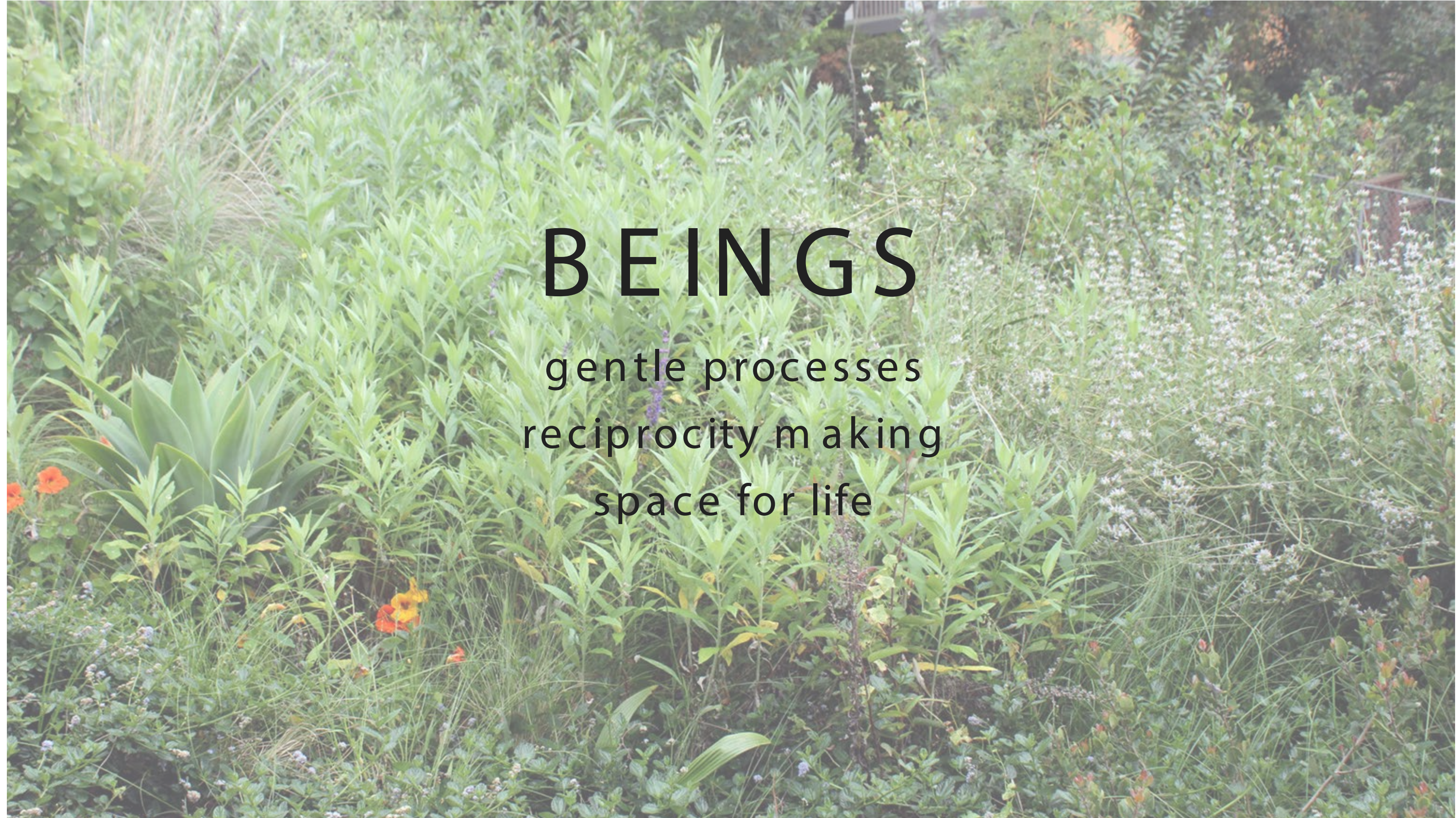
NICHOLS CANYON
RESIDENCE LOS
ANGELES



MIGHTY ARROW REGENERATIVE
FARM + RESIDENCE SONOMA
COUNTY









COARSEGOLD
RESIDENCE
MADERA COUNTY

















SEED HARVESTING FROM LOCAL WATERSHED





SPECIES	Starr King	PGE	pot size	total	timeline (susan let me know if any of this is off)
Bridaiae terrestris	15	0	D16	15*	1 yr in nursery
Dichelostemma capitatum	50	0	D16	50	1 yr in nursery
Lomatium caruifolium	50	0	D16	50	spring 2025?
Lupinus succulentus	50	0	D16	50	spring 2025?
Plantago erecta	20	0	stubby	20	?
Stipa pulchra	40	0	D16	40*	ready winter 2024/2025
Triteleia laxa	0	30	D16	30	1 yr in nursery
Chalochortus luteus	0	20	D16	20*	2-3 years in nursery; transition to terremoto care after 1 yr

200

*or as many as possible







7TH AVENUE GARDEN EVENT SPACE / INSTALLATION (IN COLLABORATION
WITH DAVID HORVITZ) LOS ANGELES















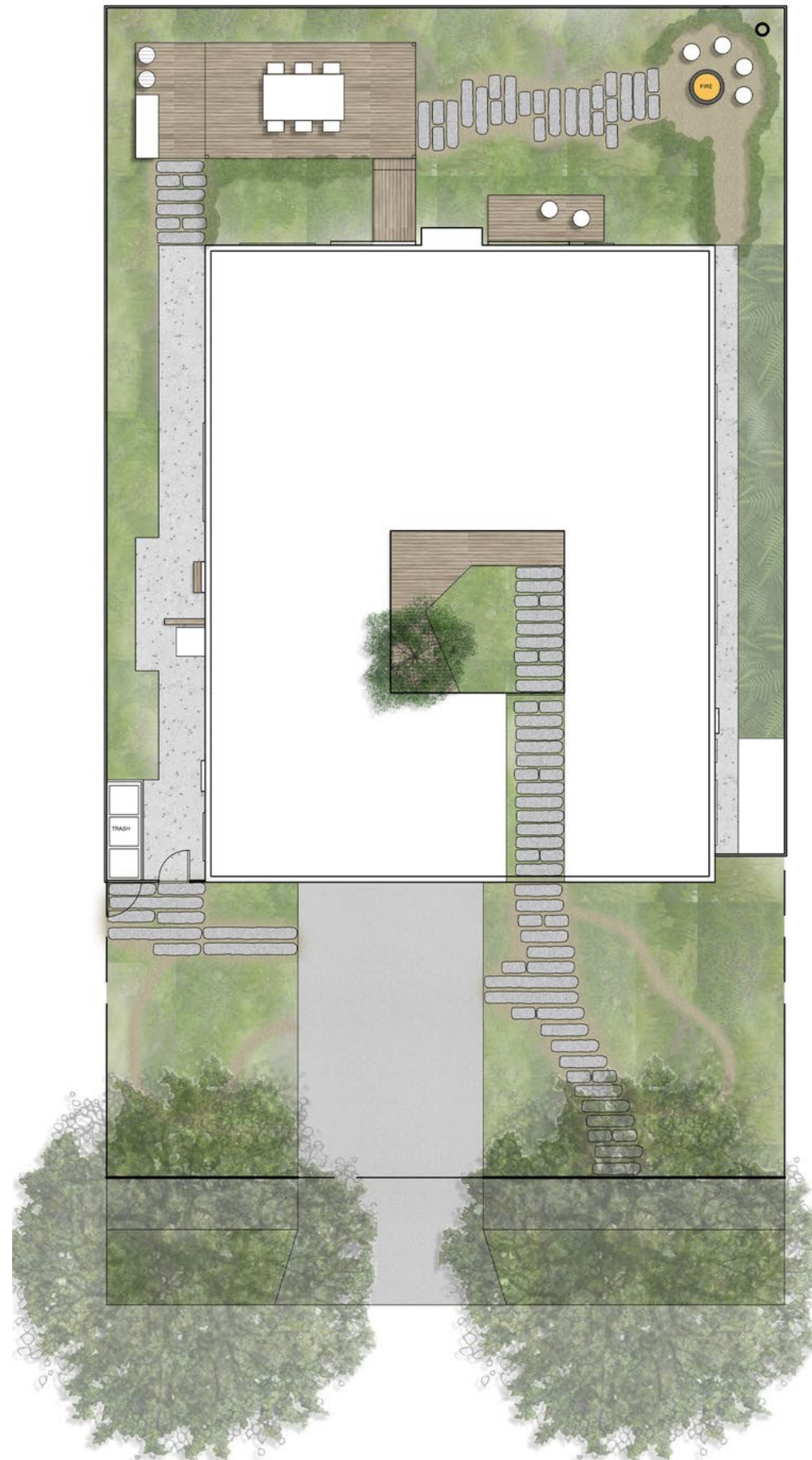














*Allium
sphaerocephalon*
Drum sticks



Monarda didyma 'Purple
Rooster' Bee Balm



*Achillea
millefolium* White
Yarrow



Penstemon 'Red
Rocks' Red Rocks
Penstemon



*Spartina
bakeri* Sand
Cordgrass



Leymus triticoides
'Lagunita' Lagunita Wild
Rye



*Diplacus
puniceus* Red
Monkey Flower



*Salvia
clevelandii*
Cleveland Sage



*Salvia
ulignosa* Bog
Sage



Eriogonum grande var.
rubescens Red Buckwheat



Juncus patens
Common Grey
Rush



Miscanthus 'Adagio'
Adagio Maiden
Grass



*Eryngium
planum* Sea
Holly



Armeria maritima
'Alba' White Flowered
Thrift



*Sesleria
autumnalis*
Autumn Moor
Grass

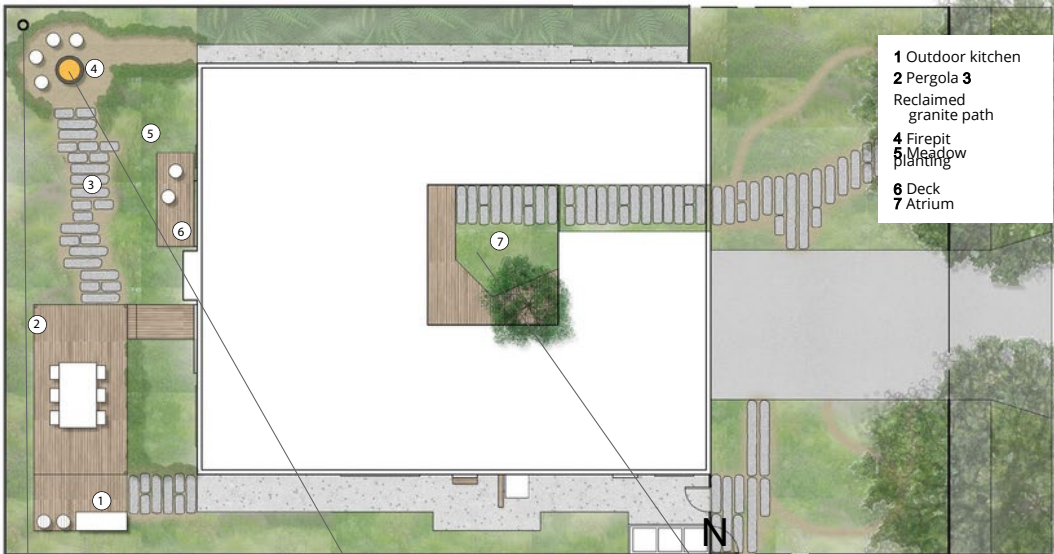


Grevillea
'Moonlight'
Moonlight Grevillea

DECEMBER	JANUARY	FEBRUARY	MARCH	APRIL	MAY	JUNE	JULY	AUGUST	SEPTEMBER	OCTOBER	NOVEMBER
<div><div><i>Allium sphaerocephalon</i> Drum sticks</div><div><i>Salvia uliginosa</i> Bog Sage</div><div><i>Salvia clevelandii</i> Cleveland Sage</div><div><i>Eriogonum grande</i> var. <i>rubescens</i> Red Buckwheat</div><div><i>Achillea millefolium</i> White Yarrow</div><div><i>Diplacus puniceus</i> Red Monkey Flower</div><div><i>Armeria maritima</i> 'Alba' White Flowered Thrift</div><div><i>Penstemon parryi</i> Parry's Penstem on</div><div><i>Monarda didyma</i> 'Purple Rooster' Bee Balm</div><div><i>Eryngium planum</i> Sea Holly</div></div>						         					
DECEMBER	JANUARY	FEBRUARY	MARCH	APRIL	MAY	JUNE	JULY	AUGUST	SEPTEMBER	OCTOBER	NOVEMBER

DESIGN INSIGHT

Essential elements



FENCES

The fences around the sides and back of the garden are cedar, to match the cladding of the outdoor kitchen, the pergola and the decking. "In one corner, there is an ugly utility pole," explains Sarah. "No matter what we did, this pole was going to be there. We couldn't hide it, so we decided to do something different and accentuate it. The fence is pretty simple everywhere else so it's nice to have this more graphic moment. It ties in with the idea of bringing angles to the structures in the garden."



FIREPIT

The firepit is the second 'destination' in the back garden, opposite the pergola and outdoor kitchen. It is a little tucked away, accessed via a meandering path. It is concrete and was made by the contractor. The exterior was sandblasted to soften its look. "The clients wanted something really simple," explains Sarah. "We went with the circular shape because with flexible furniture such as chairs, it's easier to manoeuvre yourself closer or further from the fire."



ATRIUM

The path in the front garden leads to the atrium, flanked by windows on two sides, and the front door. The atrium houses an angled cedar deck: "It's not a space for hanging out in but you could make a call or have a drink there," says Sarah. A hole in the deck has been cut for a single *Acer palmatum* 'Sango-kaku'. The space doesn't get much sun, so Sarah raised everything up to windowsill height, which also made it a really green area to look out on.



The layout

The goal for the clients' daughters to be able to roam in the garden ended up driving the entire design. "It didn't make sense to make it difficult to get to the dining deck or the outdoor kitchen, so the paths are more linear. But the areas that weave through the garden are a bit more organic," explains Sarah. "In this sense, the paths of granite pavers are staggered, shifting the paths a little bit, you give the plants room to grow into them so that you can weave around them. If everything were orthogonal, you would be able to see everything from every point, and in a small garden, it's important to avoid that. The plants in the meadow started out really small. I wasn't sure it would

actually grow in the way it did, but some of those plants are as tall as me. As you're walking through it, you are moving the bog sages out of the way, and it's a little bit overgrown. It gives the experience of meandering through and finding things. We used black basalt fines between the pavers and ended using that as the mulch material across the planting as well, so it all blends together. We left little voids in the planting as trails so that the girls could wander through the plants more closely. There is no definitive edge to the paths, which encourages exploration. Sarah adds: "A garden doesn't just have to be for kicking a ball. Kids use their imagination – they're creative in how they play and they work with what they're given. Having little trails through the tall plants encourages that same playful energy."

DESIGN INSIGHT



Outdoor kitchen

The outdoor kitchen is home to a barbecue, a fridge, a burner and a sink. “The clients needed to be able to use a wok – we measured it to get the sizing right – and wanted the burner to be sunken so that it is out of the wind,” explains Sarah. The contractor made the kitchen by constructing a fibreglass box with cutouts for each of the appliances, then clad the whole thing with cedar (the grill has an insulated jacket as cedar is, of course, a combustible material). The access doors beneath the grill and the sink have magnetic pushes so that there is no hardware on the outside, giving a sleeker look. The cedar is topped with a simple, grey, engineered stone countertop. “We do a lot of

outdoor kitchens, but it’s always something we struggle with,” admits Sarah. “They are always super-shiny. But this kitchen is actually one of my favourite elements in the garden.”

Pergola

The hard lines of the pergola echo the structure of the house and its roofline. The steel frame is painted black, and the cladding is cedar, which is also used widely around the garden. “We went through various iterations in terms of the cladding on the far side, to enclose it a bit more,” says Sarah. “In the end it didn’t make sense to do that, partly due to cost. It would also have felt more like a room, rather than being part of the garden.” Integrated lighting means that the family can use the area after dark.



Meadow planting

“We offered the clients two planting options for the meadow,” says Sarah. “One was a classic ‘Terremoto’ textural meadow, which is mostly grasses with a few floral elements. The other was a colourful, floral garden with soft perennials and grasses, which is what the clients chose.” The planting includes *Achillea millefolium*, *Monarda* ‘Purple Rooster’, *Monardella villosa* and *Salvia clevelandii*, woven together with grasses such as *Miscanthus sinensis* ‘Adagio’, *Festuca mairei* and *Sesleria autumnalis*. “The stars are the bright-pink *Penstemon x mexicali* ‘Red Rocks’ and the light-blue *Salvia uliginosa*. Pollinators love it and it adds a dynamic element to the planting – it moves in

the breeze. I threw in *Eryngium planum* ‘Blue Glitter’, not thinking much about it, but I’ve since been told it can be tricky to grow. In the back yard around the pergola we added some Australian plants, such as *Leucadendron* ‘Jubilee Crown’ and *Grevillea* ‘Moonlight’, to add height and soften the fence.” The colour palette is mostly pink, purple, blue and white, with pops of orange and red from *Diplacus aurantiacus*. “A colleague calls this colour scheme ‘California romantic’. It’s what makes this project really special.” The sharp seedpods of two existing sweetgum were rubbing car tyres, so were replaced with *Quercus palustris*.

USEFUL INFORMATION
Find out more about Terremoto’s work at [terremoto.co.uk](#)



LAND

listening first telling
stories of place



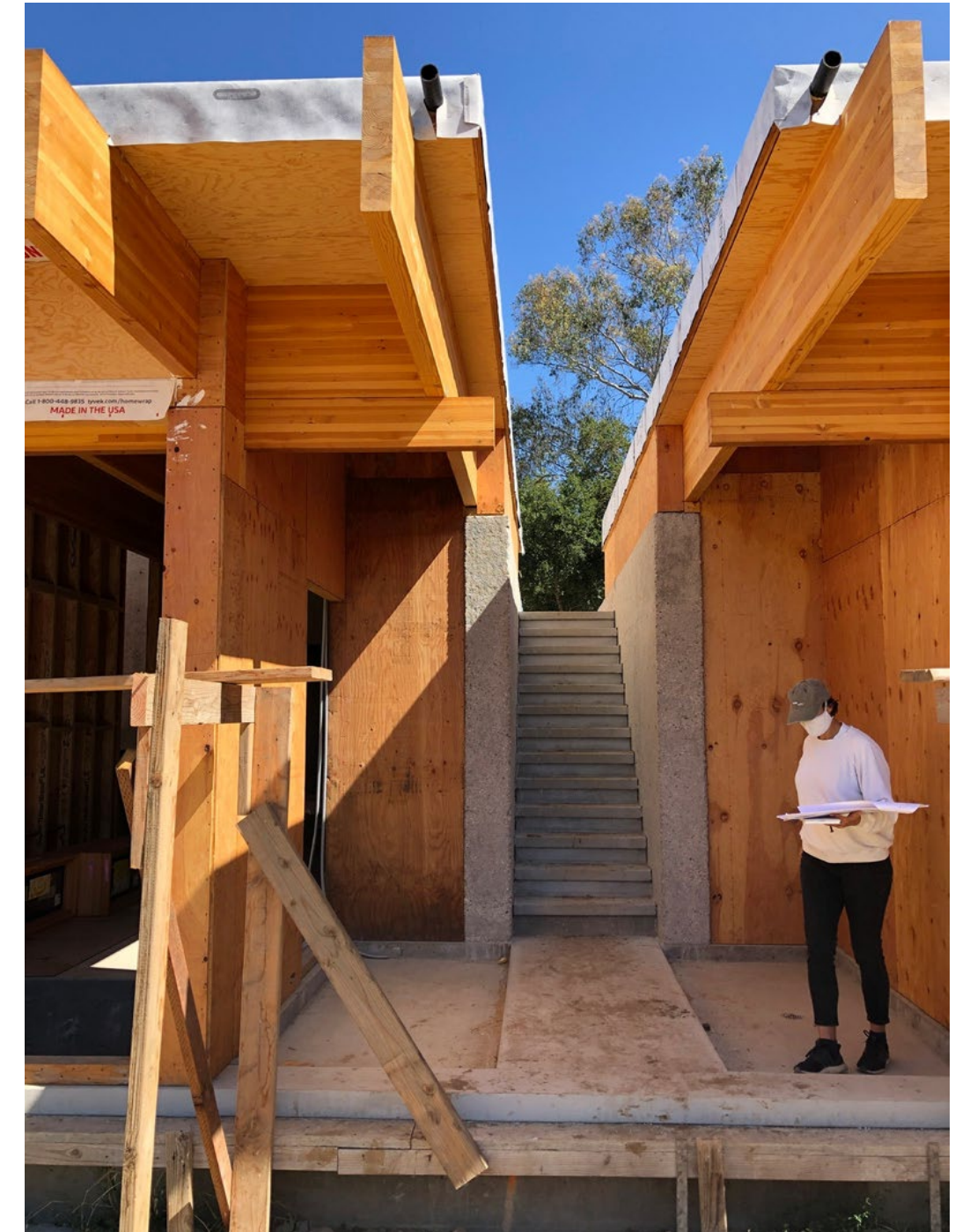


FOOTHILL
RESIDENCE
OJAI VALLEY



CREDIT: TRAVIS LONGCORE, ECOLOGICAL CONSULTANT

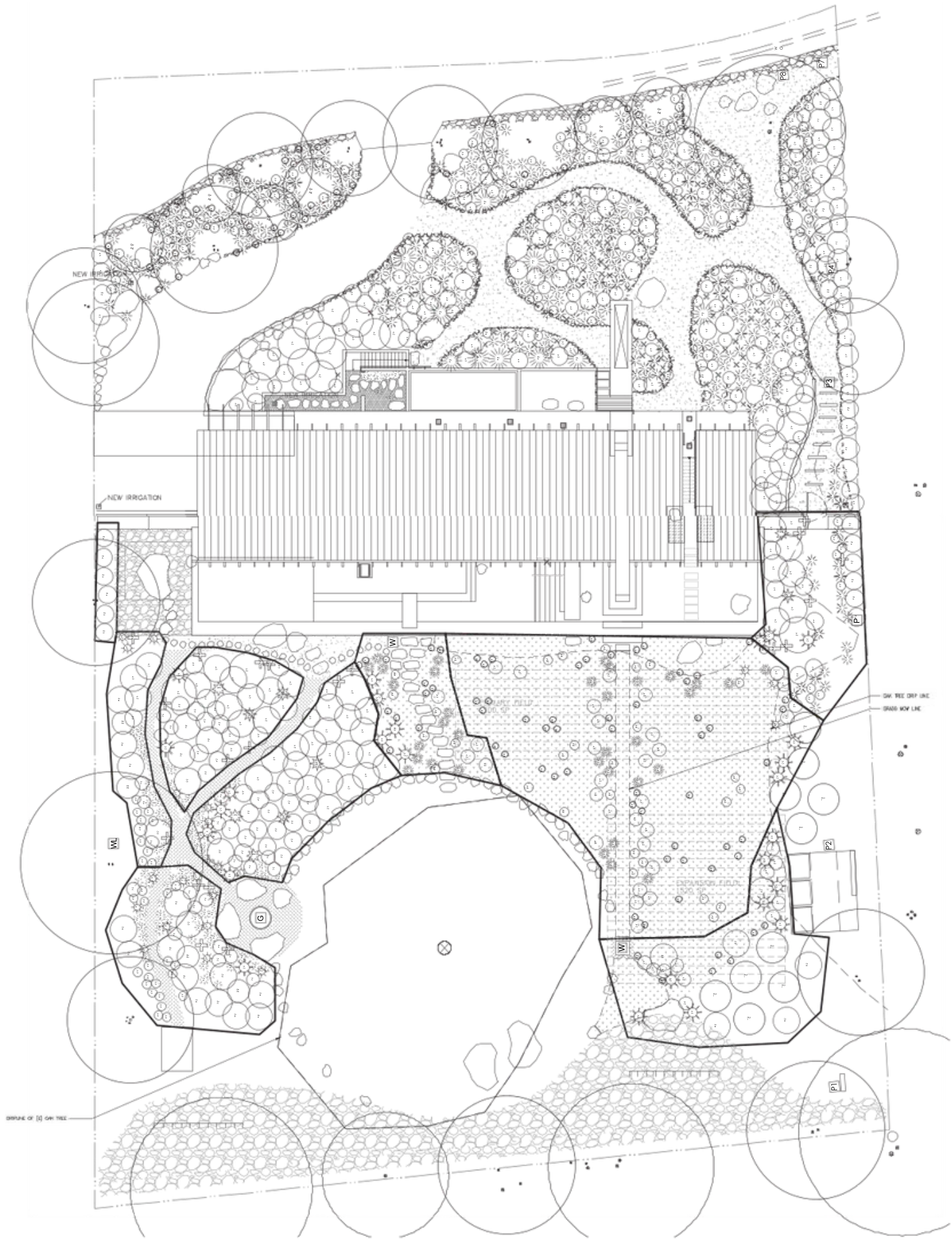
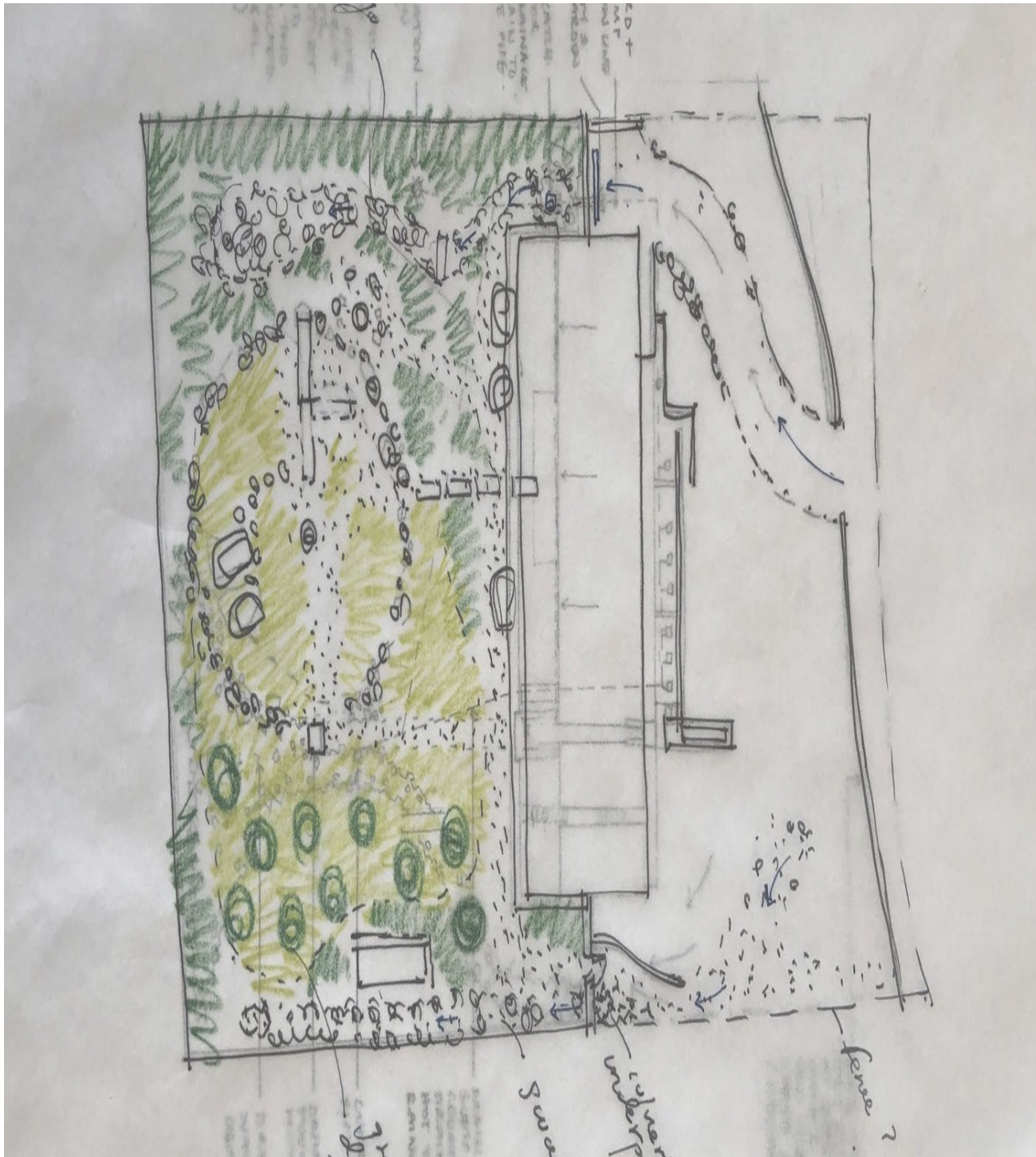




















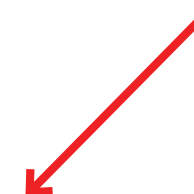
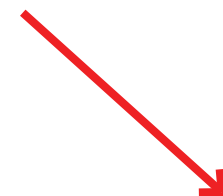




17TH STREET PLAZA PRIVATELY
OWNED PUBLIC SPACE DENVER



REGIONALLY SPECIFIC BOTANICAL
SIGNIFICANT NATURAL/SCULPTURAL
MATERIALITY









BUCHLOE DACTYLOIDES, BUFFALOGRASS



BOUTELOUA GRACILIS, BLUE GRAMA GRASS



DALEA PURPUREA, PURPLE PRAIRIE CLOVER

BOUTELOUA CURTIPENDULA,
SIDEOATS GRAMA

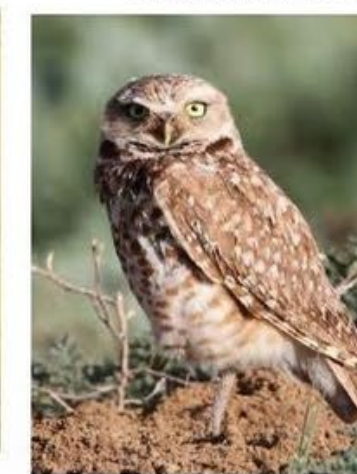
SCHIZACHYRIUM SCOPARIUM, LITTLE BLUESTEM



KRASCHENINNIKOVIA LANATA, WINTERFAT



SPOROBOLUS HETEROLEPIS, PRAIRIE DROPSEED

PENSTEMON GRANDIFLORUS,
LARGE FLOWERED BEARDTONGUE

BURROWING OWL



MOUNTAIN PLOVER

MCCOWN'S
LONGSPUR

FERRUGINOUS HAWK

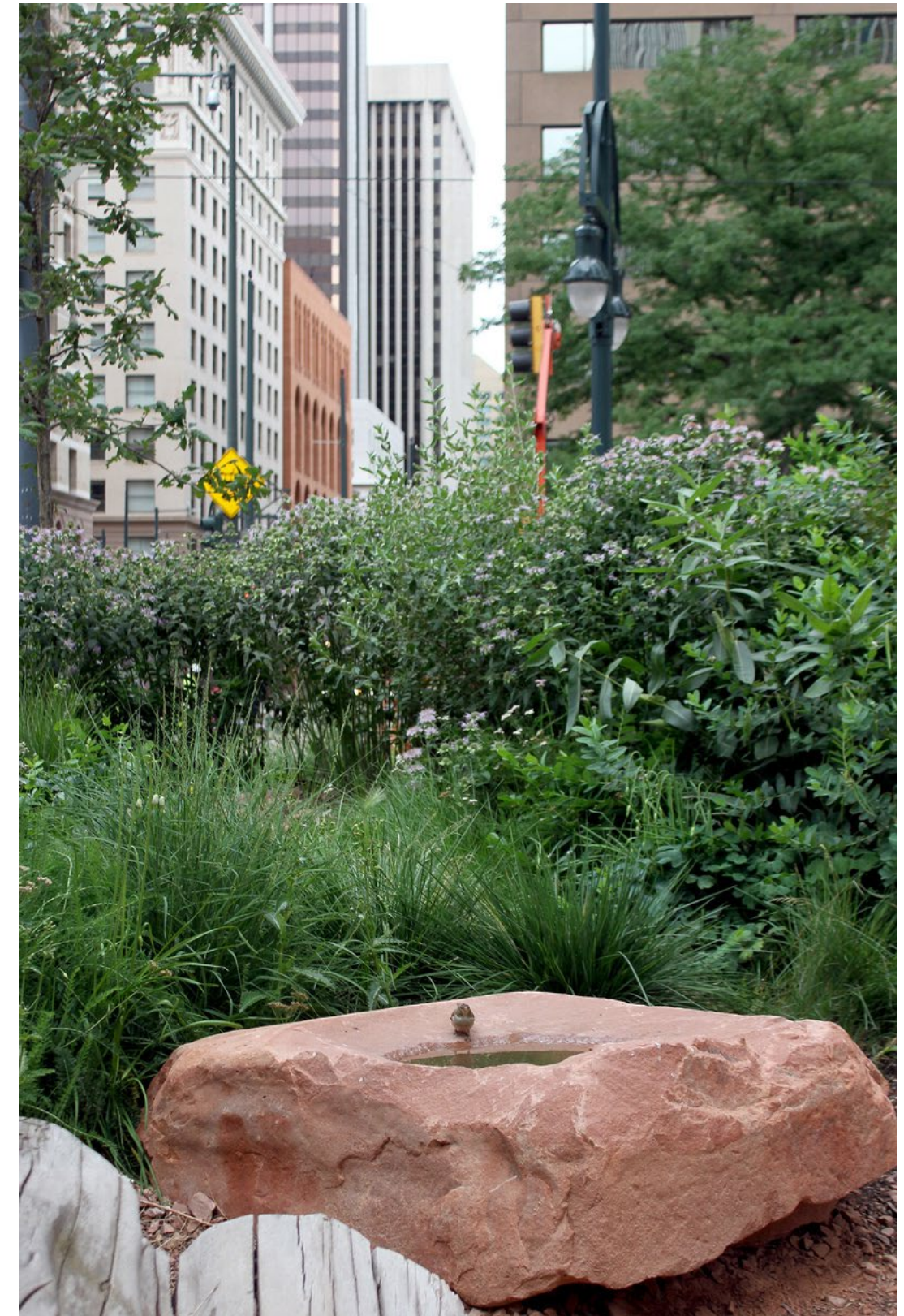














LABOR

valuing the work and the worker in
defense of wildness the
transformative power of land care





LAND & LABOR
INITIATIVE
EVERYWHERE





MICHELLE FRANCO : “Invisible Labor: Precarity, Ethnic Division, and Transformative Representation in Landscape Architecture Work”

Landscape Journal

DESIGN, PLANNING, AND MANAGEMENT OF THE LAND

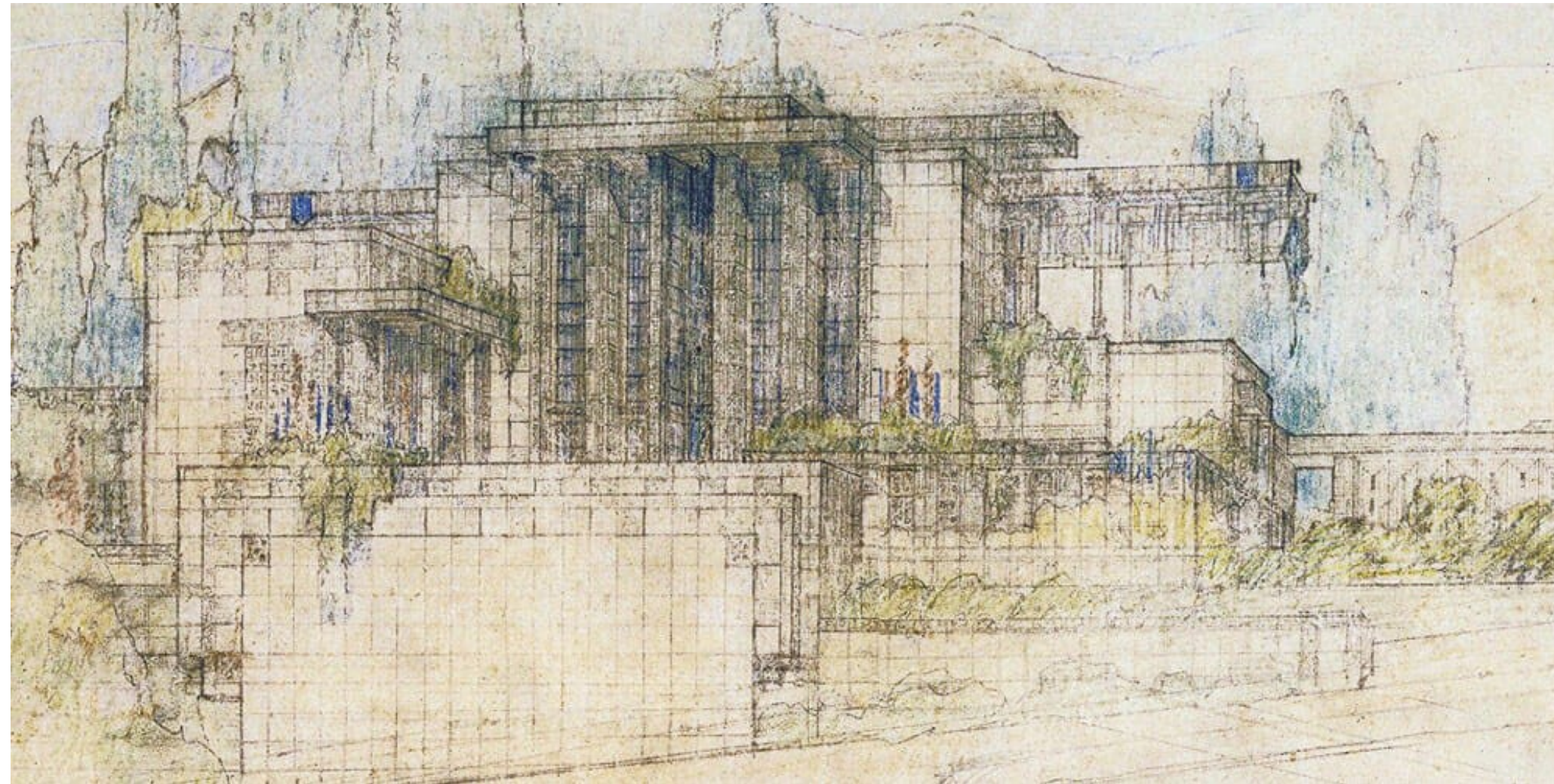


VOLUME 41 NUMBER 1 2022

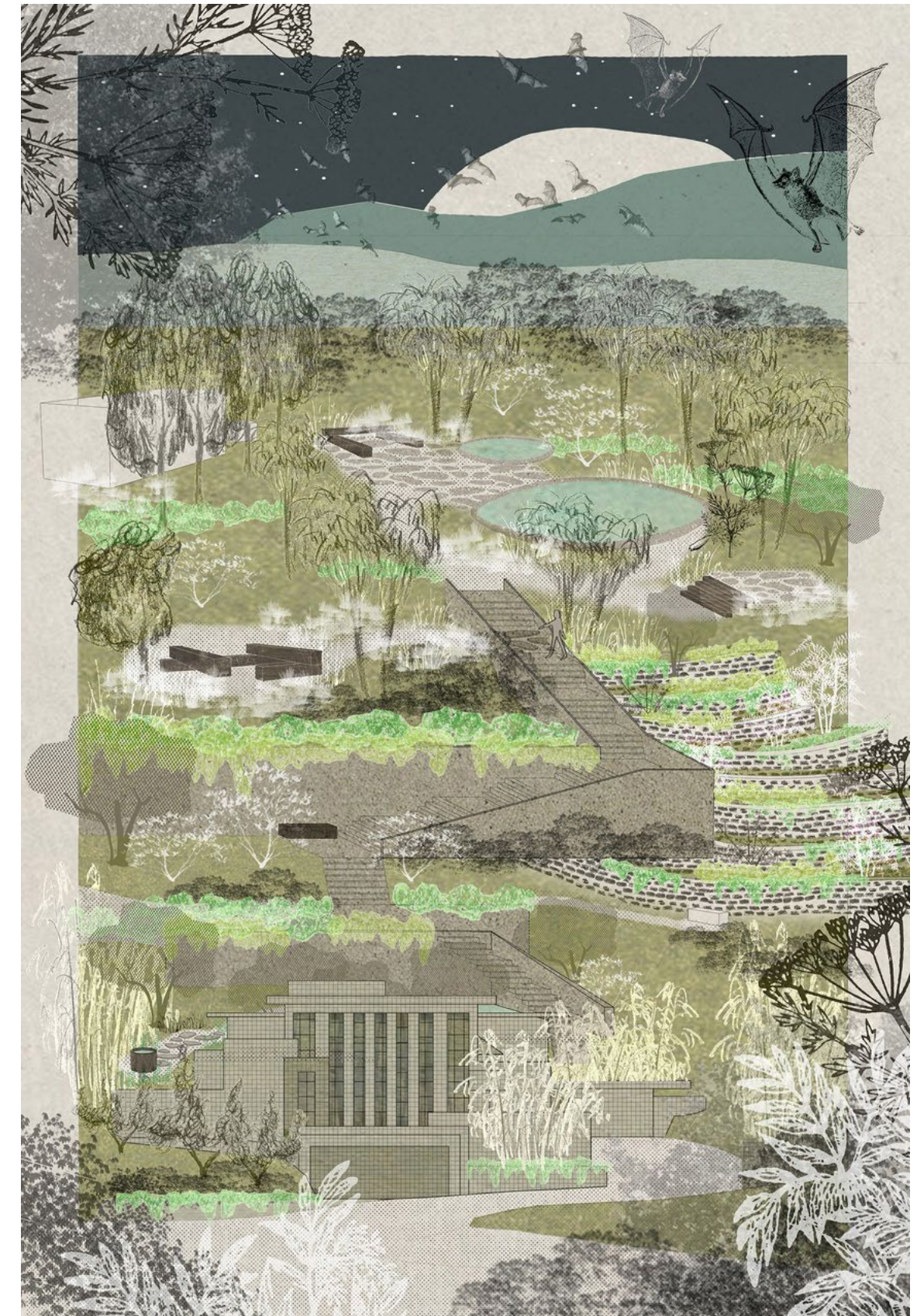




THE STORER HOUSE
RESIDENCE LOS
ANGELES



Frank Lloyd Wright,
1923











11/28/23



Uroleucon ambrosiae - Brown Ambrosia
Aphid on *Baccharis salicifolia* - Mulefat;
plant is still in good health; mulefat is one of
its host plants
Location: west garden

12/05/23



Uroleucon ambrosiae - Brown Ambrosia
Aphid on *Baccharis salicifolia* - Mulefat;
plant is still in good health; mulefat is one of
its host plants
Location: west garden



Evidence of *Vanessa virginiensis* -
American Lady Butterfly larvae making
larval nests (white fibrous material at
end of leaves) on *Pseudognaphalium
microcephalum* - Wright's Cudweed (its
host plant)
Location: west garden



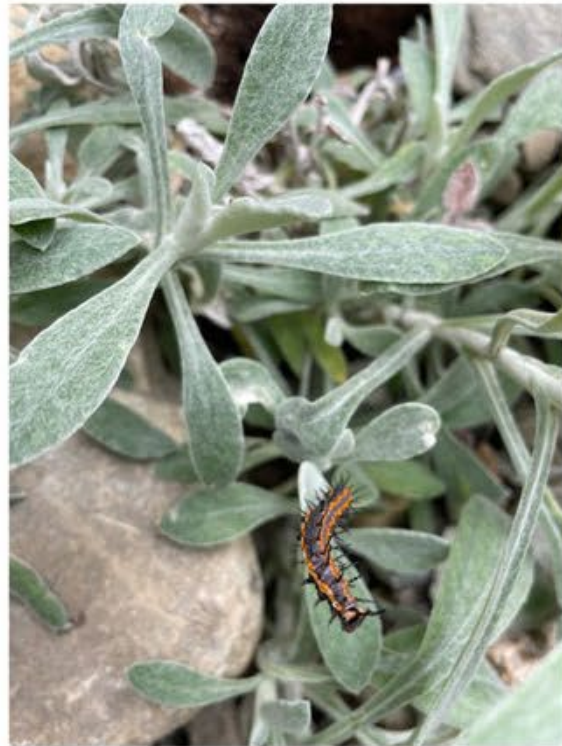
Galls made by *Aceria paracalifornica*
- California Sagebrush Gall Mite on
Artemisia californica - California
Sagebrush; deformed leaves, but plant
overall should be fine
Location: west garden



Danaus plexippus - Monarch Butterfly
crysallis after emerging
Location: front garden terrace



Vanessa virginiensis - American Lady
Butterfly chrysalis
Location: west garden



Agraulis vanillae - Gulf Fritillary Butterfly
larvae (its host plant is *Passiflora
incarnata* - Purple Passionflower Vine)
Location: west garden



Vanessa virginiensis - American Lady
Butterfly caterpillars and larval nesting
on *Pseudognaphalium microcephalum* -
Wright's Cudweed (its host plant)



Vanessa virginiensis - American Lady
Butterfly larval nest remnant + caterpillar
frass on *Pseudognaphalium microcephalum* -
Wright's Cudweed



Pseudognaphalium microcephalum -
Wright's Cudweed has bounced back
Location: west garden



Birds enjoying the water feature; presence
of guano
Location: west garden



Corridor created by wildlife
Location: west garden



Sceloporus occidentalis - Western Fence
Lizard
Location: west garden

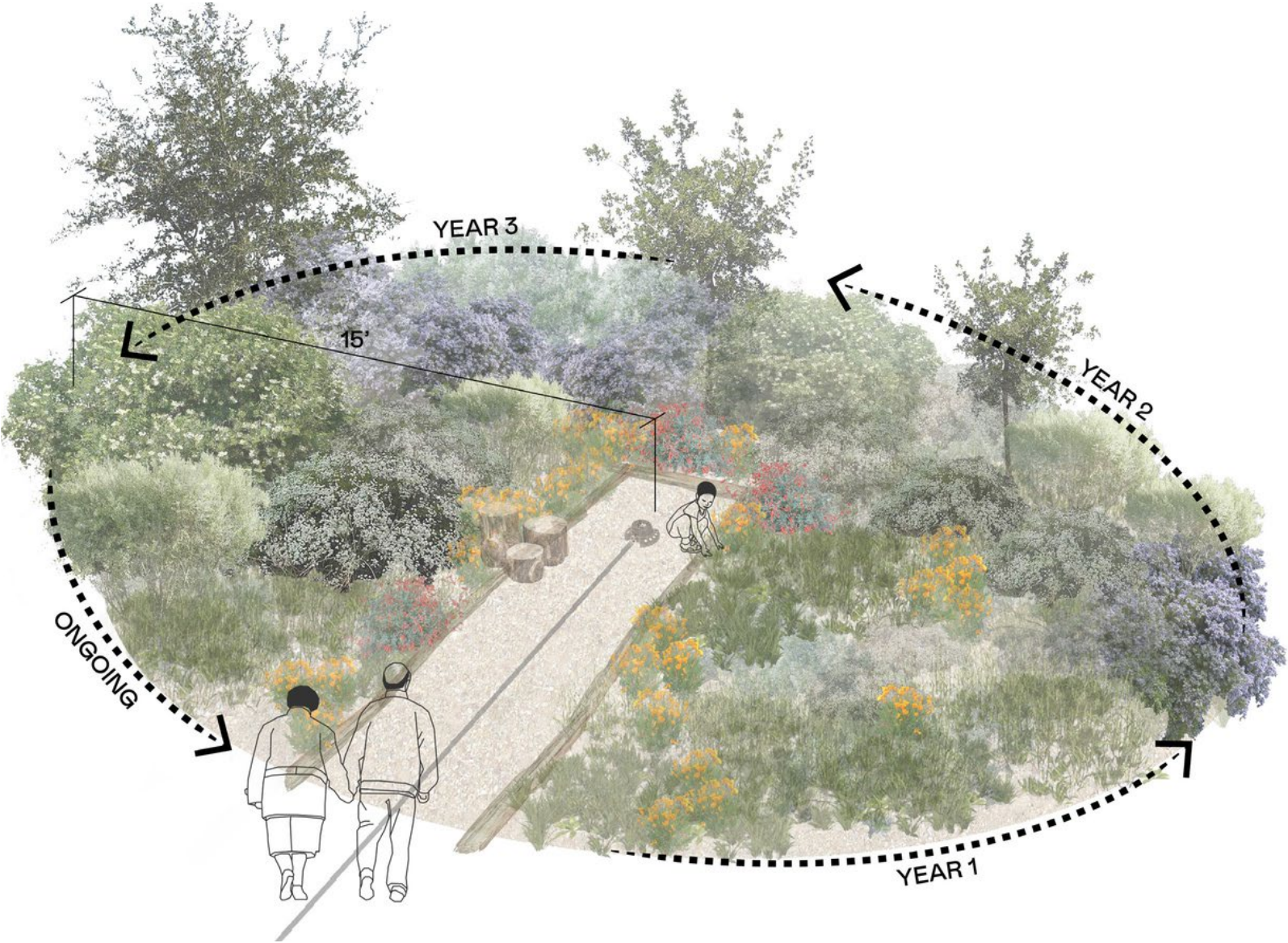
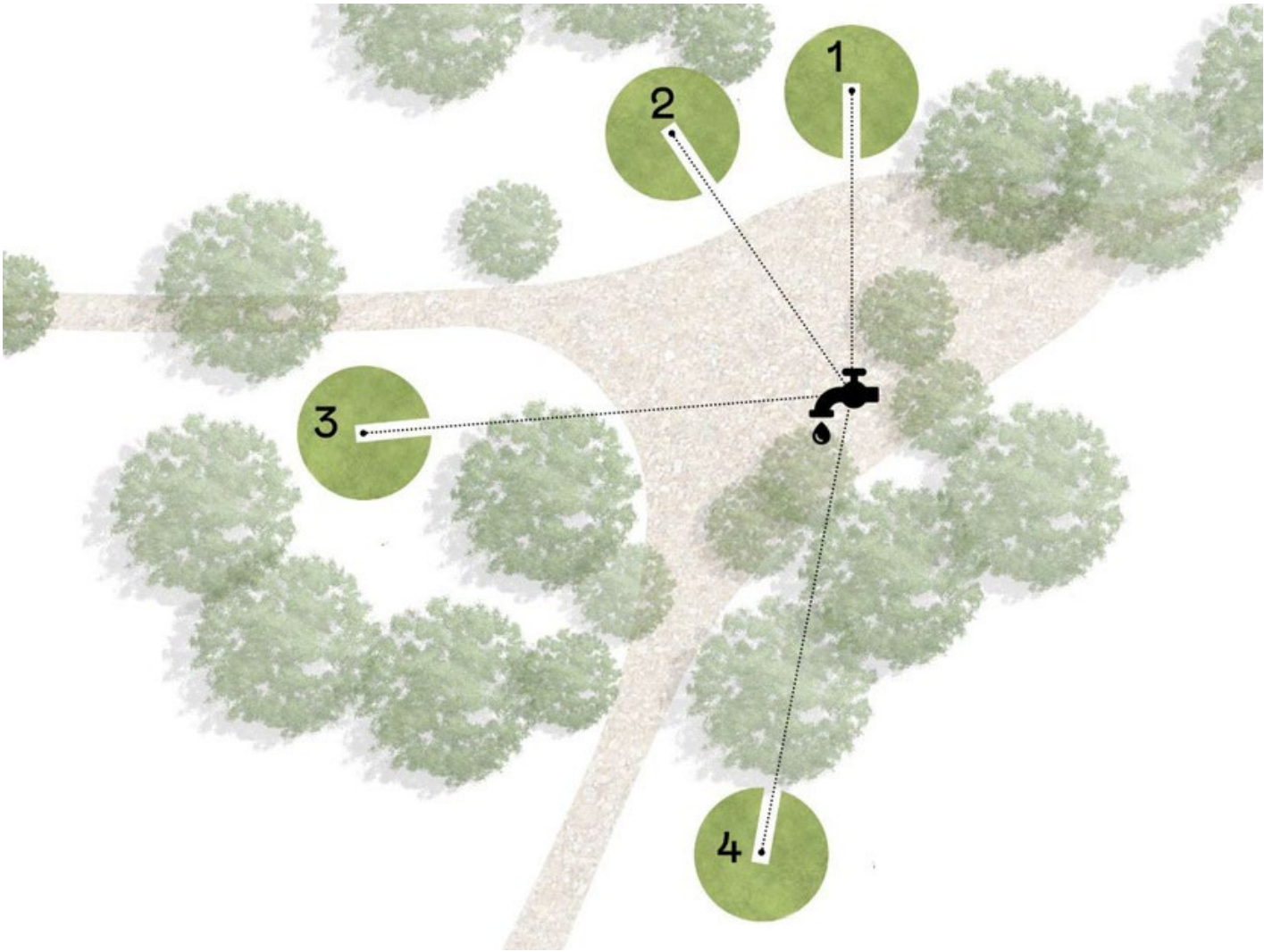








TEST PLOT DECENTRALIZED
EXPERIMENT ANYWHERE







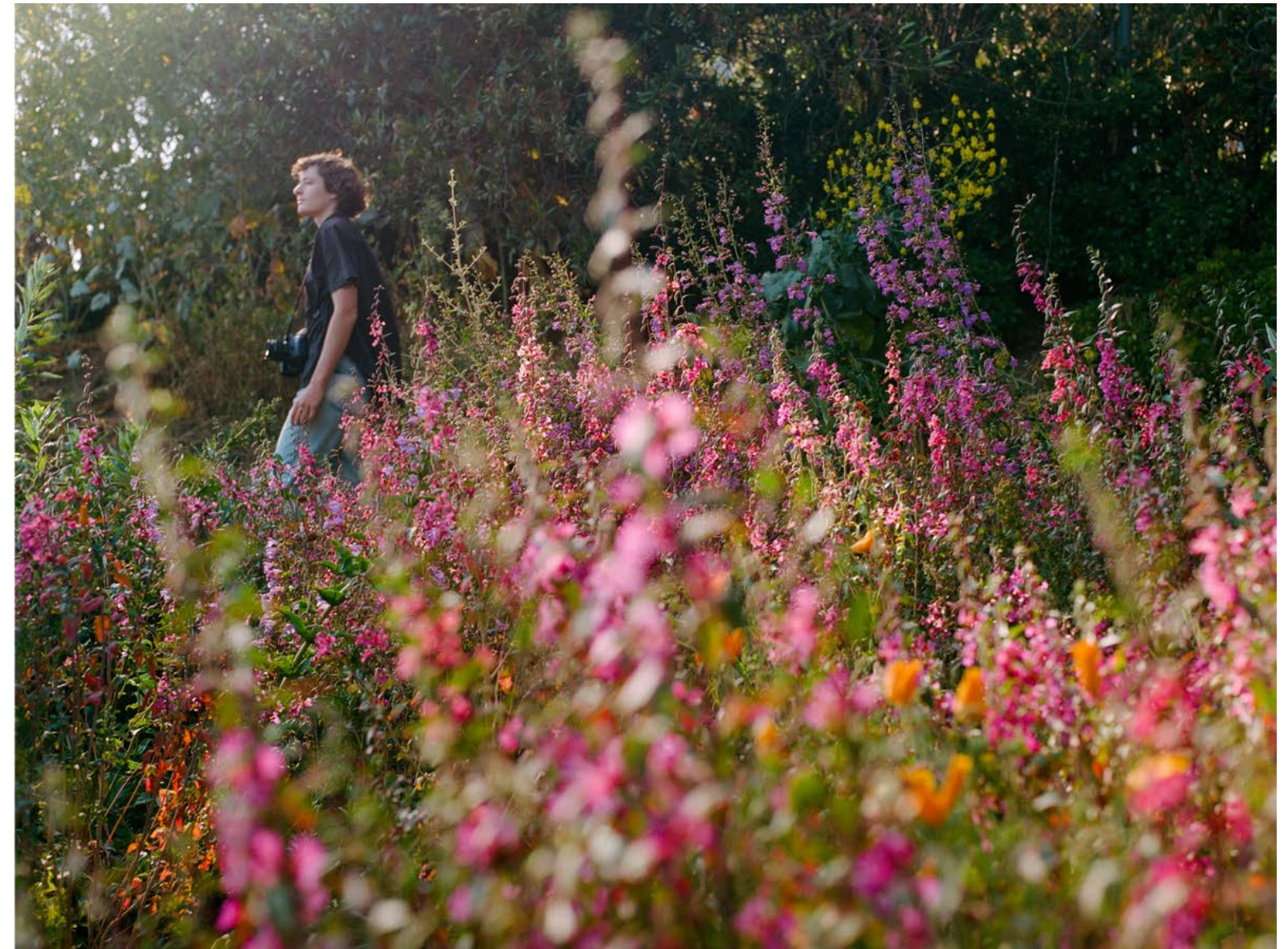










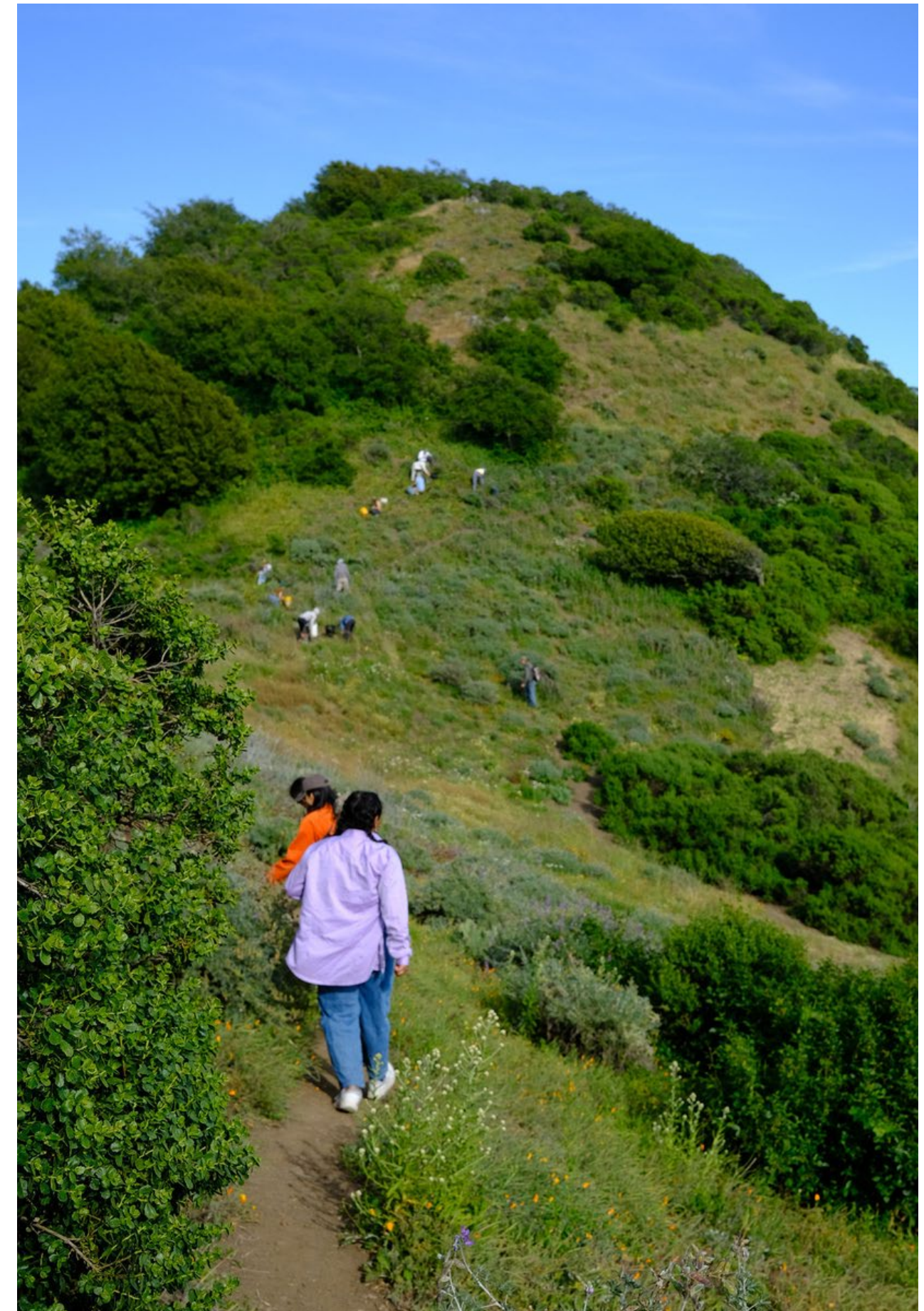








THE BRADLEY METHOD







THE BEAUTY IS IN THE ALIVENESS,
THE KINDNESS AND
SOFTNESS

THANK
YOU