

Welcome! Here's how to get set up on Zoom...

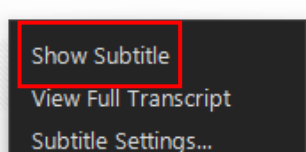
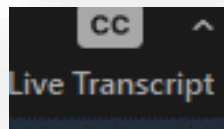
Join Computer Audio



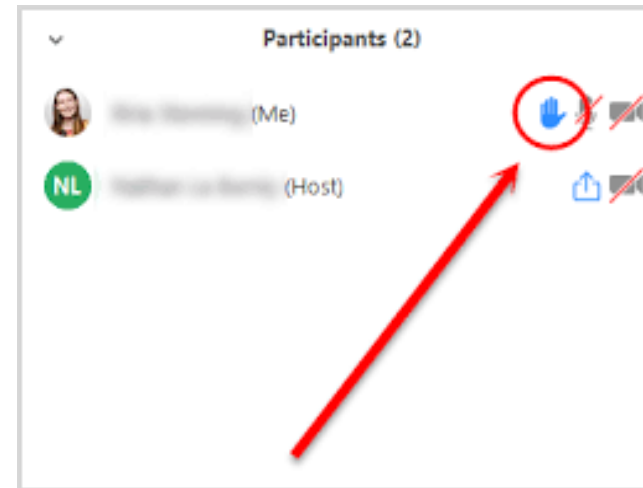
If internet unstable, use Phone Audio

- Check your invite/email for call-in number and meeting ID
- Dial call-in number: **1-669-900-9128**
- Enter webinar ID then #.

Enable Closed Captions/Live Transcript



Ask a Question

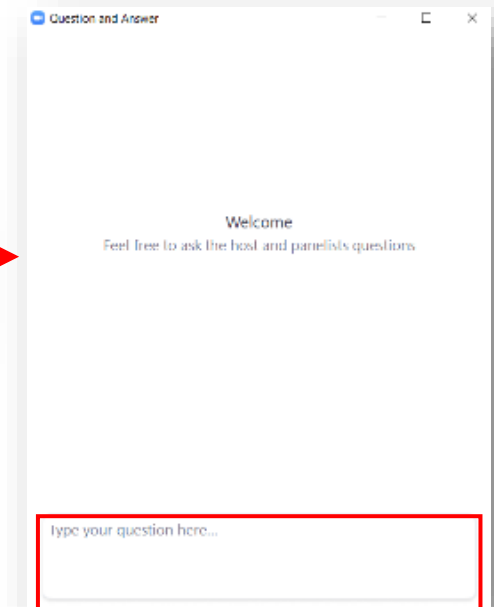


*After we enable your mic,
you have to unmute yourself before
you verbally ask your question.*

If only on phone:

*Press *9 to raise your hand if*

*Press *6 to mute/unmute yourself.*





US Army Corps
of Engineers



U.S. ARMY



Valley Water

Clean Water • Healthy Environment • Food & Energy



Coastal
Conservancy

South San Francisco Bay Shoreline (Sunnyvale) Feasibility Study Permanente Creek To Guadalupe River

Public Scoping Meeting

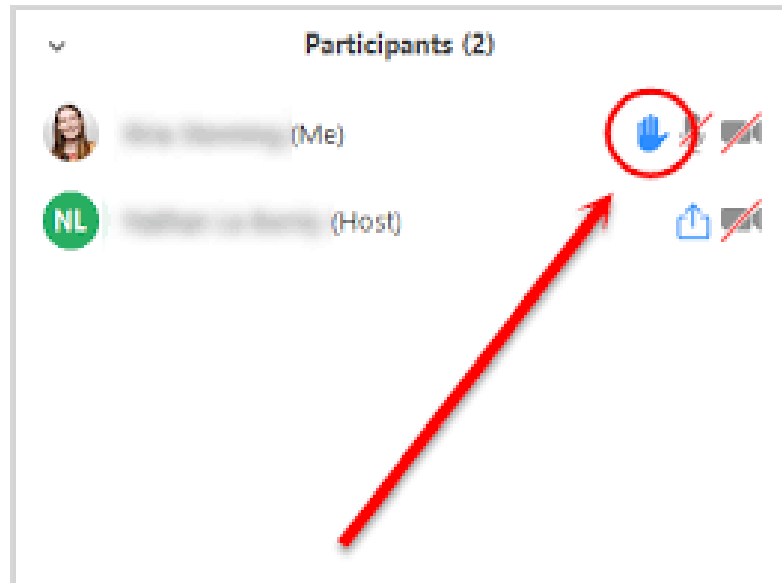
To learn more or share your ideas contact ShorelineStudy@usace.army.mil

Learn about the study area so that we can develop better solutions for flooding, ecosystem restoration and recreational access.

Meeting Structure

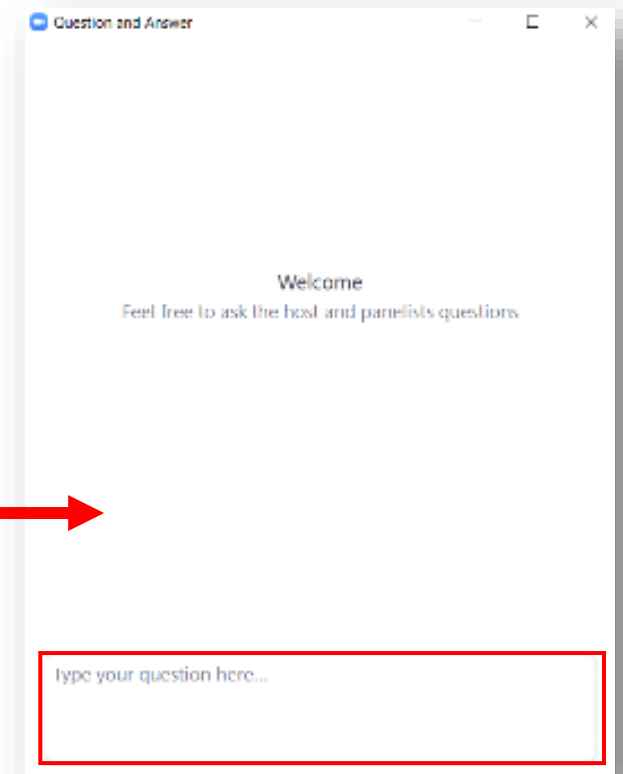
- | | |
|-------------|--|
| 6:00 – 6:40 | Introductions
Study Overview
How to Get Involved |
| 6:40 – 6:55 | Questions and Comments |
| 6:55 – 7:30 | Stations <ol style="list-style-type: none">1. Flooding2. Community Asset Mapping3. Environmental Considerations4. Comment Station |

Share questions and comments...



*After we enable your mic,
you have to unmute yourself before
you verbally ask your question.*

*If only on phone:
Press *9 to raise your hand if
Press *6 to mute/unmute yourself.*



Introductions



US Army Corps
of Engineers®



U.S. ARMY



Valley Water
Clean Water • Better Environment • Good People



Coastal
Conservancy

Project Team



Tessa Beach
Deputy Director of Project
Management, Planning Chief
USACE



Anne Baker
Environmental Planner
USACE



Lexi Karon
Environmental Planner
USACE



Michael Mercado
Project Manager
USACE



Stephanie Sahinoglu
Cultural Resources Lead
USACE



Neil Hedgecock
Program Manager
USACE



Shalini Kannan
Project Manager
Coastal Conservancy



Katie Muller
Project Manager
Valley Water



Erin Baker
Engineering Unit Manager
Valley Water

U.S. Army Corps of Engineers San Francisco District

Plan, design, and construct water resource projects

Permit construction along waterways and wetlands

Operate and maintain water supply and recreational facilities

Support state emergency management and response activities



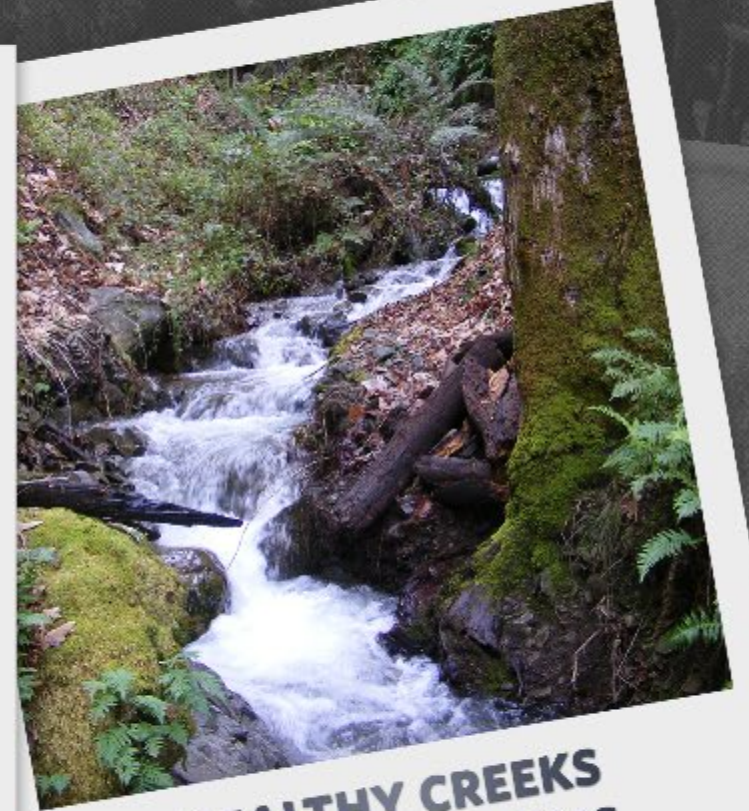
Valley Water provides:



CLEAN, RELIABLE WATER



FLOOD PROTECTION



**HEALTHY CREEKS
AND ECOSYSTEMS**



Coastal Conservancy

*The State Coastal Conservancy's vision is of a beautiful, restored, and accessible coast for current and future generations of Californians. **We act with others** to protect and restore, and increase public access to, California's coast, ocean, coastal watersheds, and the San Francisco Bay Area.*



Coastal Conservancy Work in the Area



SAN FRANCISCO
BAY AREA
WATER
TRAIL



Tell us about you!

What do you love about this community?

How long have you lived in the area?

What are you hoping to learn today?



Go to [Menti.com](https://menti.com)

Use code **44 71 90 3**

Study Overview



US Army Corps
of Engineers®



U.S. ARMY



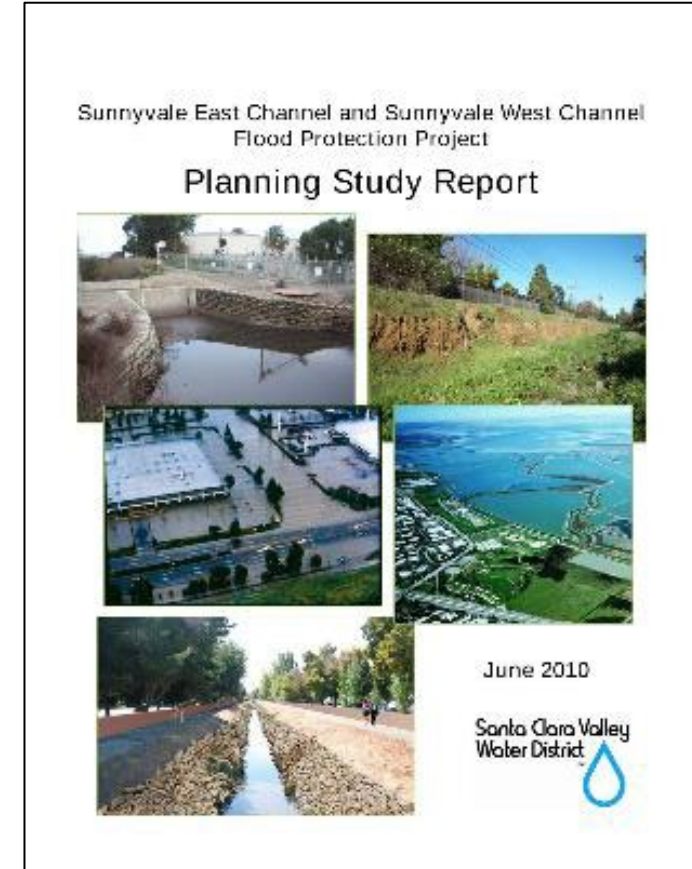
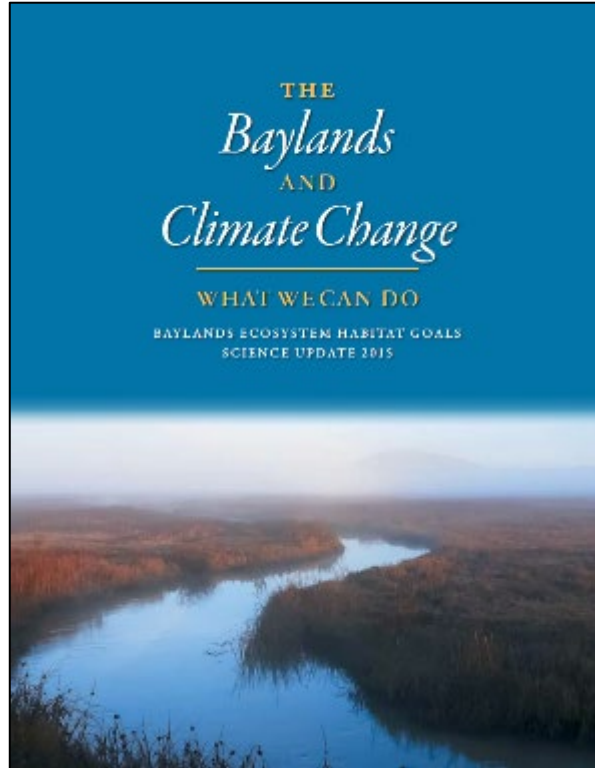
Valley Water
Clean Water • Better Environment • Good People



Coastal
Conservancy

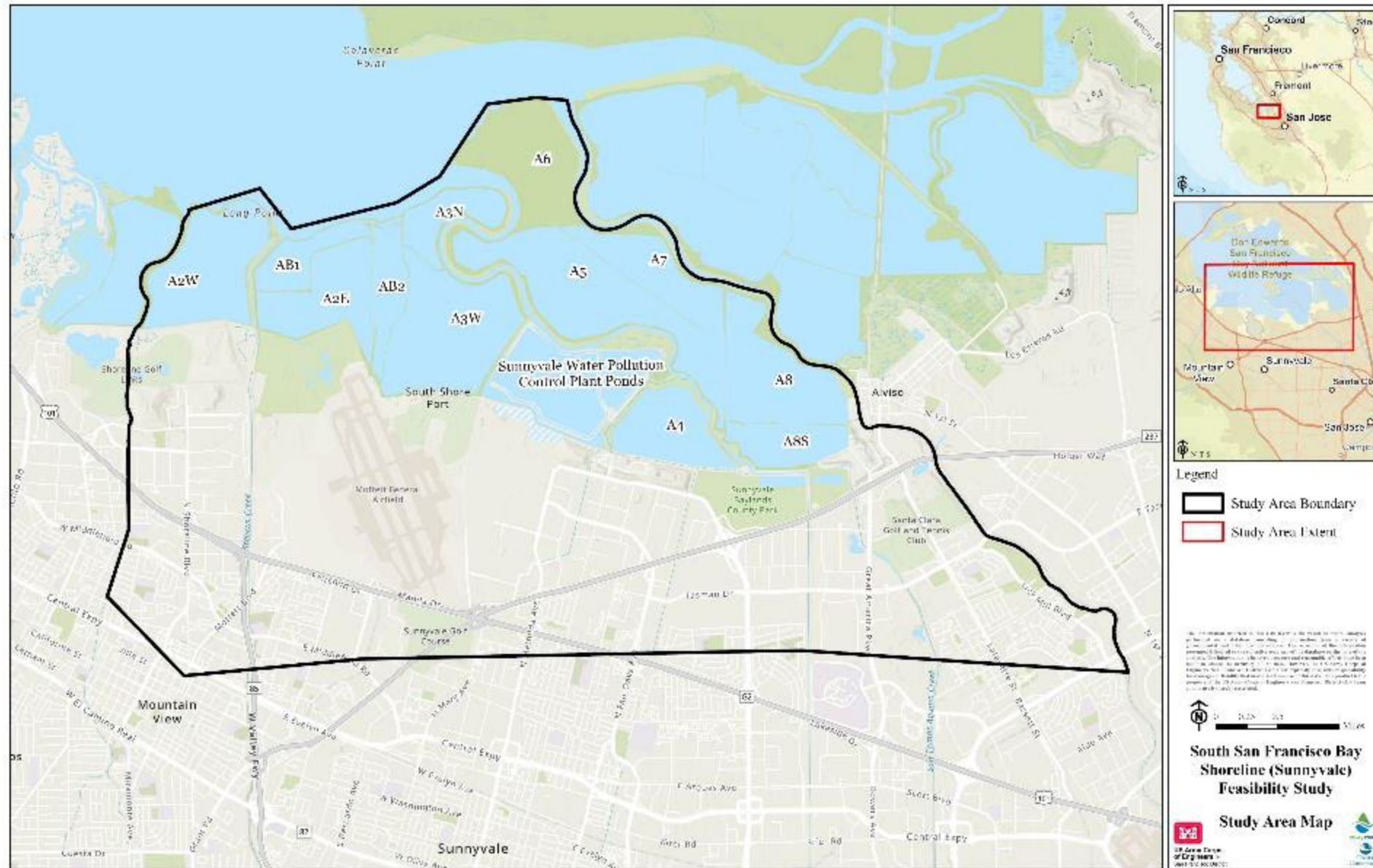


Related planning efforts



...and more

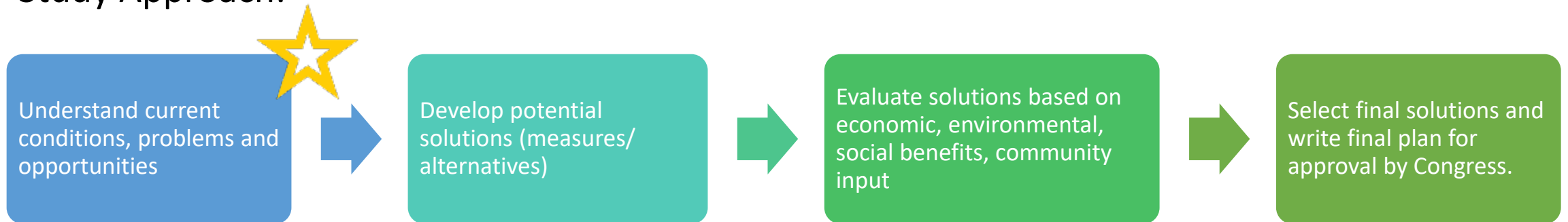
Where we live, work and play



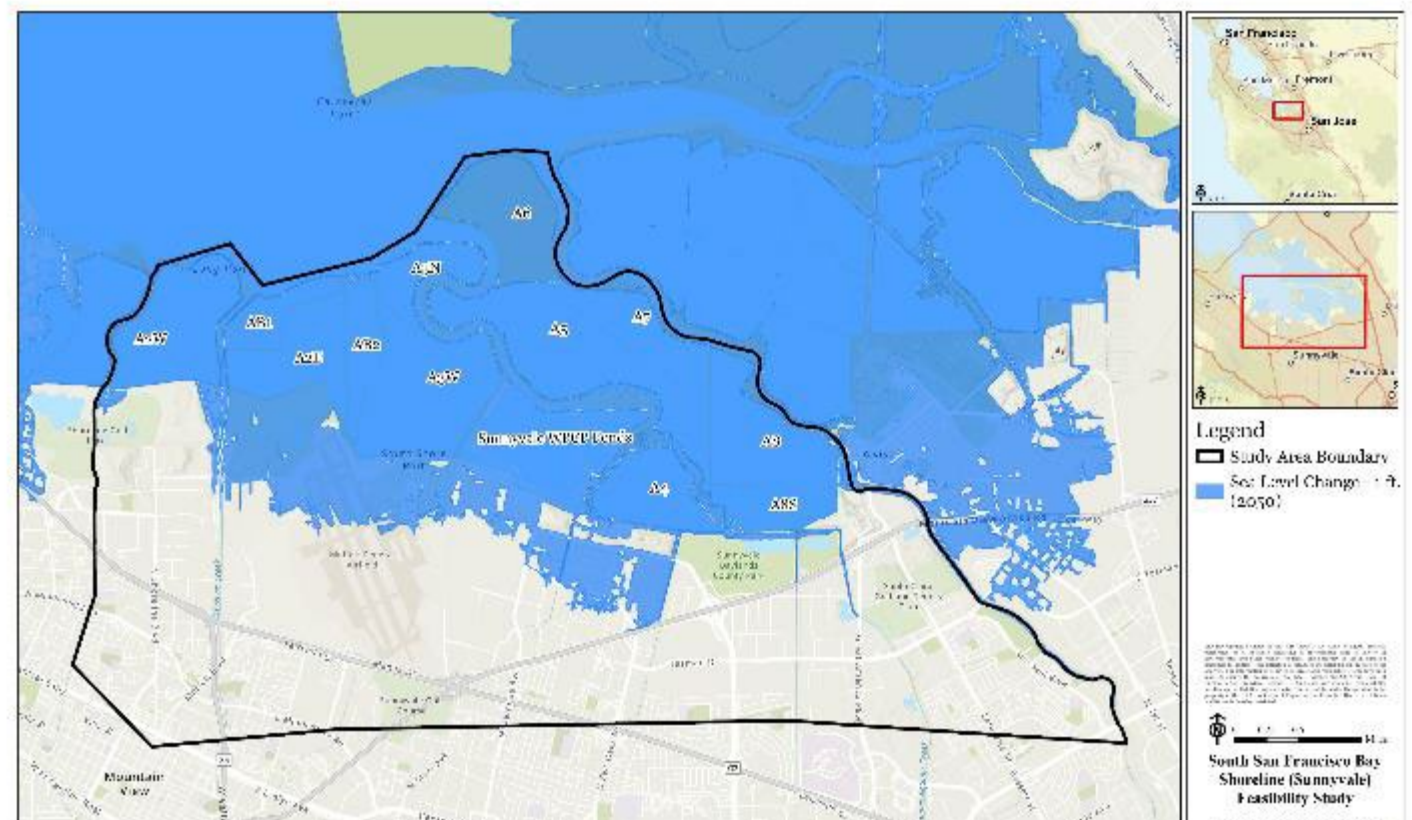
Study Approach

Study Purpose: A multi-purpose study examining **coastal flood risk management**, **ecosystem restoration**, and **recreational opportunities** from the Permanente Creek to the Guadalupe River, located in Sunnyvale, unincorporated Santa Clara County, portions of Mountain View and City of Santa Clara.

Study Approach:



Problem: Flooding



Sea levels are rising. Streets flood on sunny days. How can we prepare for a more watery world?

CLIMATE & ENVIRONMENT

Building with nature: Can reviving a marsh save this California town from sea level rise?

At COP28, Nature-Based Solutions are Needed to Combat Climate Change and Biodiversity Loss

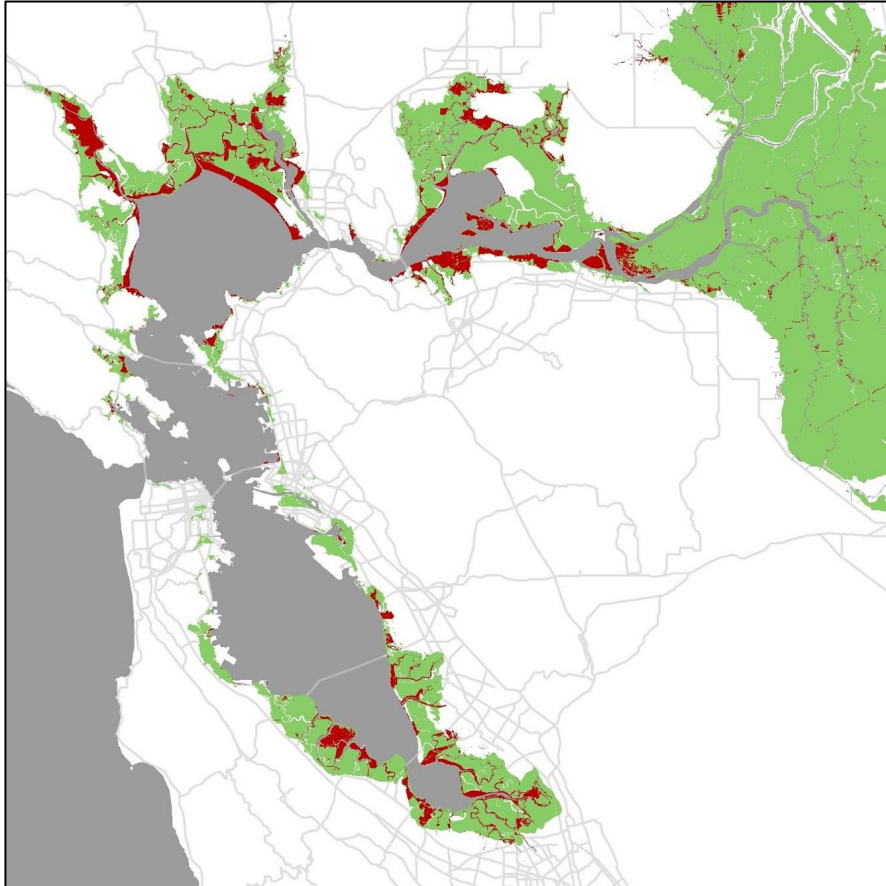
California just released a major new report on sea level rise. Here's how bad it could get

By **Tara Duggan**

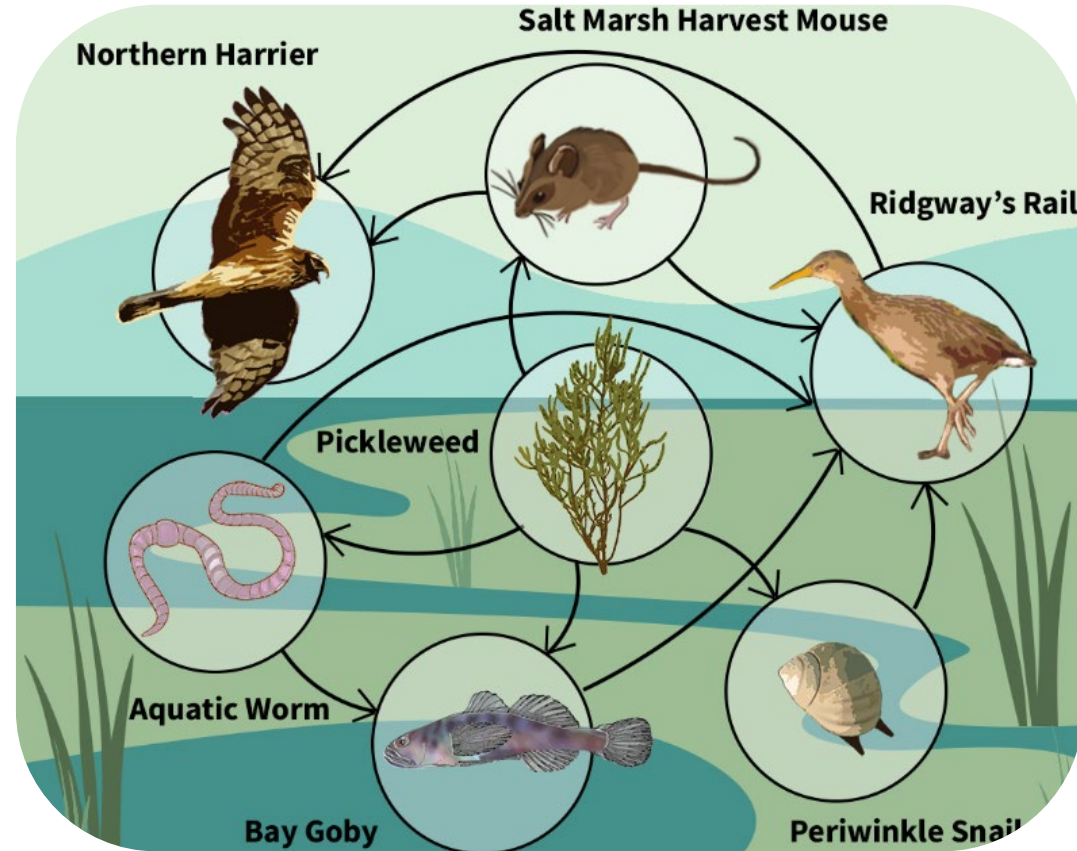
Jan 19, 2024



Problem: Habitat Loss

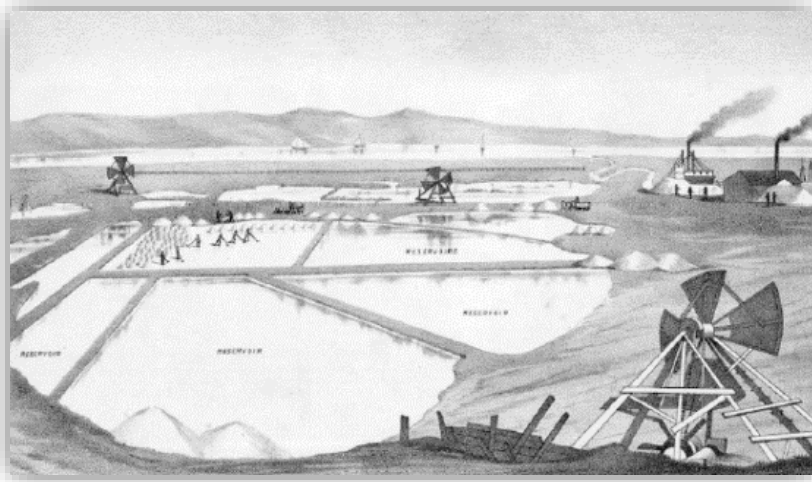


Tidal marsh loss over last 200+ years in the Bay Area and Delta. **Red is remaining tidal marsh habitat; green is historical distribution.**



<https://discoverwildcare.thinkific.com/pages/wetlands>

Salt Ponds



Historic Salt Ponds
Credit: South Bay Salt Pond Restoration Project



Newark, CA Salt Ponds
Credit: Cargill

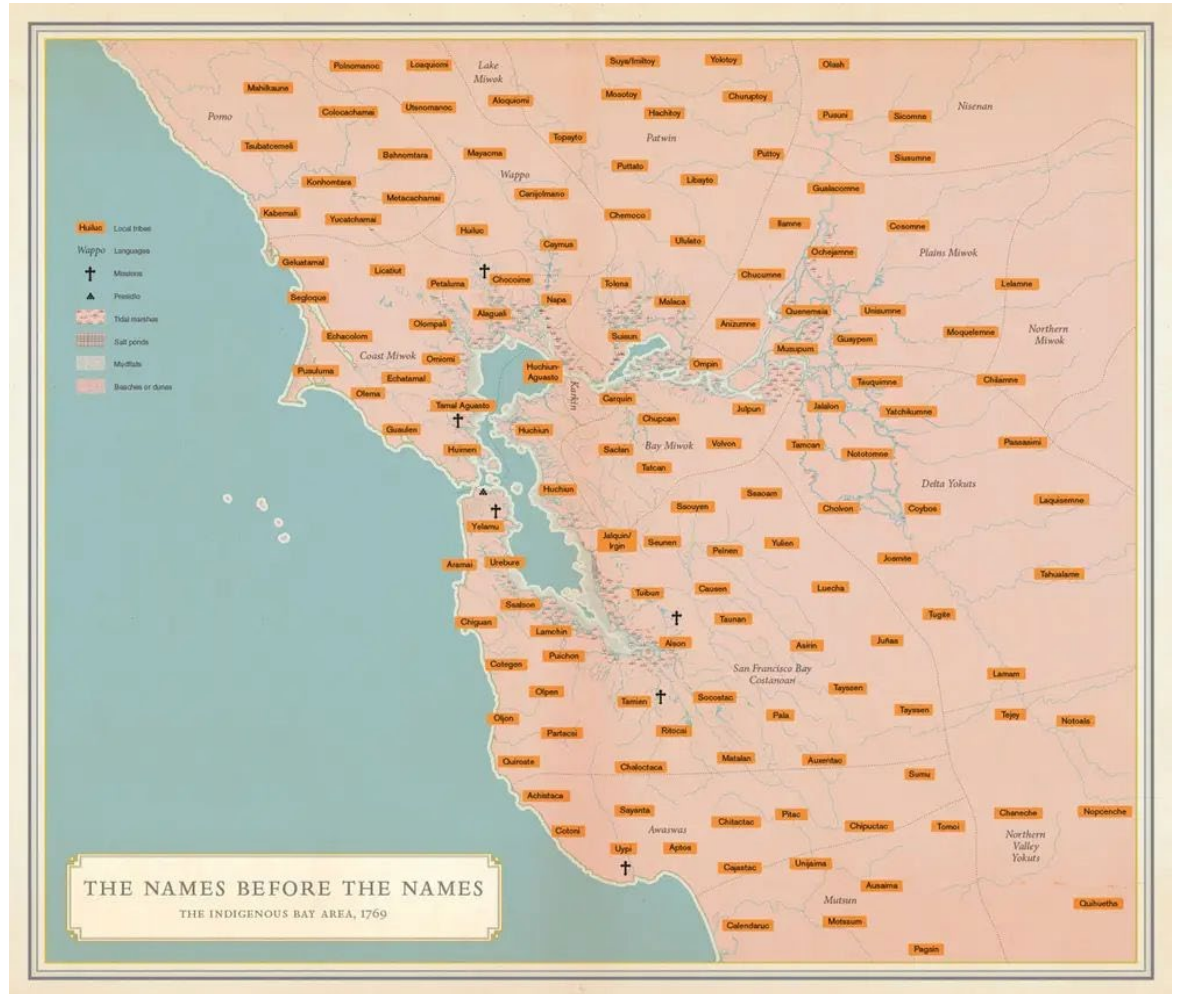


Restored Salt Ponds
Credit: South Bay Salt Pond Restoration Project

Consultation

USACE and Valley Water initiated consultation with Native American Tribes who have historical and cultural connections to the study area. Consultation will continue with Tribes, the public, historical organizations, and other interested parties.

- ❖ The Amah Mutsun Tribal Band
- ❖ Amah Mutsun Tribal Band of Mission San Juan Bautista
- ❖ Indian Canyon Mutsun Band of Costanoan
- ❖ Muwekma Ohlone Indian Tribe of the San Francisco Bay Area
- ❖ North Valley Yokuts Tribe
- ❖ Tamien Nation
- ❖ The Ohlone Indian Tribe
- ❖ The Confederated Villages of Lisjan
- ❖ Rumsen Am:a Tur:ataj Ohlone

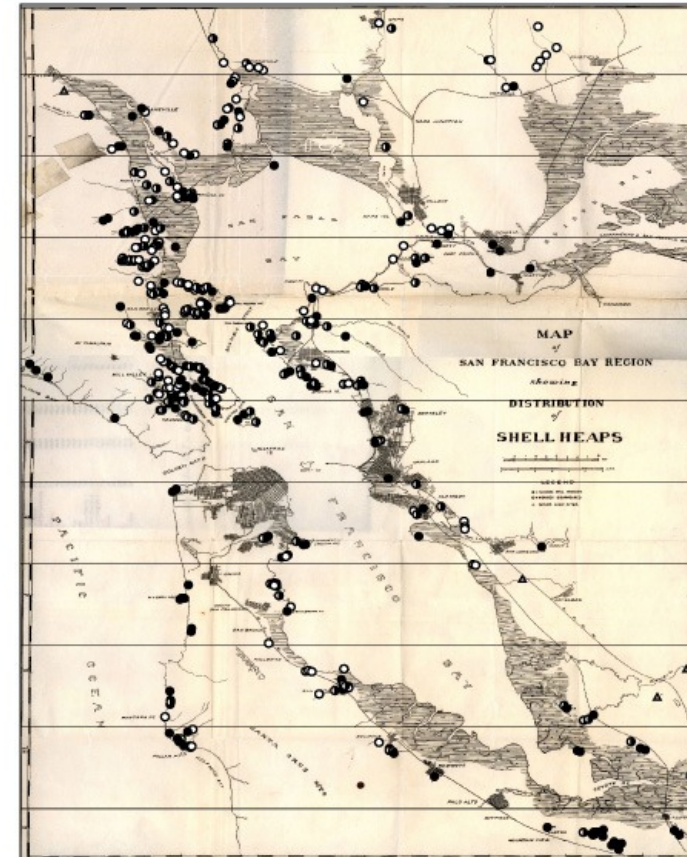


A map called "The Names Before The Names" shows the tribes, languages, and terrain in the San Francisco Bay area in 1769, the year of the first documented European visit to the Bay. From: "Infinite City: A San Francisco Atlas", by Rebecca Solnit. Cartography by Ben Pease.

Cultural Resources

- Review of past cultural resource reports identified numerous cultural resources in the study area.
- Likelihood for buried archaeology sites.
- Two historic districts are located within the project boundary, including the Alviso Salt Works Historic Landscape and the US Naval Air Station Sunnyvale Historic District, also known as Shenandoah Plaza.

Shellmounds in San Francisco Bay Area, 1909



During the first years of the twentieth century, University of California archaeologist N.C. Nelson mapped shellmounds still present around the shores of San Francisco Bay. Nelson published his map in 1909, showing over four hundred shellmounds ranging in size from a few meters in diameter to tens of meters in diameter.

An act of desperation in the face of rapid change, Nelson's map was hastily made and lacks precision. It is however a stunning reminder of the inhabitedness of San Francisco Bay: Thousands of years of native peoples living in and changing San Francisco Bay.

Shell Mounds and Camps

- ▲ Camps
- Disappeared, Mounds
- ◐ Partially Present, Mounds
- Fully Present, Mounds

Opportunities

Develop landscape features and infrastructure that provide multiple benefits at once:

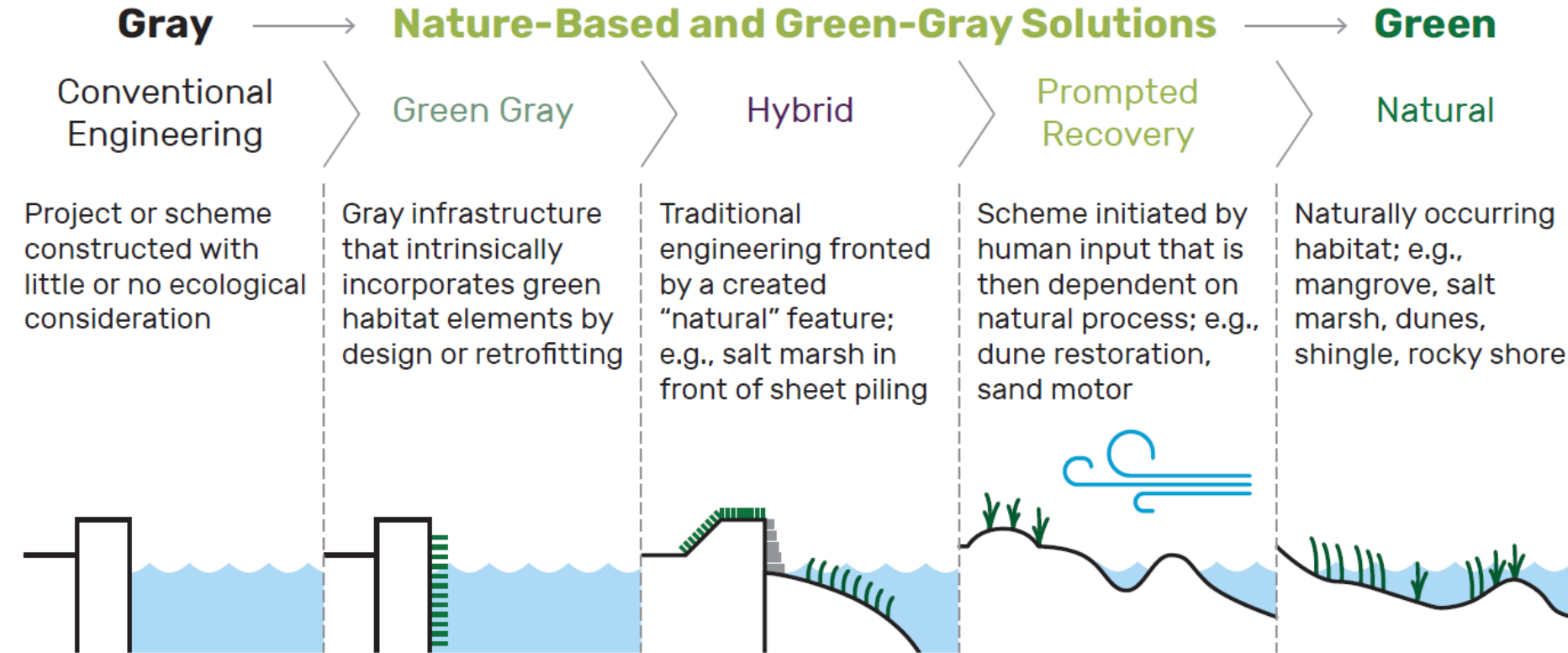
- Flood protection
- Restore salt marsh
- Improve public access and recreation
- Build regional climate resilience



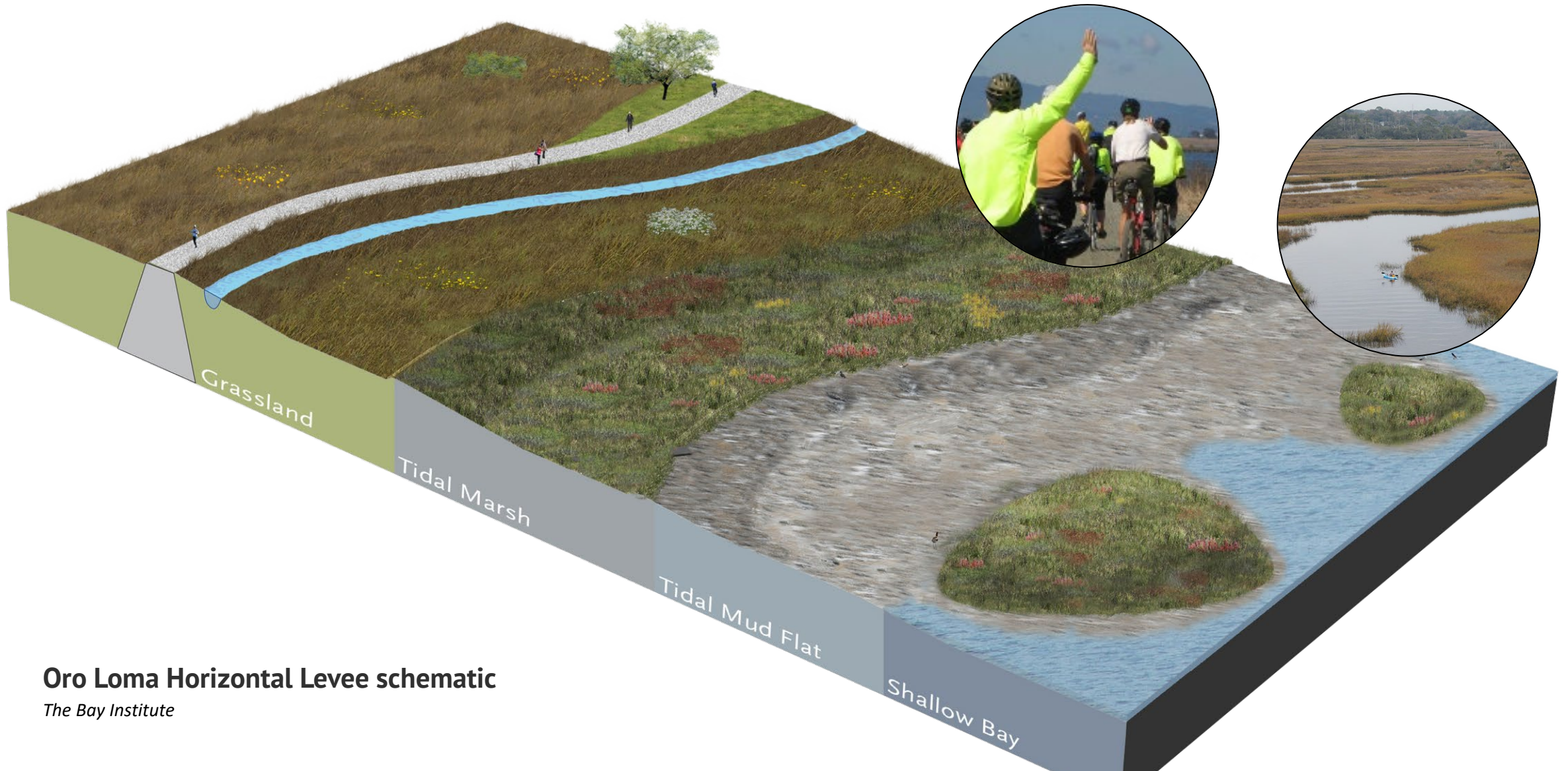
Shoreline Park, Mountain View, CA



Nature-Based Solutions



Nature-based solutions provide multiple benefits



Oro Loma Horizontal Levee schematic

The Bay Institute

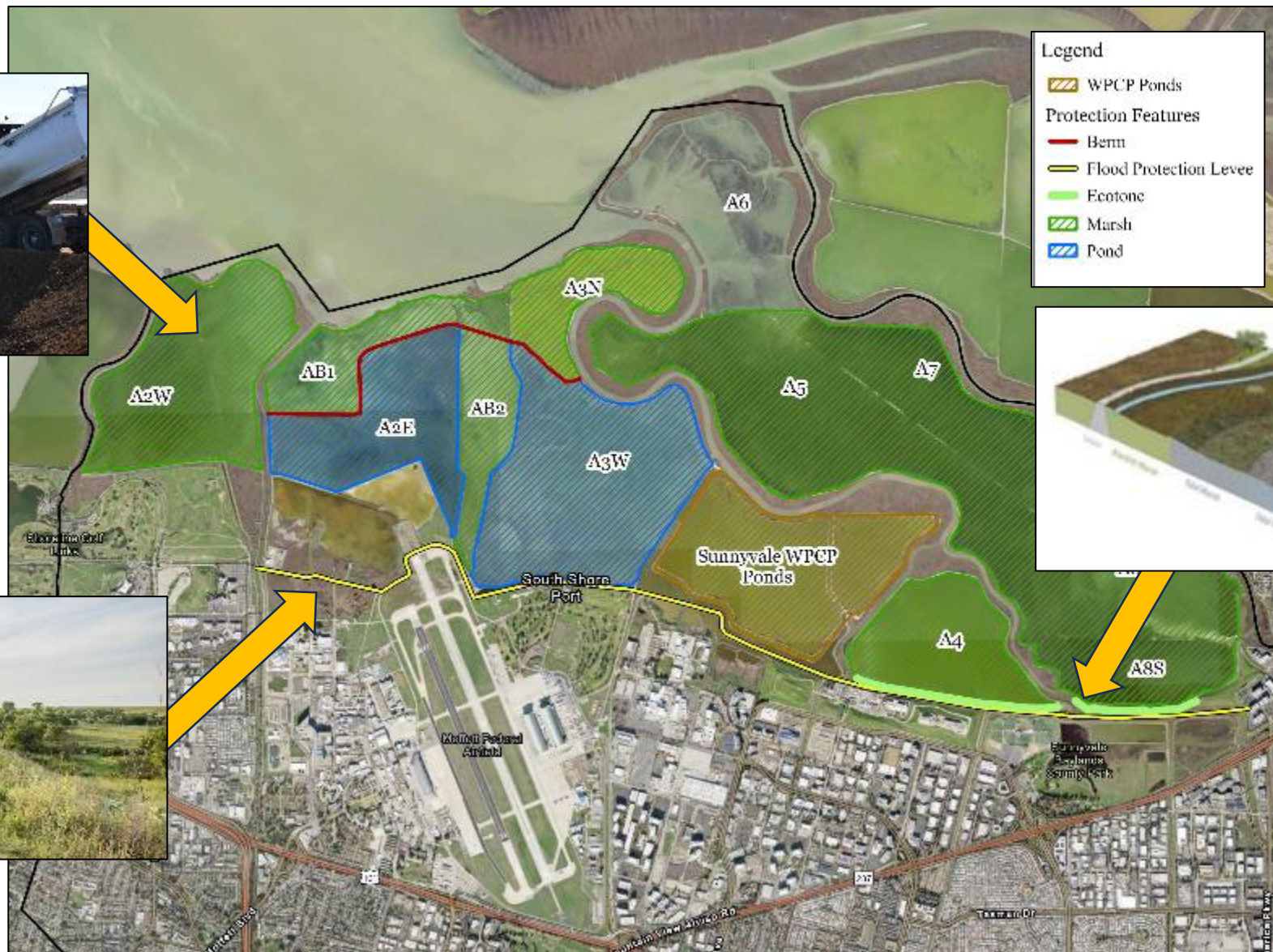
Possible Solutions



Marsh Restoration



Flood Protection
Levee



Horizontal
Levee

Partners

- Bay Area Air Quality Management District (BAAQMD)
- Bay Conservation and Development Commission (BCDC)
- California Department of Fish and Wildlife (CDFW)
- California State Water Resources Control Board – Region 2
- City of Mountain View
- City of Santa Clara
- City of Sunnyvale
- Mid-Peninsula Regional Open Space District
- NASA
- National Marine Fisheries Service (NMFS)/NOAA
- South Bay Salt Pond Restoration Project
- State Historic Preservation Office (SHPO)
- U.S. EPA
- U.S. Fish and Wildlife Service

How to Get Involved!



US Army Corps
of Engineers®



U.S. ARMY

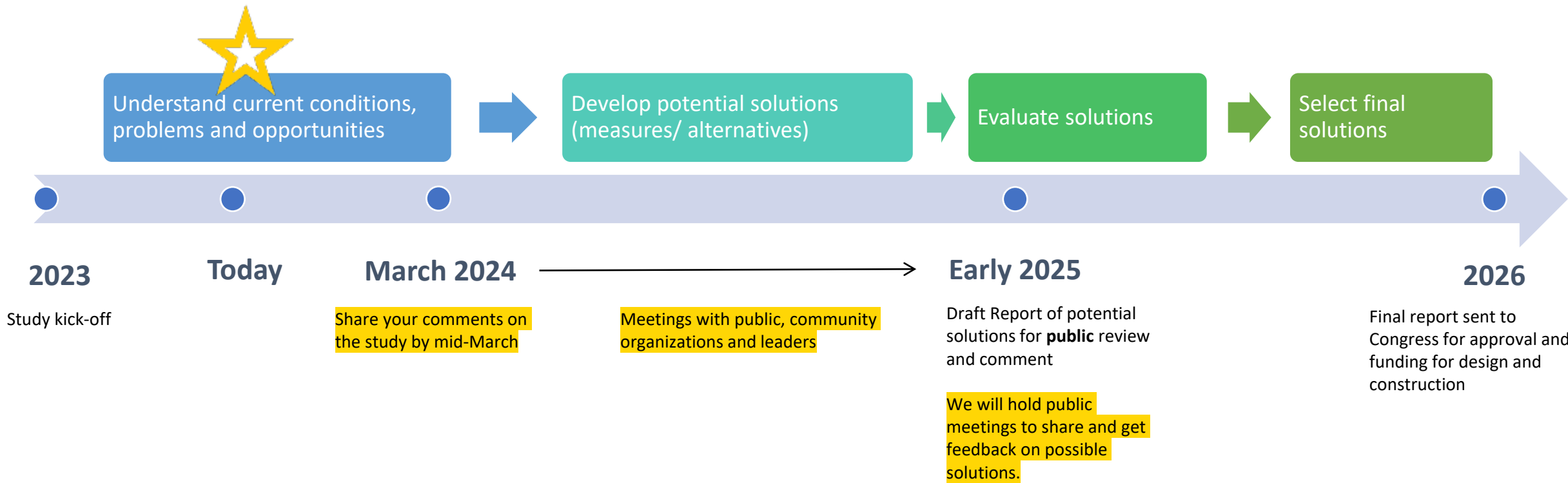


Valley Water
Clean Water • Better Environment • Flood Protection



Coastal
Conservancy

Study Timeline



You can share your concerns and your ideas throughout the study, by emailing ShorelineStudy@usace.army.mil

Feedback Stations

1. Flooding

- Where have you experienced flooding?

2. Community Asset Mapping

- Where do you live, work and spend time in this area?

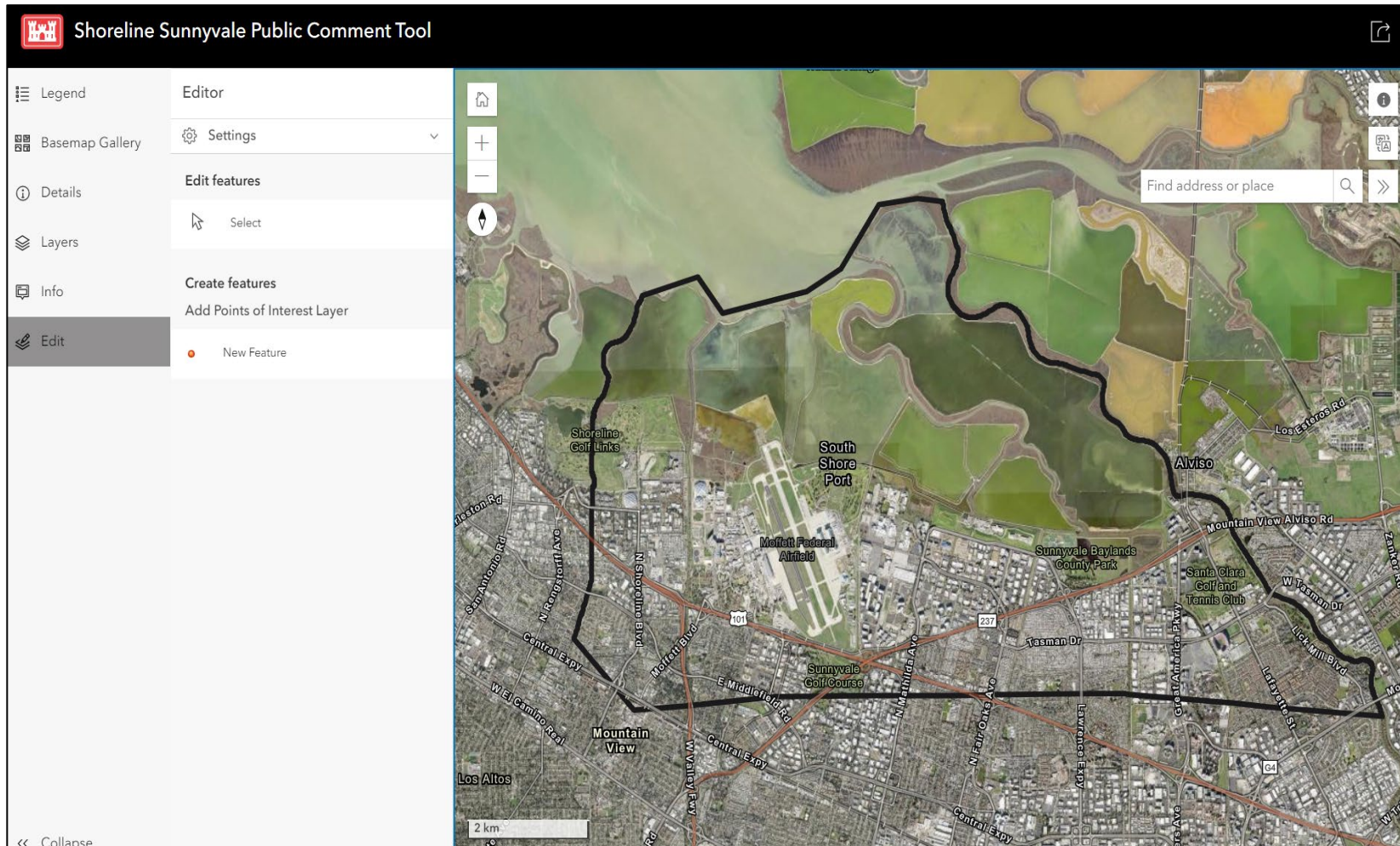
3. Environmental Considerations

- What needs to be protected or restored?

4. General Feedback

- Share your ideas or concerns.

Online Public Comment Tool Tutorial



Online mapping tool:

<https://usace-spn.maps.arcgis.com/apps/instant/sidebar/index.html?appid=678c54b76d0647e0b69f3a49c469dfba>

For more information

Online mapping tool:

<https://usace-spn.maps.arcgis.com/apps/instant/sidebar/index.html?appid=678c54b76d0647e0b69f3a49c469dfba>

Study website:

<https://www.spn.usace.army.mil/Missions/Projects-and-Programs/Current-Projects/South-San-Francisco-Bay-Shoreline-Sunnyvale/>

Please send us your input, alternatives, information and analyses!

- Ideas for potential solutions?
- What do we need to consider?
- Local studies or work we should look at?

E-mail: ShorelineStudy@usace.army.mil



Questions and Comments



US Army Corps
of Engineers®



U.S. ARMY



Valley Water
Clean Water • Better Environment • Good People



Coastal
Conservancy

Feedback Stations

1. Flooding

- Where have you experienced flooding?

2. Community Asset Mapping

- Where do you live, work and spend time in this area?

3. Environmental Considerations

- What needs to be protected or restored?

4. General Feedback

- Share your ideas or concerns.