



Smith Creek Trail Questions and Answers

1. Q – Why was a maintenance road built when previously maintenance on the creek was performed without the road?

A – The access road was already established at this location along Smith Creek. Additional base rock was added to the roadway for better all-weather access. Immediate usage will ensure the active mitigation site can receive water from a water truck. Other uses include inspections and miscellaneous property maintenance.

2. Q – Portions of the creek are eroding away the retaining wall and narrowing the walkway as boulders have fallen into the creek.

A – Smith Creek is routinely inspected at least twice a year. The creek is inspected for deficiencies in functionality and active mitigation requirements. Land on both sides of the creek where erosion is occurring is owned by English Oaks HOA and Town of Los Gatos.

3. Q – Both ends of the trail furnished tall, staggered bollards that are no longer existing. Why were these removed? It has allowed increased traffic that the remaining trail cannot support.

A – Bollards along city/town trails are generally the responsibility of the city/town to maintain. We can discuss more options with the town trail coordinator.

4. Q – Tripping hazard from large rocks at the Granada entrance.

A – Larger sized rock, including the 4"x8" rock near the access gate on Granada, is a best management practice to stabilize earthen maintenance roads and knock off excess dirt on vehicles before entering the roadway. We're open to discussing other options in more detail. Watersheds O&M Unit at Valley Water will put in work order to fill the base rock with gravel to the gate at Granada Way Entrance. They will also smooth out the pedestrian entrance with gravel.

5. Q – Will equipment be parked on the maintenance road? If so, how often, and what for?

Valley Water owned property within the creeks have many maintenance needs and this road will support any of those functions. At this specific location a water truck is often needed to water the newly planted mitigation site a couple times a month.

6. Q – Embankment Erosion Occurring in Smith Creek, narrowing path access from Bicknell Road

A – At this specific location along Smith Creek, Valley Water does not have any land rights or right of way. This means Valley Water does not have permit coverage to be able to perform erosion repairs at this particular location. Land is owned by English Oaks HOA/Town of Los Gatos.

7. Q – Changes in water flow path in the creek the years, eddies forming, potential issues

A – Creeks are always changing based on many environmental factors. We plan to inspect, monitor, and take corrective action as needed to make sure significant impacts are minimized to the surrounding properties.

8. Q – Changes in creek levels during non-rainy times

A – There are many factors contributing to creek flows throughout the year. Some major factor we see include land development, overland drainage, functionality of storm drains, private property irrigation, other human water use activities.

9. Q – Exposed Irrigation

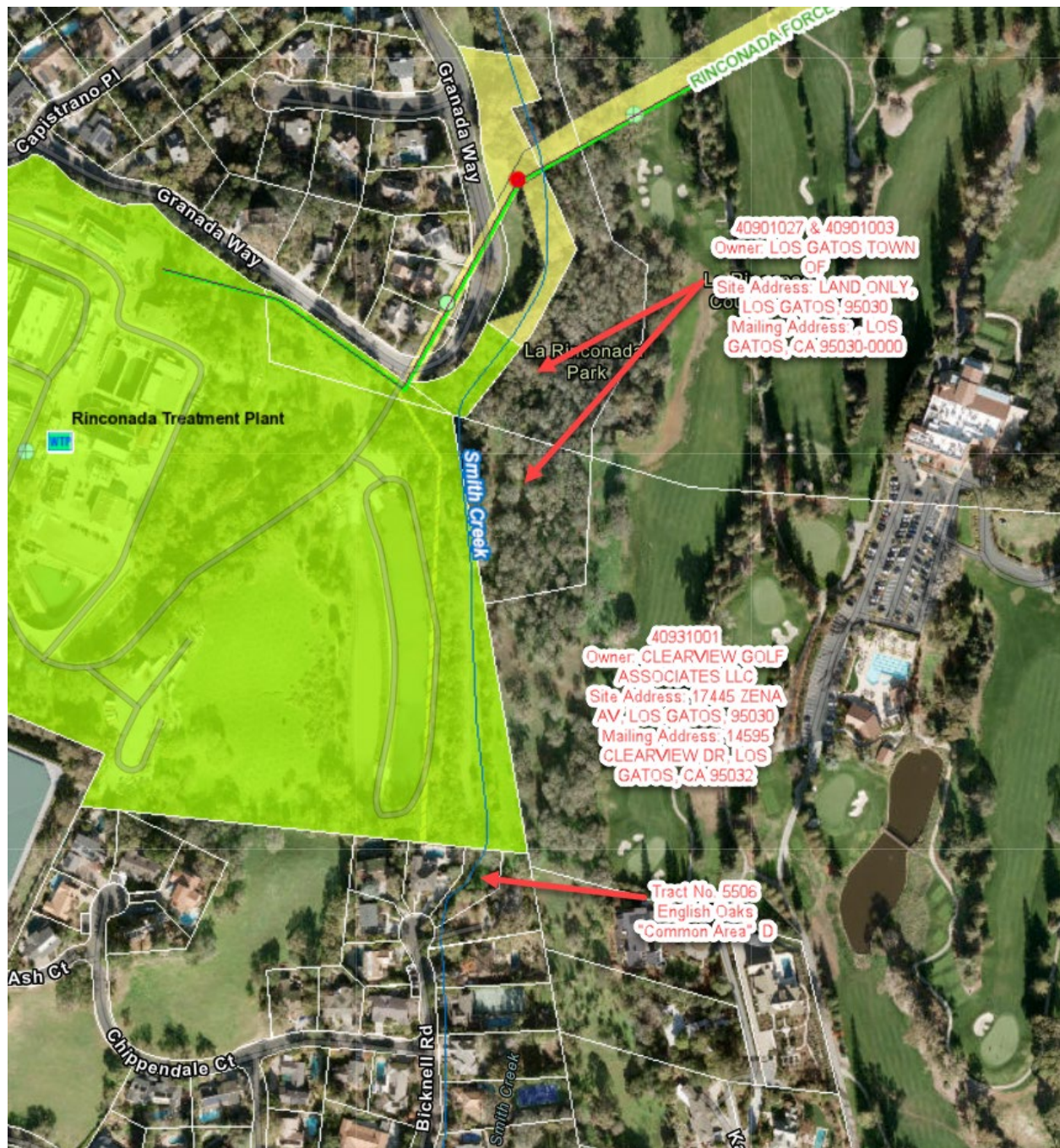
A – The irrigation at this location supports new mitigation plantings. Mitigation planting sites like this one are required by regulatory permitting agencies to offset impacts to the environment caused by construction and maintenance work Valley Water performs in creeks and channels it has jurisdiction over. The success and survivorship of these mitigation planting sites is reported to regulatory agencies and their success is critical for Valley Water to be able to continue performing necessary maintenance work in creeks and channels. A water truck attaches to the exposed irrigation lines to water the young plants. The irrigation hoses will be removed after three years when the plants are mature enough to survive without the additional support.

10. Q – New plantings are dead and aren't maintained

A – The plants at this mitigation site were installed in Jan 2023 and are slow growing. Program staff were there last week and reported 85-90% survivorship of all plants on site. Reminder to please stay out of the revegetated areas. There are native seedlings that can be easily trampled and killed.

11. Q – Questions about who owns what certain pieces of land near smith creek in the area around 687 Bicknell.

A – Green area is owned by Valley Water. Yellow area Valley Water has easement rights.



Photos of Improvements

