

## OVERVIEW

Valley Water's Water Resources Protection Zones (WRPZ) Ordinance was adopted Nov. 26, 2024, to address the environmental, health, and safety impacts of encampments of unsheltered individuals living on Valley Water lands. The WRPZ Ordinance establishes [new regulations prohibiting camping and encampment-related activities on Valley Water lands](#) and outlines Valley Water's approach to encampment cleanup, removal, and enforcement related to violations of the regulations.

## IMPLEMENTATION

The WRPZ Ordinance will enable Valley Water to better manage encampment impacts while continuing to work with local agencies and private partners to implement long-term solutions to address unsheltered homelessness within Santa Clara County. To read the full WRPZ Ordinance and Ordinance Implementation Plan and view a map of Valley Water lands, visit [valleywater.org/encampments](https://valleywater.org/encampments).

## ENFORCEMENT PRIORITY LEVELS

Implementation of the ordinance uniformly across all Valley Water lands would displace unsheltered people from encampments before adequate safe relocation sites, shelter, and housing options are available in Santa Clara County. In consideration of this reality, Valley Water has established priority levels for encampment cleanup and removal under the ordinance. *See reverse for priority levels.*

## ENCAMPMENT CONDITION GUIDELINES

The Ordinance Implementation Plan includes Encampment Condition Guidelines that establish basic parameters by which unsheltered individuals living in encampments on Valley Water lands can minimize negative environmental, health, and safety impacts by promoting positive camping practices and discouraging harmful actions. Valley Water will monitor encampments to ensure that conditions are safe and sanitary. Observations or complaints will be addressed with the unsheltered individuals living in an encampment where complaints or observations occur.

## PROGRESSIVE ENFORCEMENT

Encampments that do not create operations or maintenance access issues and that meet the Encampment Condition Guidelines will be considered low priority for cleanup and or removal. Valley Water is committed to alternatives to enforcement that avoid citation and arrest wherever possible. Valley Water will strive to provide options to remedy violations through positive actions such as education.



# WATER RESOURCES PROTECTION ZONES ORDINANCE

## PROHIBITED ACTIVITIES UNDER THE ORDINANCE\*

The ordinance prohibits camping within Water Resources Protection Zones, which encompass all Valley Water lands.

"Camping" is defined as unauthorized sleeping, erecting a shelter of any type, storing, using, maintaining, or placing personal property.

The WRPZ Ordinance also prohibits:

- Dumping trash, debris, and or other hazardous pollutants
- Activities that could create a hazard to Valley Water employees or the public, or that could interfere with the safe operation of Valley Water facilities
- Unlawful activities, and possession of firearms, ammunition, or fireworks

*\*Refer to the full ordinance for a complete list of prohibited activities*

Scan the QR code to read the WRPZ Ordinance, Implementation Plan, and Encampment Condition Guidelines and to view a map of Valley Water lands.



[delivr.com/2qdjm](https://delivr.com/2qdjm)

## EDUCATION AND OUTREACH

Valley Water staff will inform and educate unsheltered people living within Water Resources Protection Zones (WRPZ) on the ordinance and Encampment Condition Guidelines on a real-time, continual basis during encampment site visits.

## VALLEY WATER RESPONSE TO PROHIBITED ACTIVITIES

Valley Water will take an educational approach to enforcing the ordinance by:



Providing educational information on activities prohibited by the ordinance.



Assisting in identifying Valley Water lands where ordinance prohibitions apply.



Providing an opportunity to self-remedy any violations.

Valley Water may take one or more of the following actions in response to activities prohibited by the ordinance:

Request the violator cease the prohibited activity or activities.



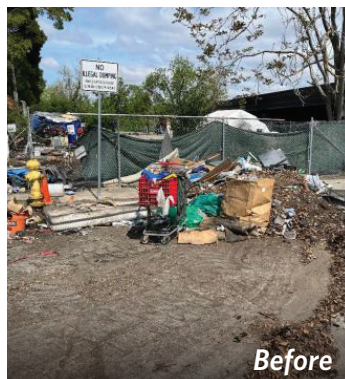
Request the violator relocate an encampment.



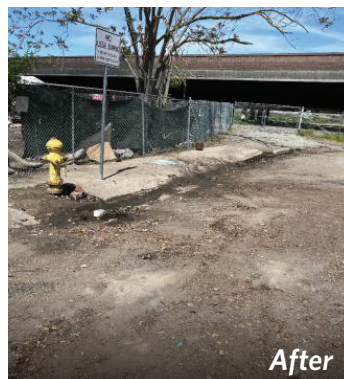
Prioritize an encampment for cleanup and or removal.



Request law enforcement involvement to address unlawful activity.



Before



After

Guadalupe River encampment cleanup at Willow Street in San José.

## ENFORCEMENT PRIORITY LEVELS

Valley Water will prioritize encampment cleanup and removal as necessary to protect employees and public safety and to carry out Valley Water business.

### HIGH PRIORITY FOR ENFORCEMENT

An encampment will be prioritized as high priority for cleanup and removal under any of the following conditions.

- The encampment is located in the path of or obstructing access to flood protection or water infrastructure facilities or projects; or designated restoration or vegetation management sites.
- The encampment is located within an area with posted signage listing restrictions on camping or re-encamping.
- The encampment poses an immediate safety risk, including situations that involve Valley Water staff safety or public safety issues, as determined by government agencies and their police or fire departments.
- The encampment is associated with extreme environmental hazards, including impacts to fish and wildlife or imminent human health or fire hazards.

In addition, unauthorized motor vehicles and trailers located within a Water Resources Protection Zone will be classified as high priority for cleanup and removal.

### LOW PRIORITY FOR ENFORCEMENT

Encampments that meet the Encampment Condition Guidelines and maintain an external footprint, including all belongings, of 12 feet by 12 feet or less and do not create operations or maintenance access issues.

## ENCAMPMENT REMOVAL PROTOCOL

When cleanup and removal action is warranted, per the priority levels described above, Valley Water staff will follow an encampment removal protocol:

Post the encampment for cleanup and removal.



Provide 72 hours notice before cleanup and removal.



Collaborate with local agencies for offers of available services and or housing or shelter.

Arrange for processing and storage of personal belongings.



Perform encampment cleanup and removal.

