

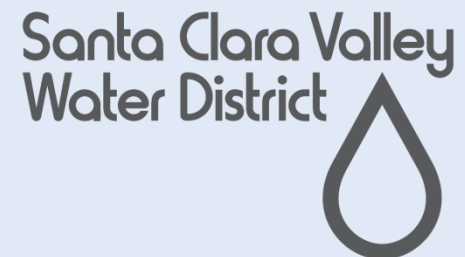
# Upper Penitencia Creek Project: Flood risk reduction, recreation, water supply & creek habitat benefits

*Your Safe, Clean Water and Natural Flood Protection Program vote at work.*

Public Meeting

Tuesday October 2, 2018

6:30 – 8:30 p.m.



# Meeting materials

Facebook audience: The meeting materials for tonight's meeting are available on the project's webpage:

**<https://valleywater.org/upper-penitencia-creek>**

# Agenda

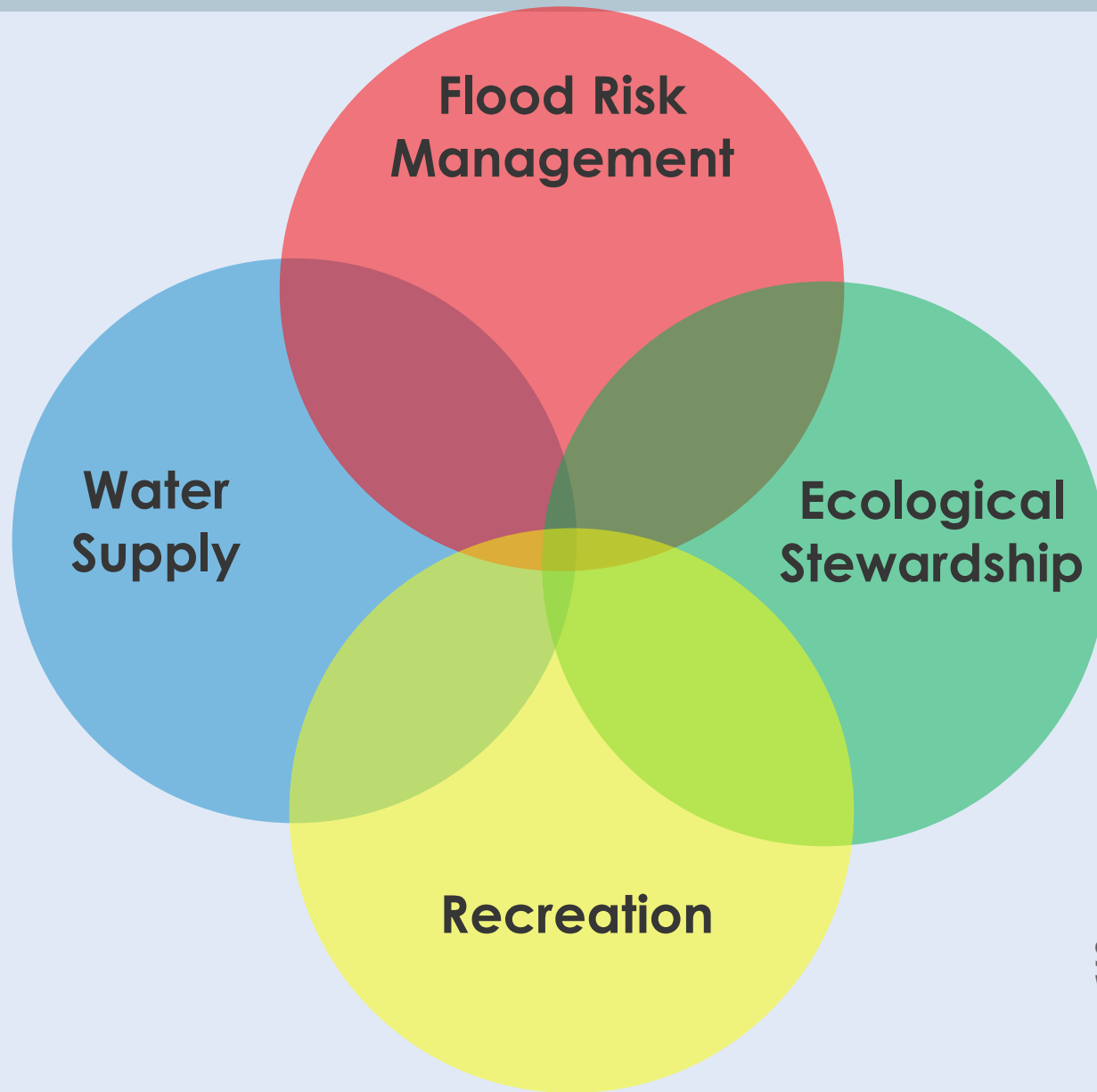
- Check-in and refreshments
- Welcome & Introductions
- Upper Penitencia Creek Project presentation
- Community Q&A
- Individual group discussion and feedback
- Group report out
- Next steps
- End meeting

# Project Presentation

- ▶ Multi-Benefit Approach
- ▶ Watershed
- ▶ Landscape Vision Process
- ▶ Problems & Opportunities
- ▶ Project Concepts
- ▶ Alternative Analysis

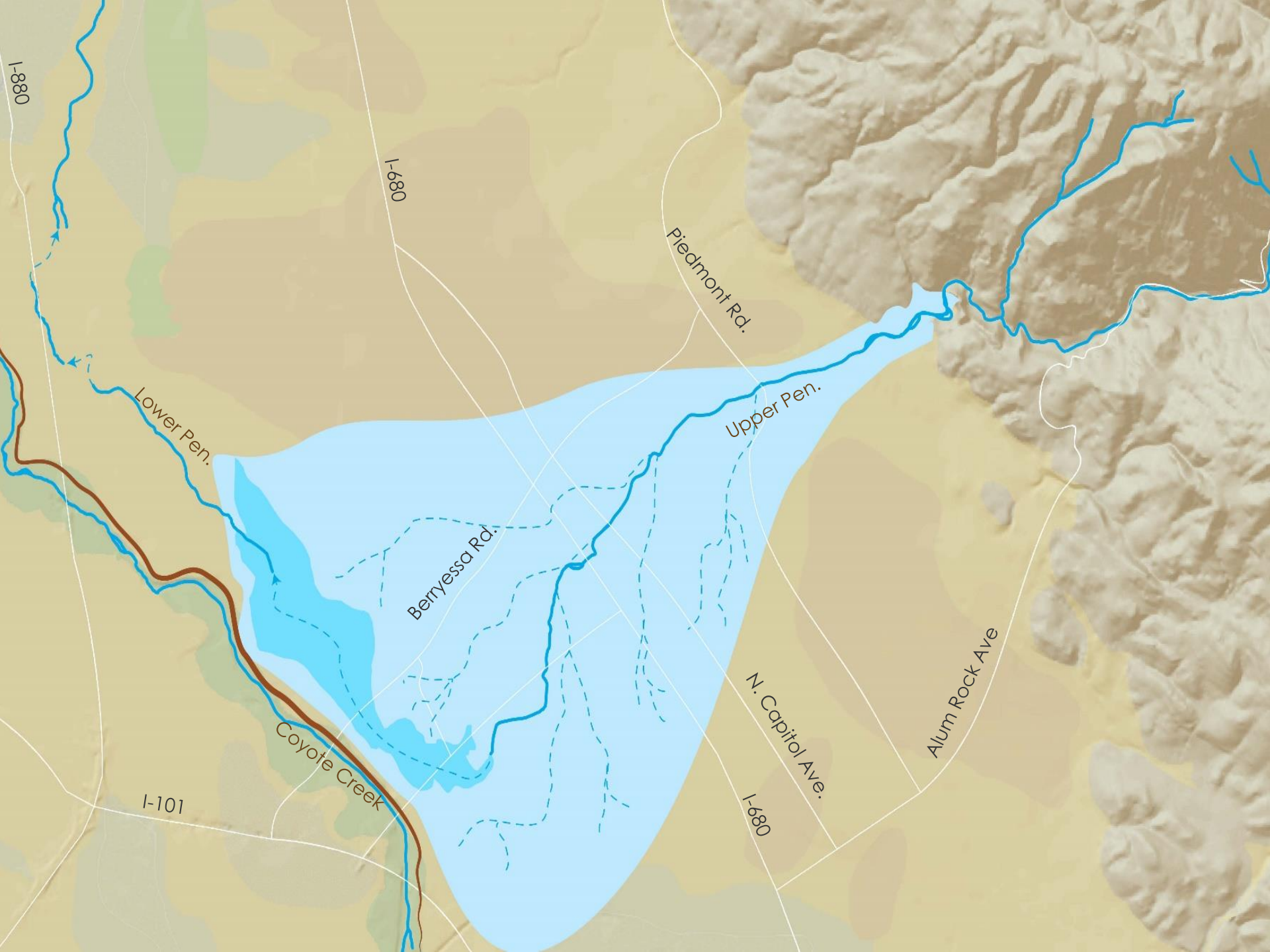


# Multi-Benefit Project



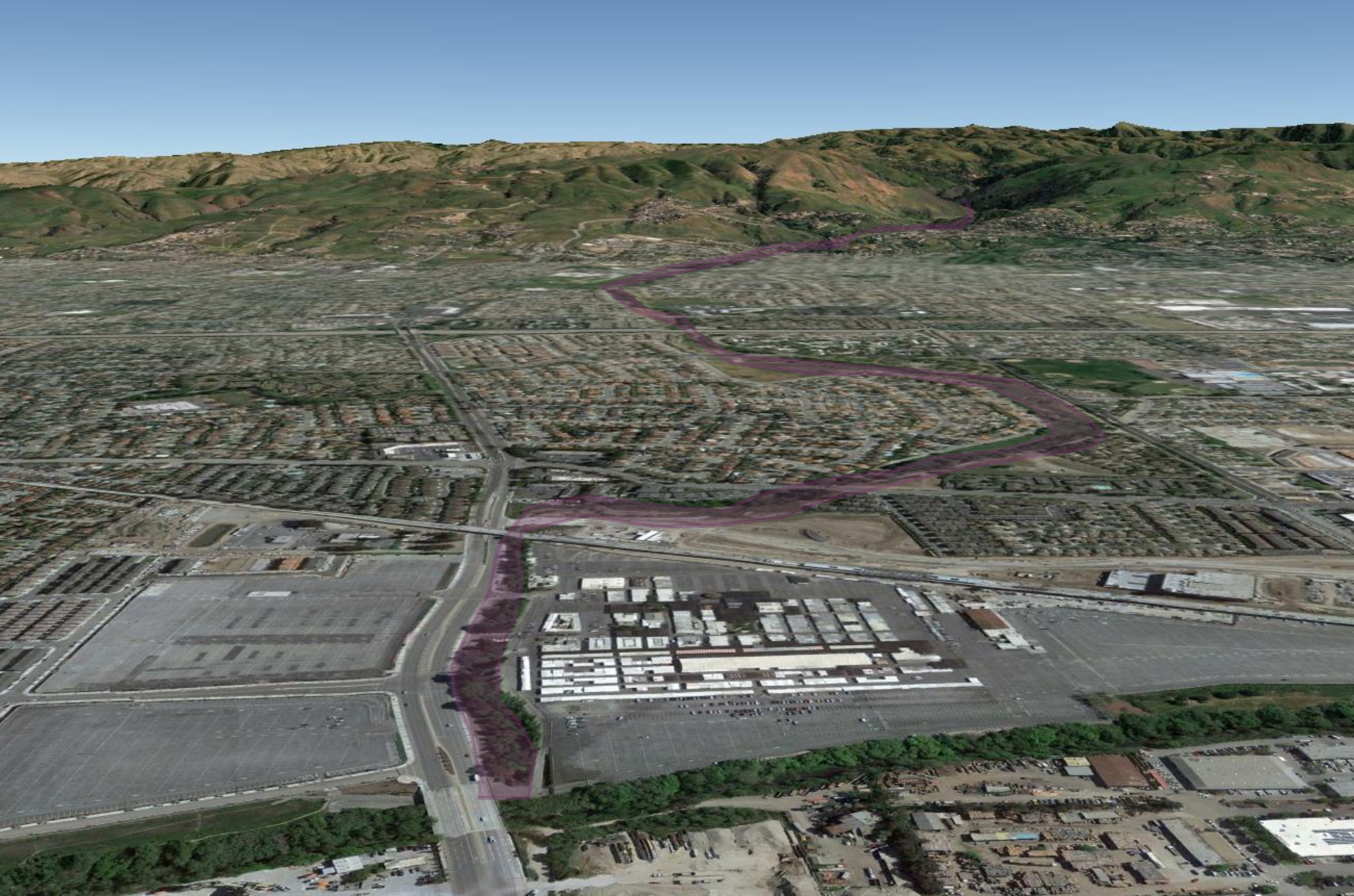
# Landscape Vision Process with SFEI

- ▶ Multi-Objective
- ▶ Science advisors workshop
- ▶ District charrettes
- ▶ Partner charrette
- ▶ Science Advisors – Workshop 2
- ▶ **Public Meeting** ←
- ▶ Finalizing Report – Concept Plan



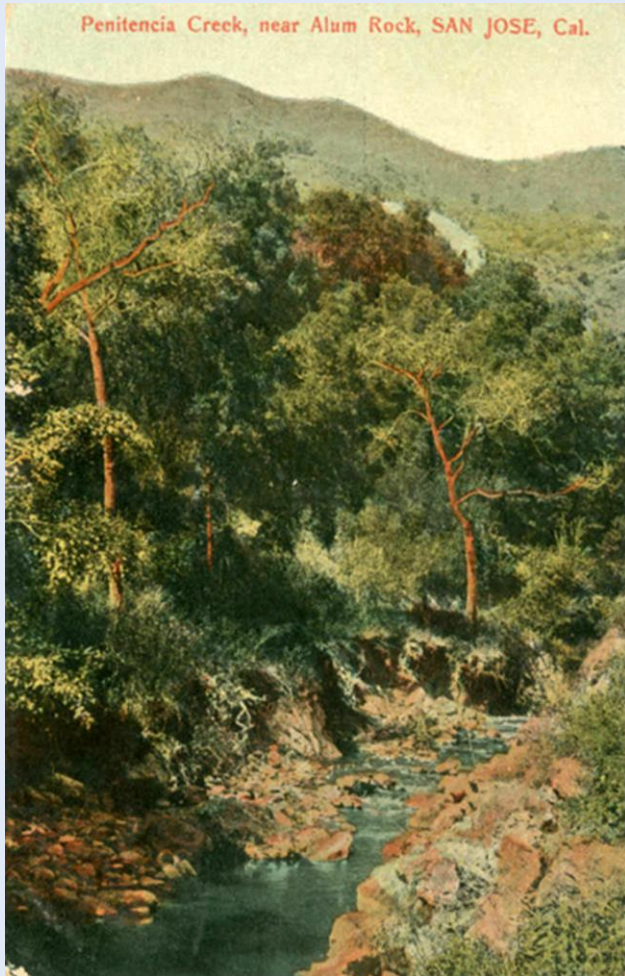


# Watershed Background





# Watershed Background





Falls at Alum Rock Park, San Jose, Cal.











# Watershed Background

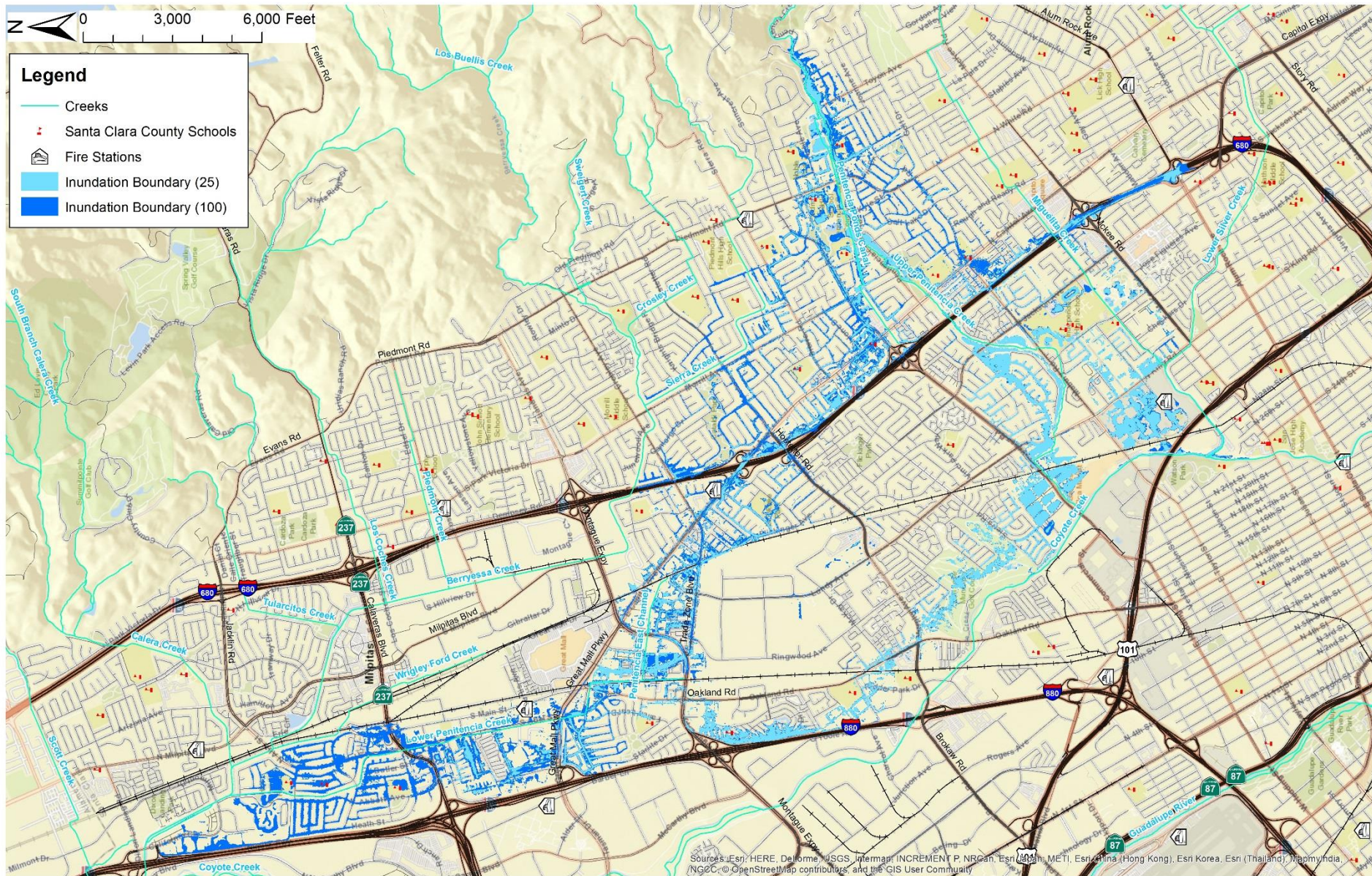


# Problems and Opportunities

- ▶ Flood Risk
  - ▶ Damages
  - ▶ Health and Safety
- ▶ Ecological
- ▶ Maintenance
- ▶ Water Supply
- ▶ Recreation



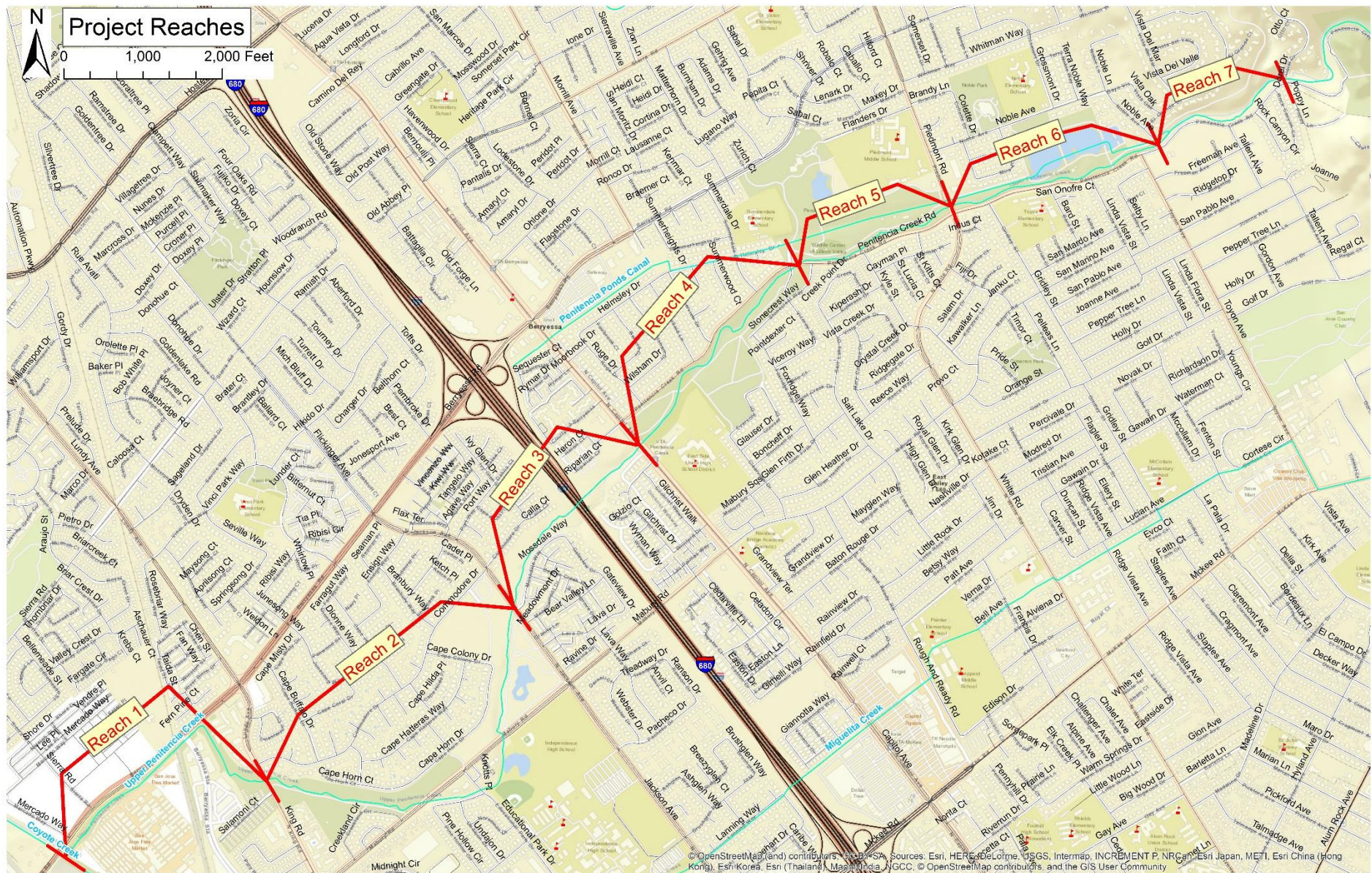
# Current District Flood Map



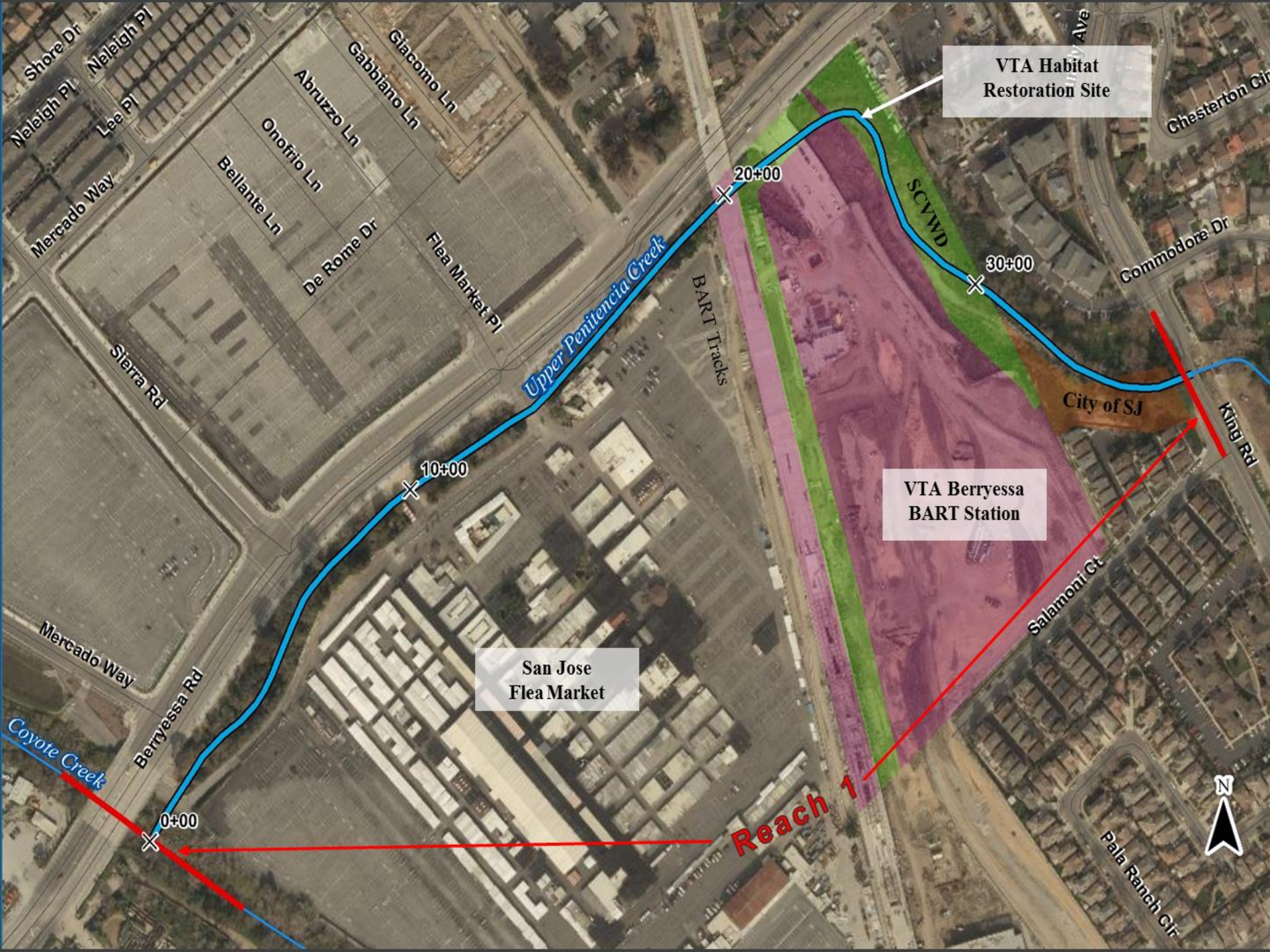




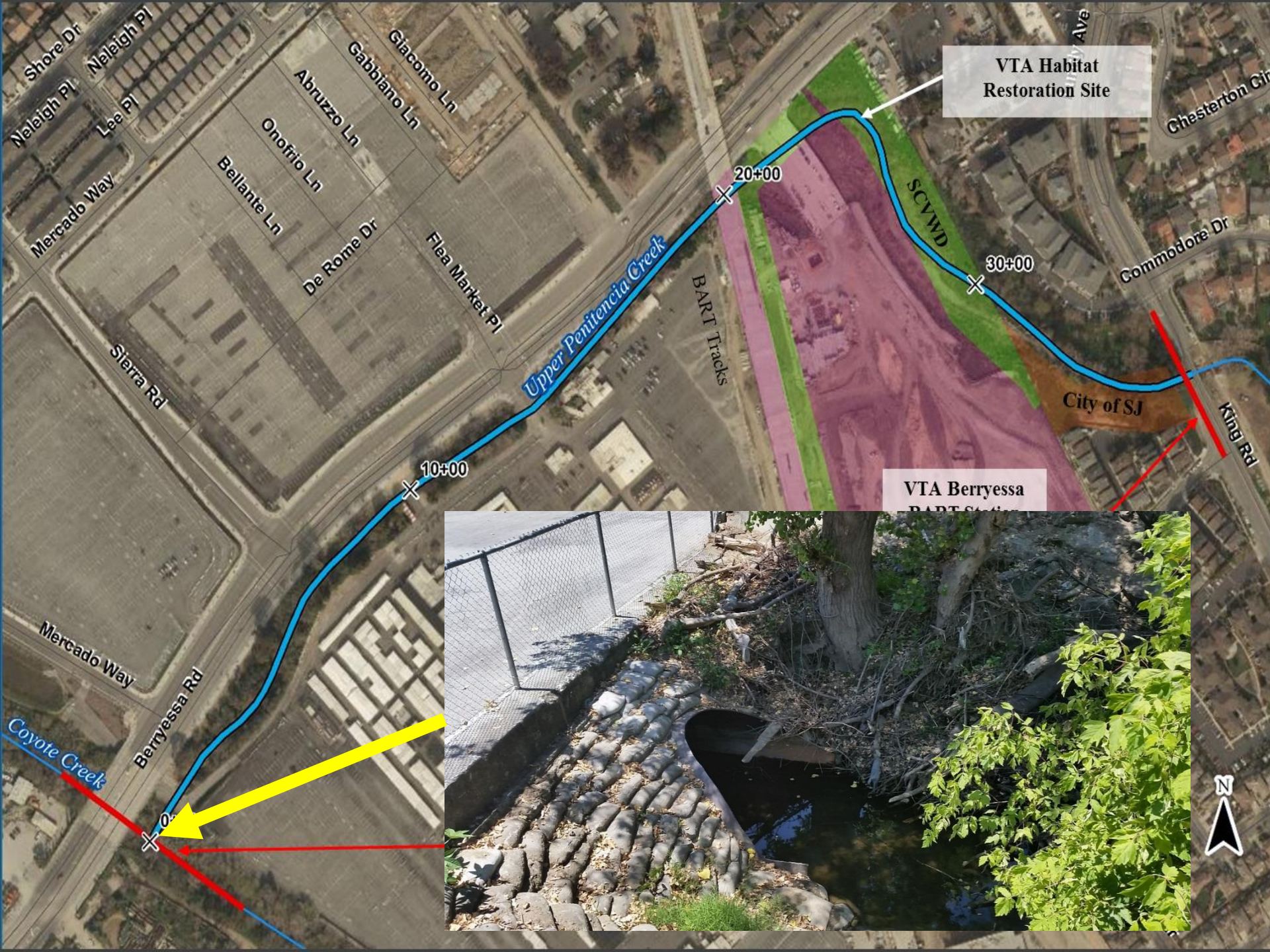








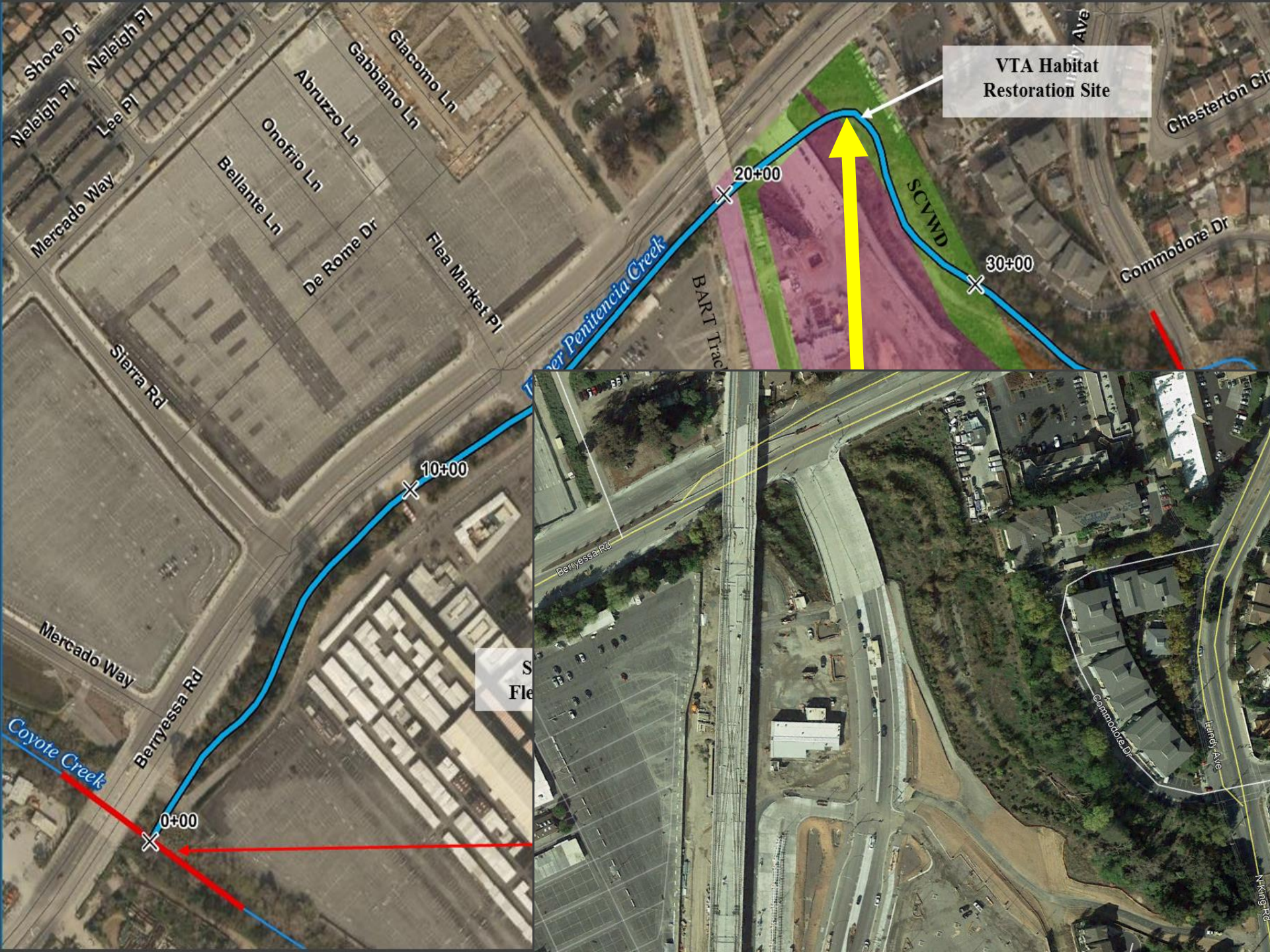








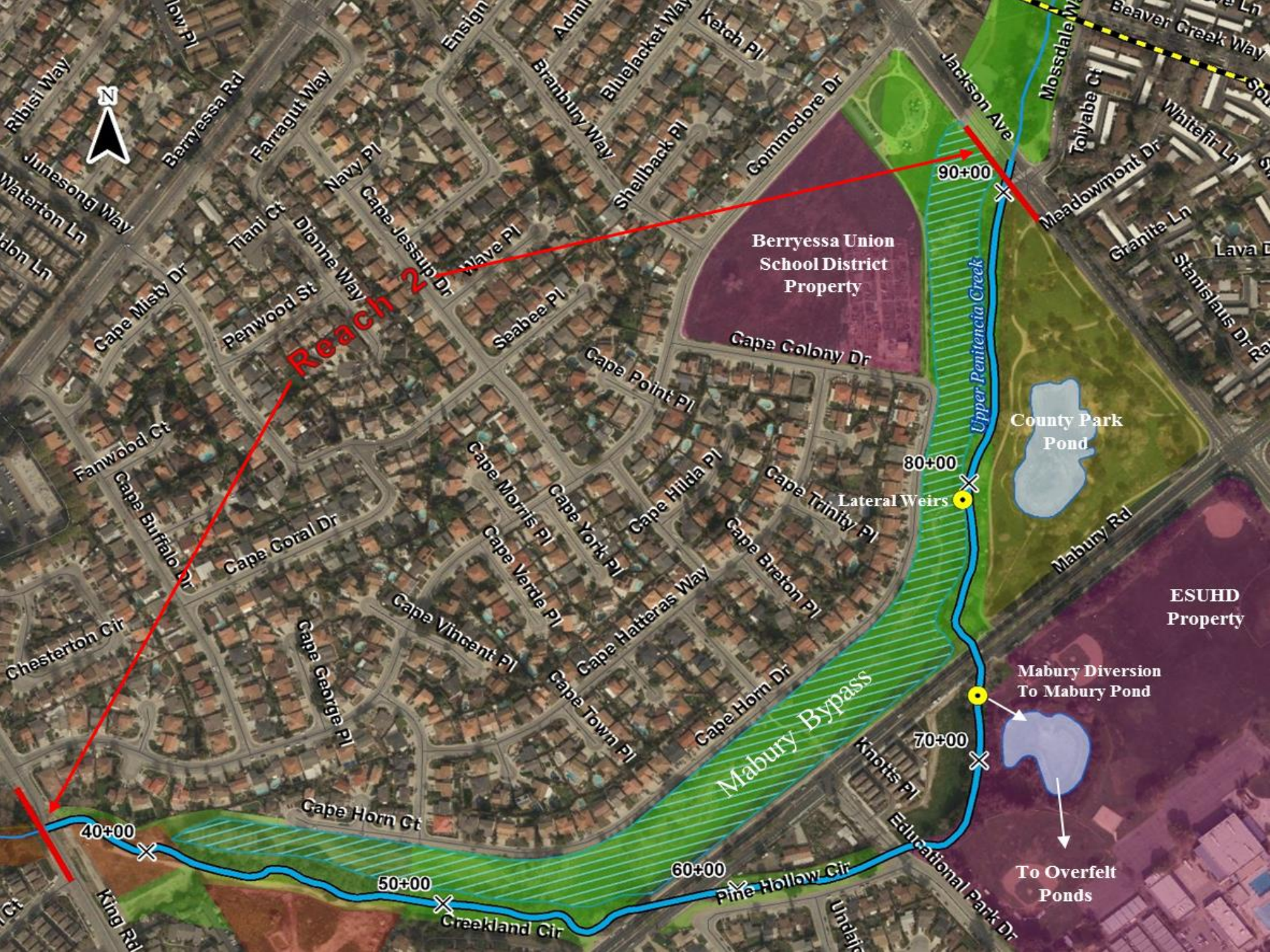
















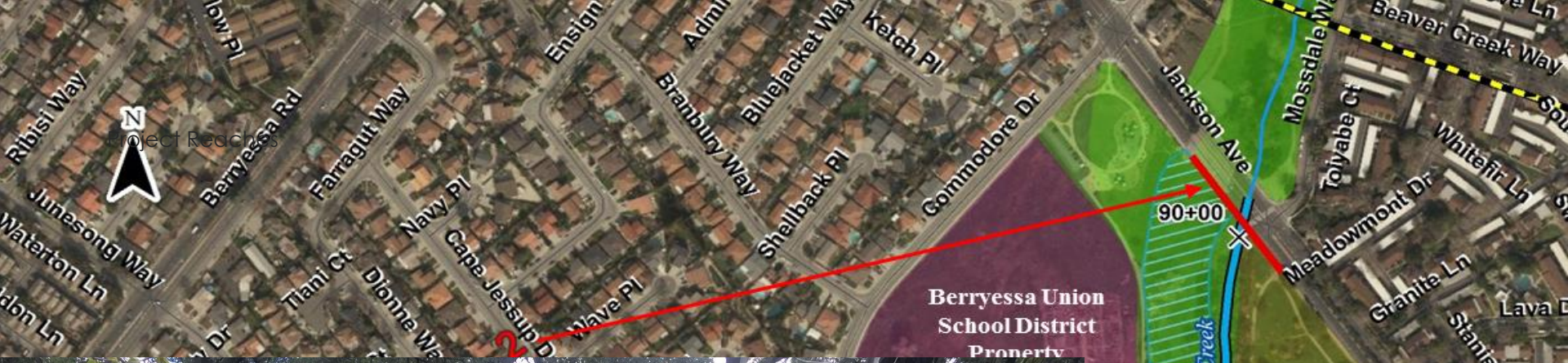




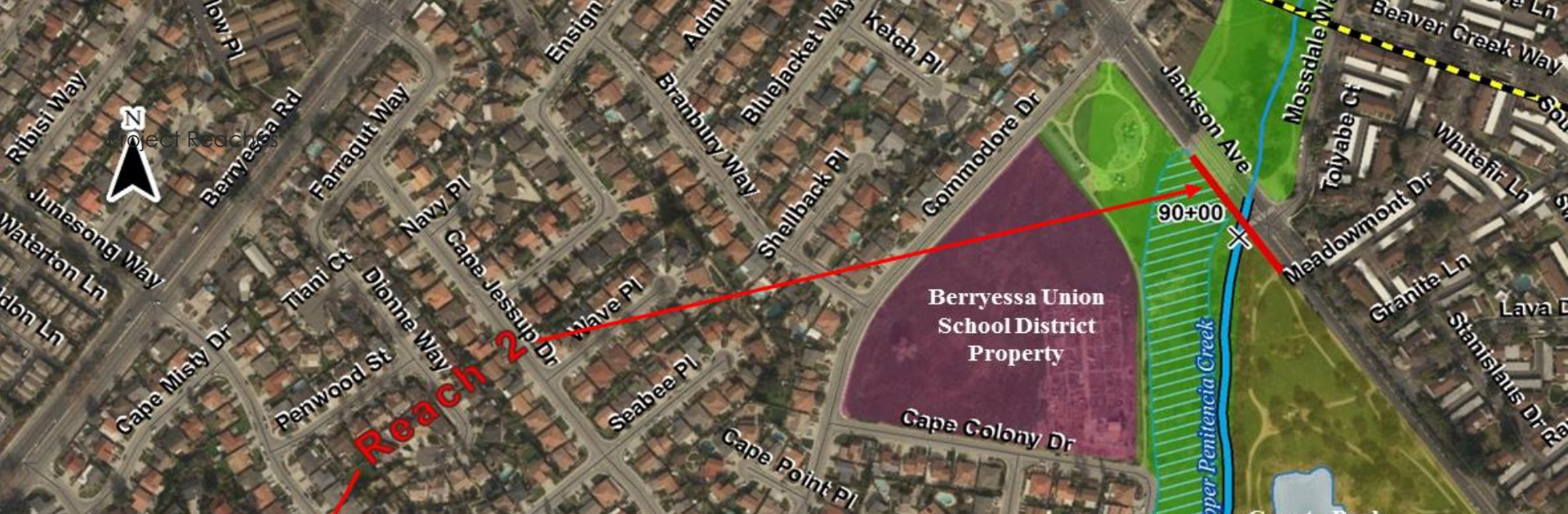








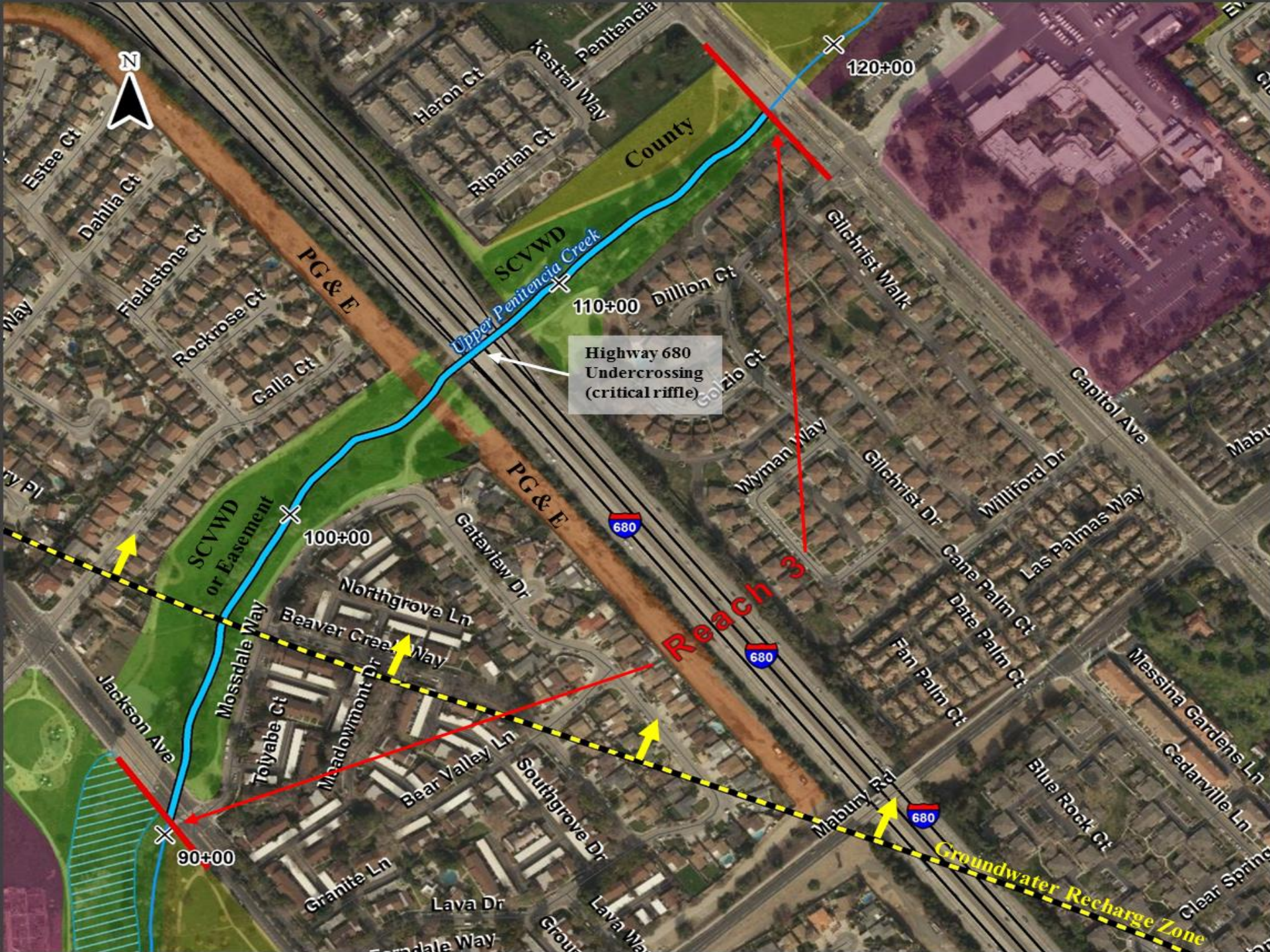








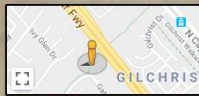








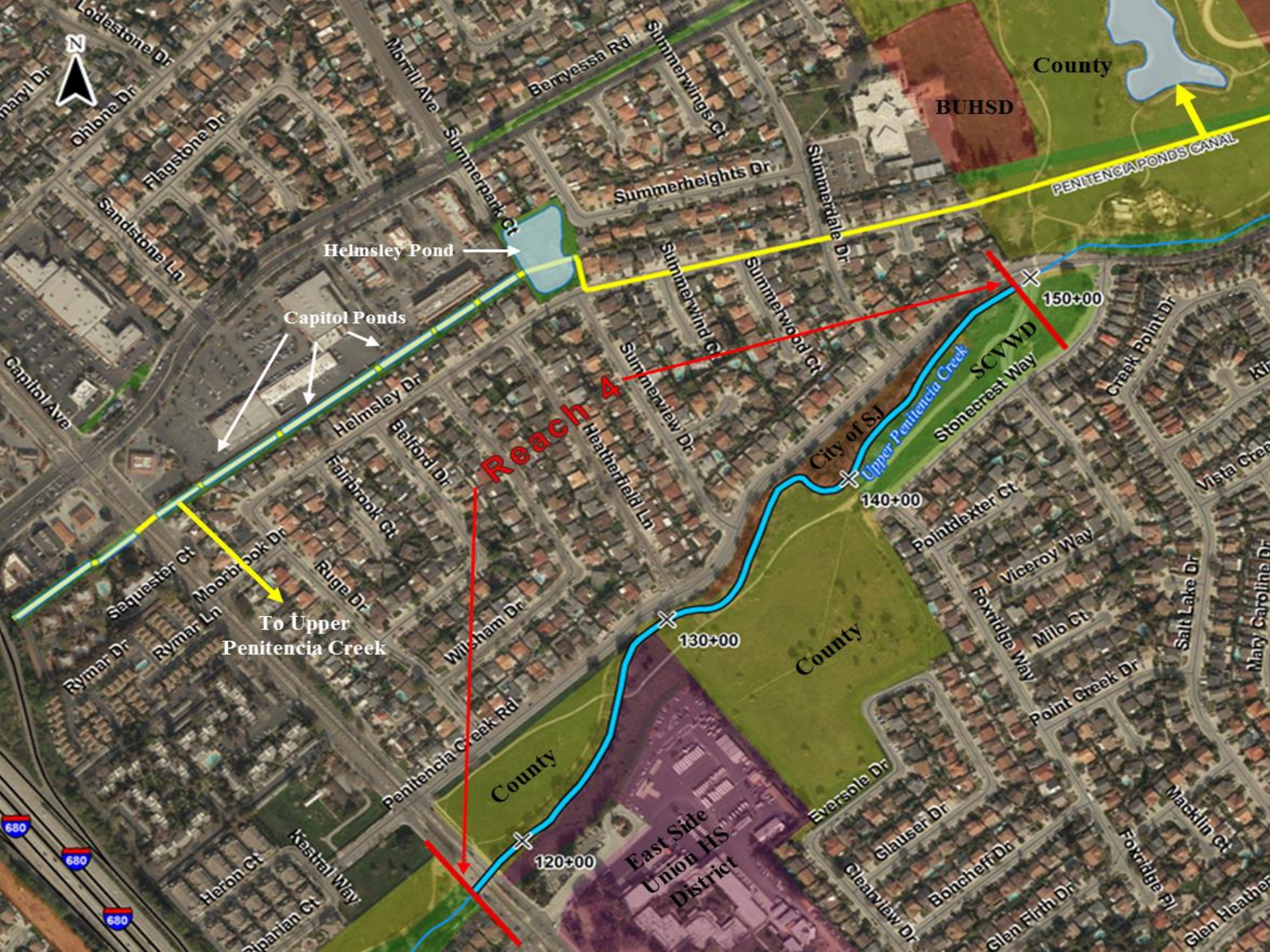












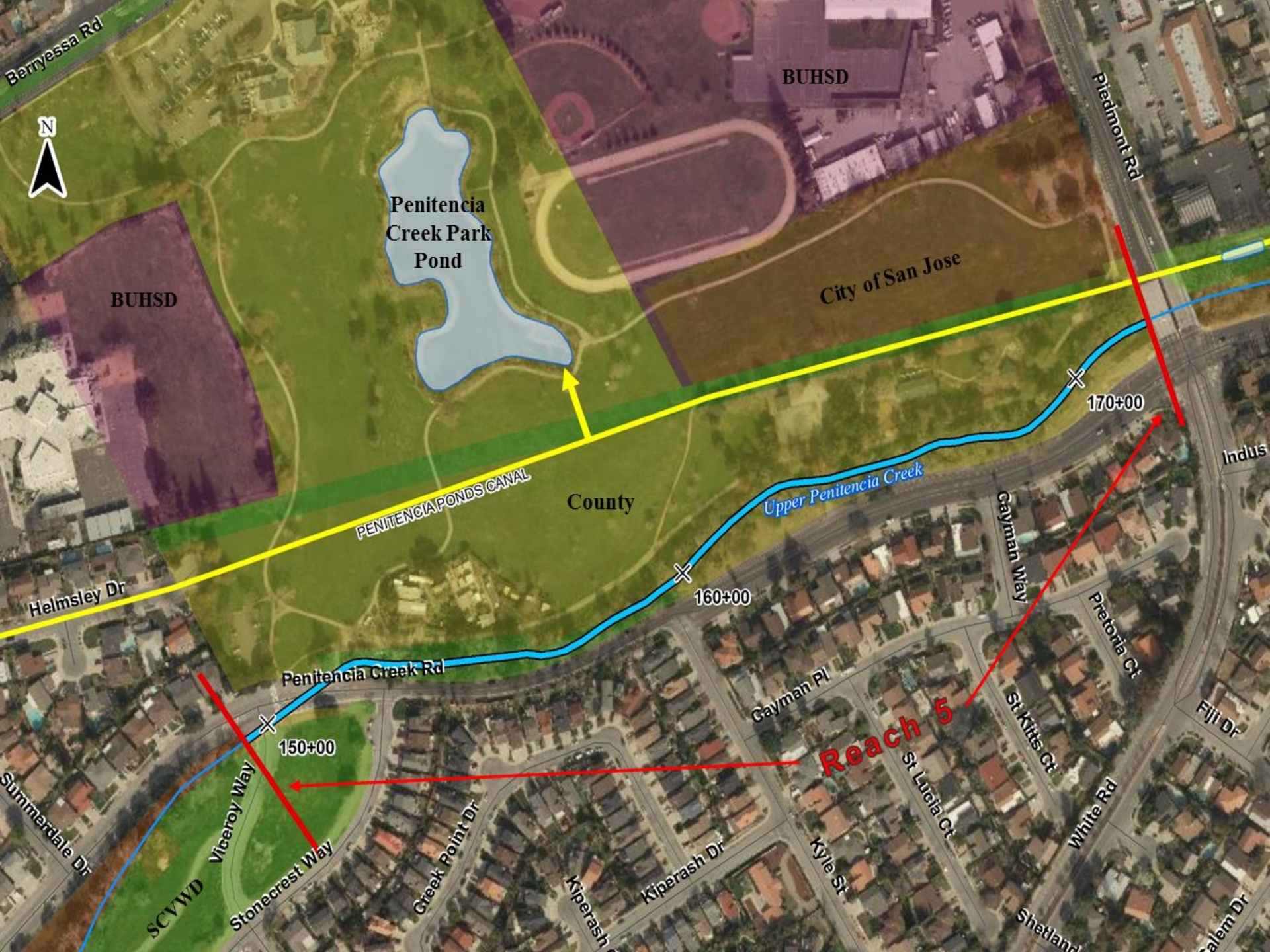




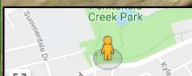
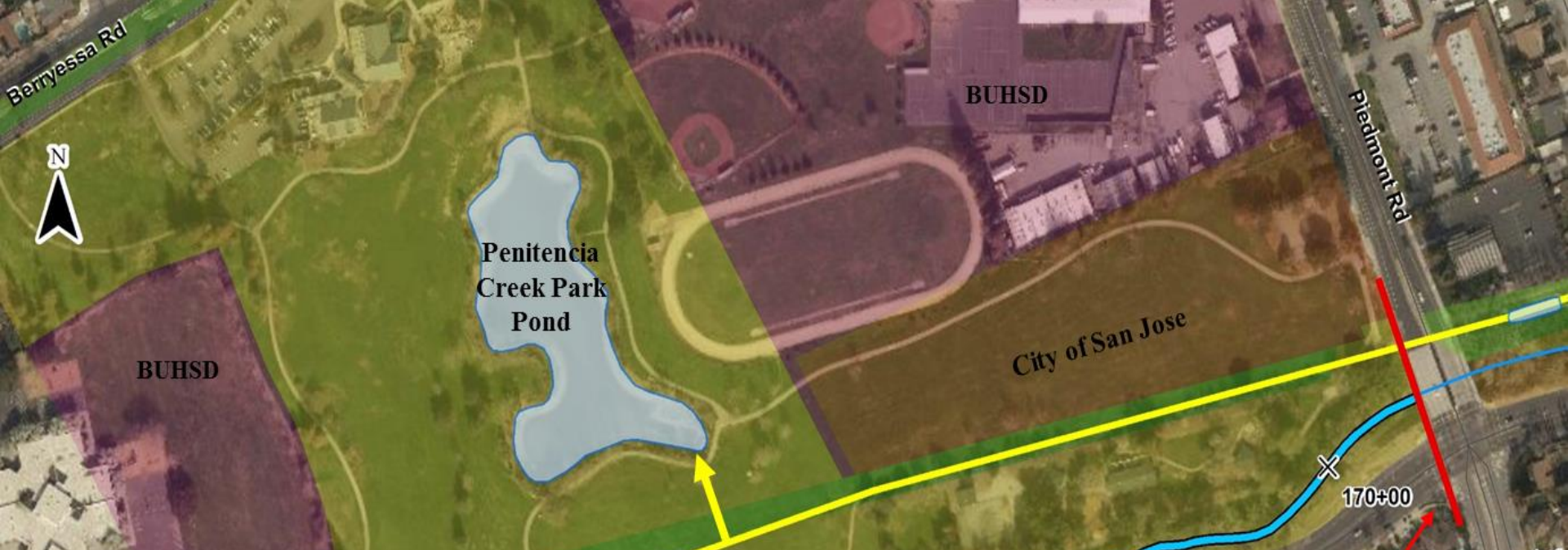




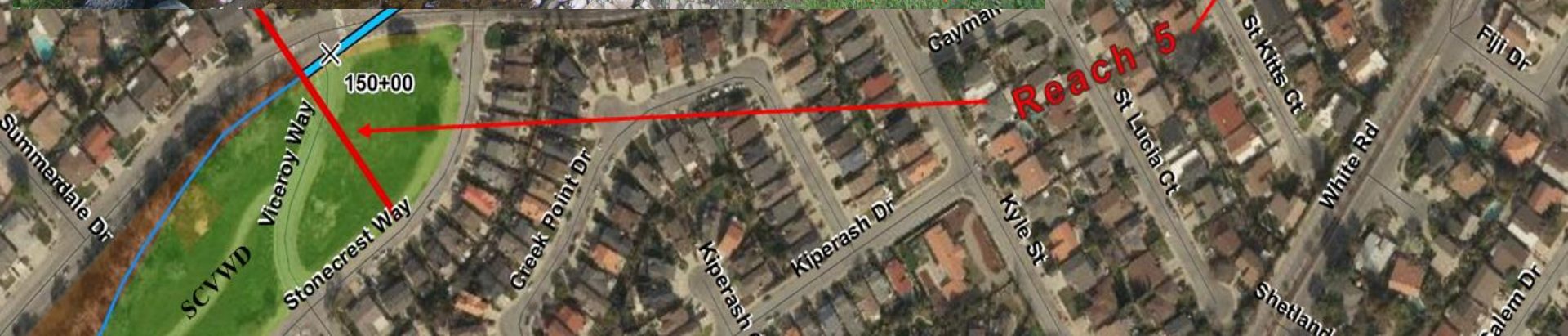
















Noble Diversion  
and Fish Ladder  
(non-functional)

Piedmont Ponds

Bob Gross  
Ponds

Pond 2

Pond 3

Pond 1

Pond 1b

Pond 1c

SCVWD  
or Easement

Pond Overflow  
To Creek

Upper Penitencia Creek

South Bay  
Aqueduct  
Turnout

Pond Overflow  
To Creek

PENITENCIA PONDS CANAL

180+00

190+00

200+00

170+00

Berryessa Union  
School District

Reach 6

Indus Ct

Hedda Ct

Gridley St

Dorian Ct

San Mardo Ave

San Marino Ave

San Pablo Ave

Joanne Ave

Linda Flora

San Pablo Ave

Linda Vista St

Salby Ln

Surf Ct

San Onofre Ct

Baird St

Alba Ct

Ridgetop

Toyon Ave

Freeman A

Colette Dr

Noble Ave

Mira Vista Ct

Mira Vista Cir

Online Ct

Piedmont Rd

Cayman Pl

White Rd

Almansa Ct

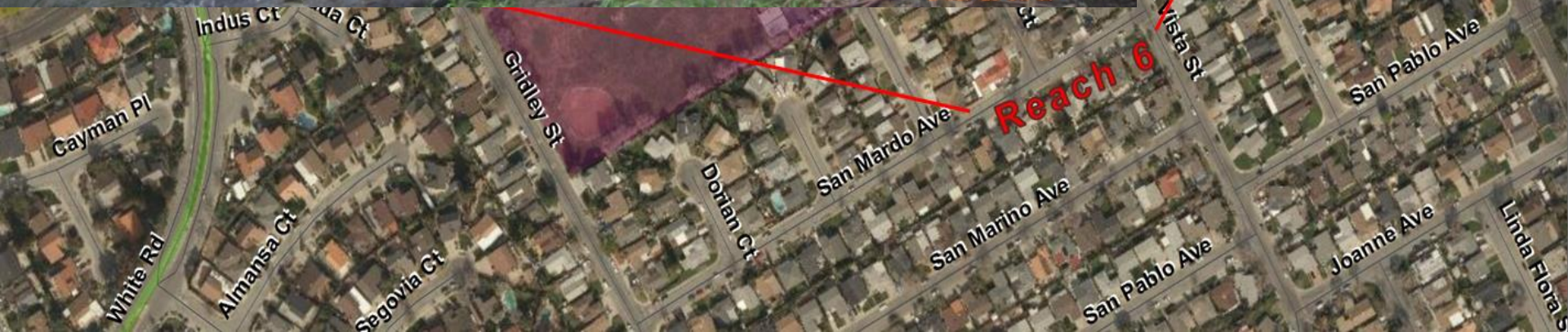
Segovia Ct





MAR 9 2016

W: 121° 50' 10" 18"  
N: 037° 22' 31" 44"



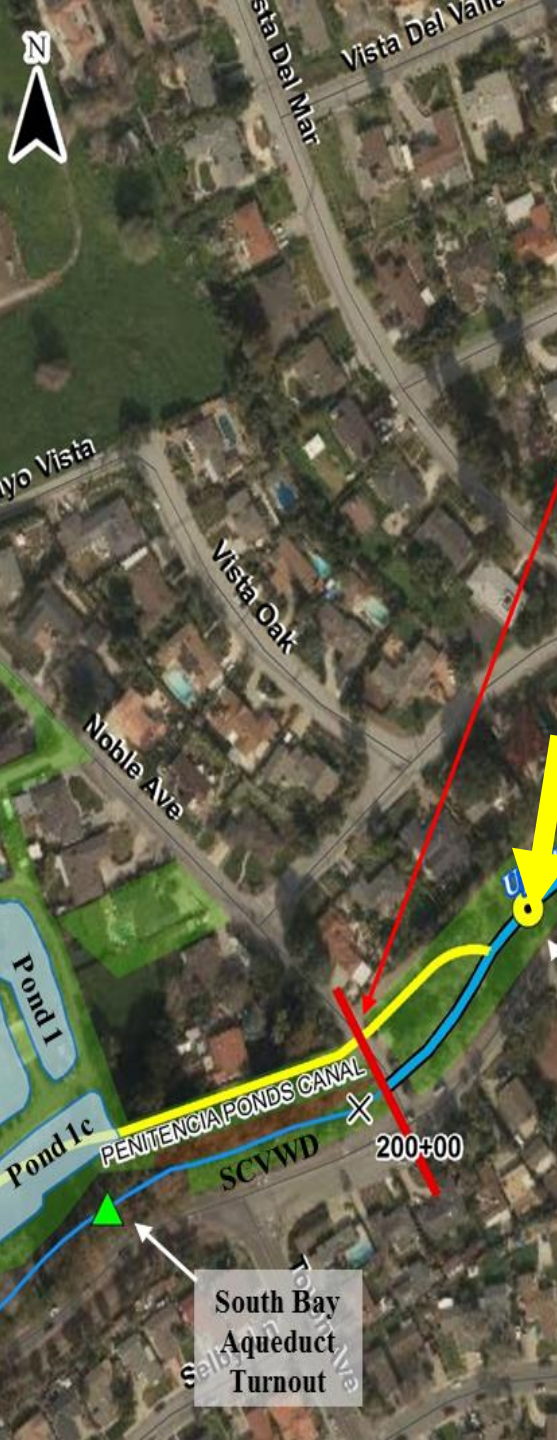












Noble Diversion  
and Fish Ladder  
(non-functional)

South Bay  
Aqueduct  
Turnout







Reach 7

To Cherry Flat Reservoir

San Jose

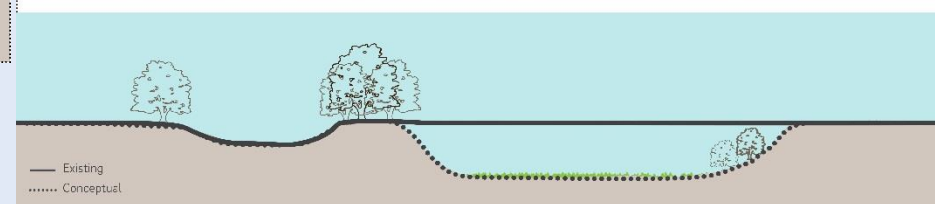
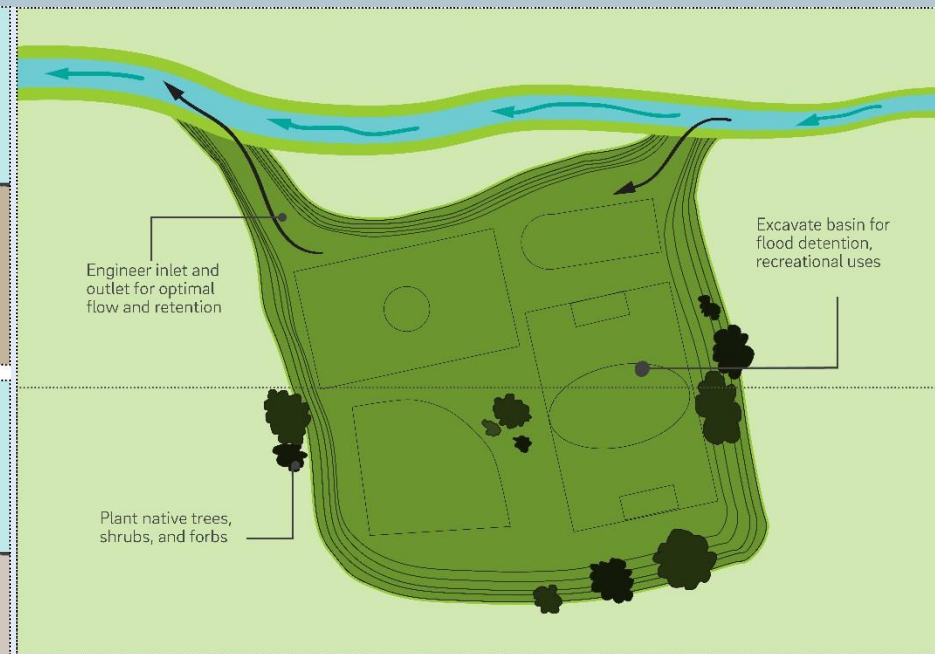
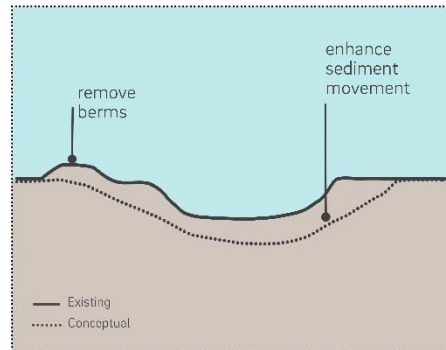
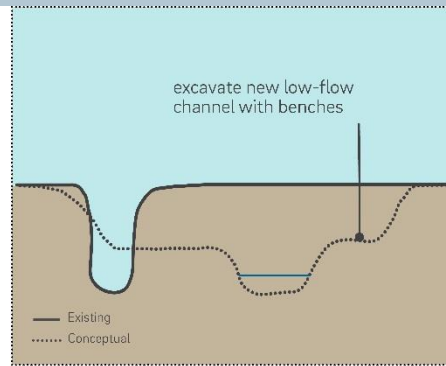
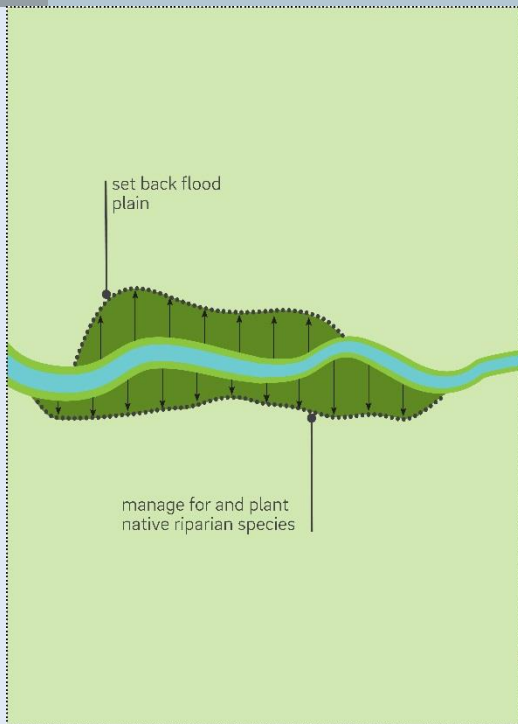
220+00

230+00

2016/05/12 11:18



# Typical Concepts



- ▶ Expand Floodplain
  - ▶ Low flow channel
  - ▶ High flow benches
- ▶ Riparian Enhancements
  - ▶ Sycamore/Willow Woodlands
  - ▶ Shrub layer
  - ▶ Remove non-native species

- ▶ Detention
  - ▶ Temporary flood storage
  - ▶ Recreation
  - ▶ Plant native species



# Landscape Vision/Strategy

## LANDSCAPE STRATEGY CONCEPTS OVERVIEW PRELIMINARY DRAFT





## Reach 1 DRAFT CONCEPTS

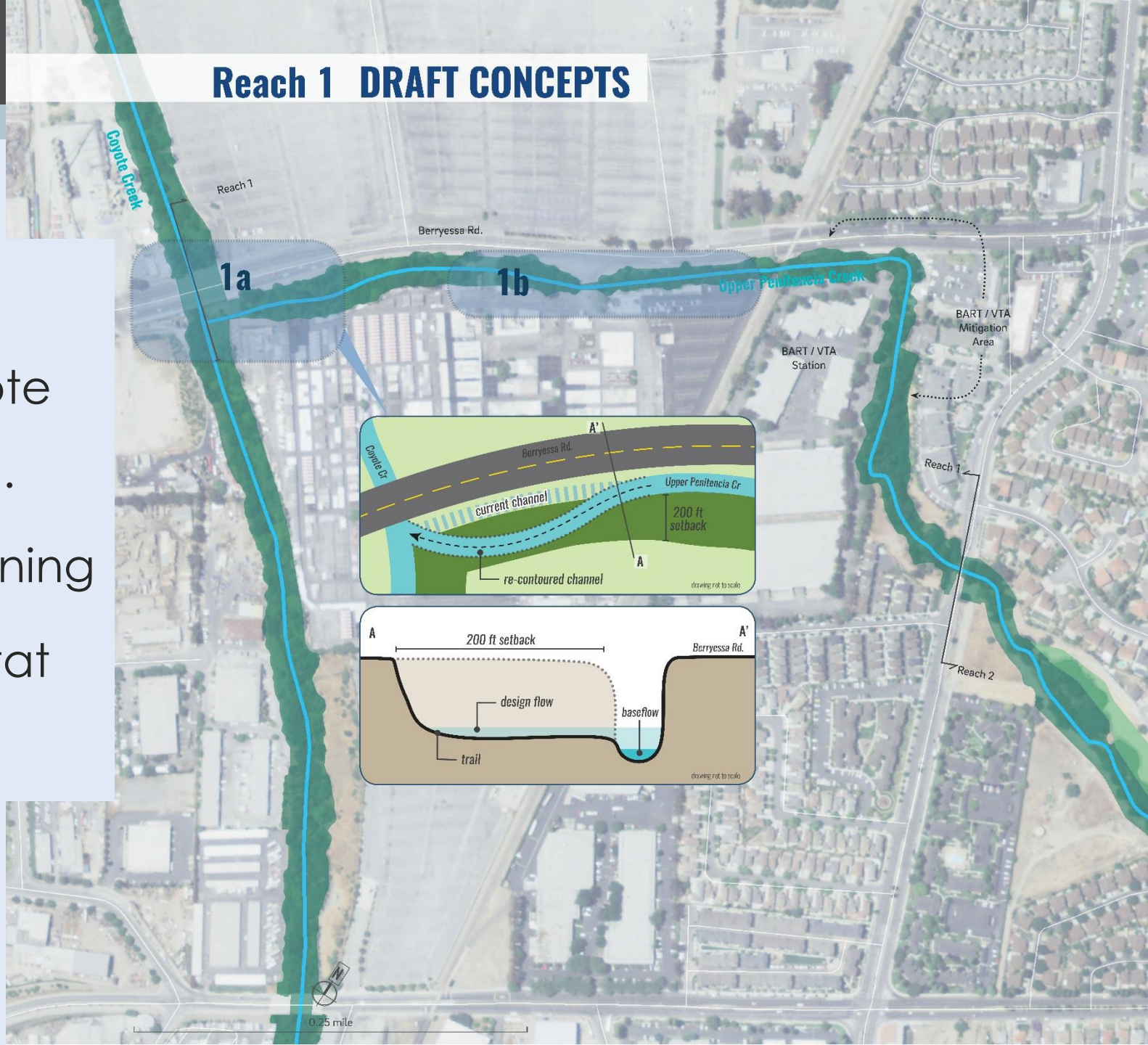
1a,b

Coyote  
Confl.

Widening

Habitat

Trail





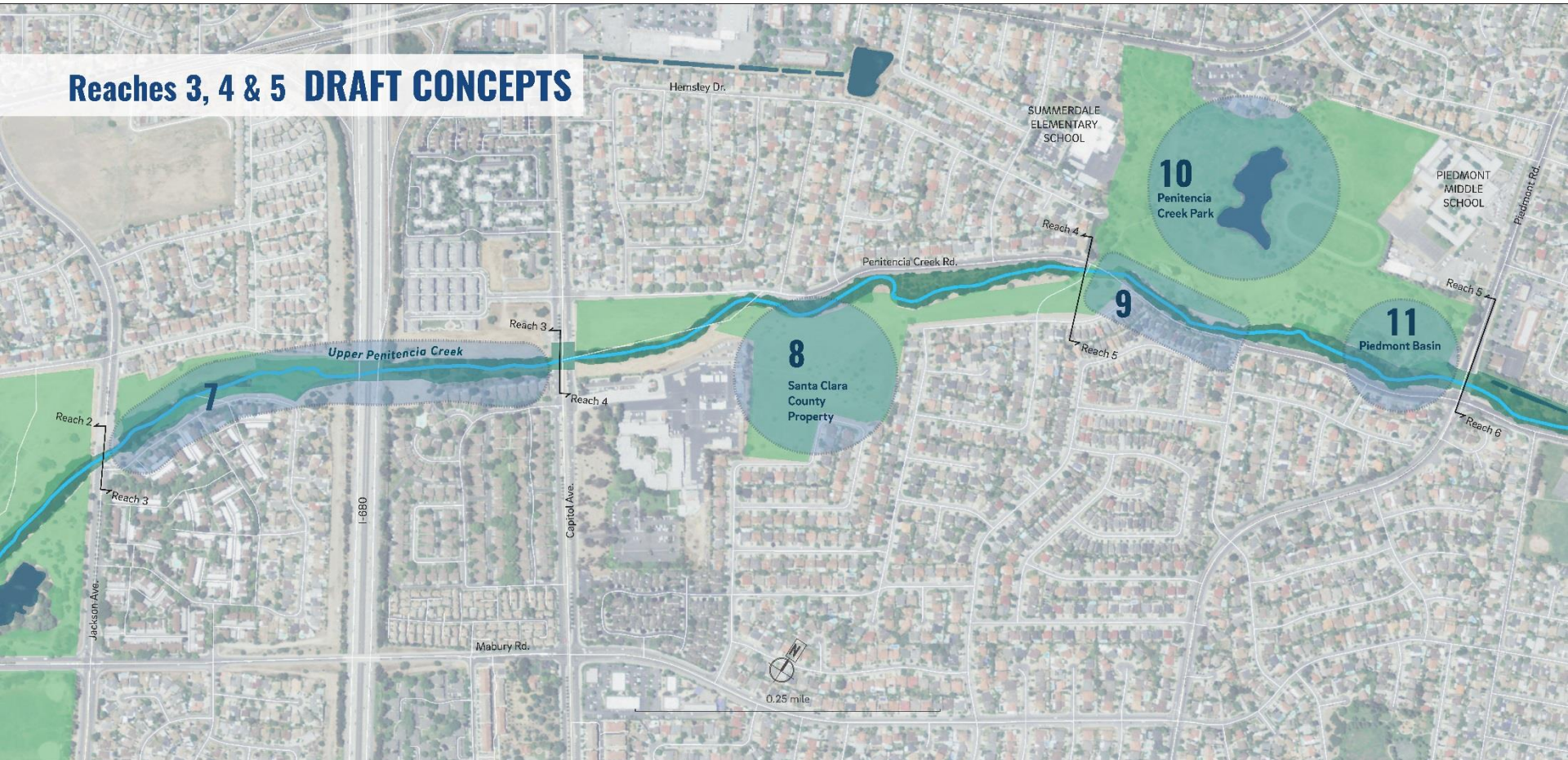
## Reach 2 DRAFT CONCEPTS

- ▶ 2, 3
  - ▶ Widening
  - ▶ Riparian
- ▶ 5. Flow Split
- ▶ 4,6 - Detention





## Reaches 3, 4 & 5 DRAFT CONCEPTS



### ► Reach 3 – Conc. 7

- Widening
- Riparian

### ► Reach 4 – Conc. 8

- Detention

### ► Reach 5

- Conc. 9 – Widening, Riparian
- Conc. 10, 11 - Detention



# Reaches 6 & 7 DRAFT CONCEPTS



- ▶ Reach 6: Conc. 12
  - ▶ Detention
  - ▶ Water Supply
- ▶ Reach 6, 7: Conc. 13, 14
  - ▶ Widening
  - ▶ Riparian
  - ▶ Other



# Conceptual Alternatives

- ▶ Alternative Analyses
  - ▶ Public Input on Concepts
  - ▶ Combination of Concepts
  - ▶ Flood events – 25, 50, 100 year
  - ▶ Benefits vs Costs



# Breakout group discussions and input

Please share your ideas and thoughts by discussing and answering the following questions with your group:

1. What do you currently value about Penitencia Creek and the surrounding area? What needs to be preserved?
2. Thinking about the conceptual alternatives that were presented:
  - A. What are the elements that you liked?
  - B. What are the elements that you did not like?
3. Are there other elements or alternatives that were missed or should be considered for the project?

## **FACEBOOK AUDIENCE:**

**Please send your input to Jose Villarreal at [jvillarreal@valleywater.org](mailto:jvillarreal@valleywater.org).**



# Next Steps: Timeline

- ▶ Write-up from each group: by Oct. 12
- ▶ Next public meeting: Winter 2018/19
- ▶ Recommended Alternatives: Spring 2019
- ▶ Planning Study Report: Summer 2019



# For more information

Gabriel Vallin

[gvallin@valleywater.org](mailto:gvallin@valleywater.org)

408-630-2790

Jose Villarreal

[jvillarreal@valleywater.org](mailto:jvillarreal@valleywater.org)

408-630-2879

<https://valleywater.org/upper-penitencia-creek>

- Signup to receive project updates via email
- View project reports, maps, history, and other information



Thank you for questions,  
suggestions and time.